

# Health Partners

A quarterly publication of Coffeyville Regional Medical Center

2022



## Shravan Gangula, MD

Medical Director of CRMC Primary Care Clinic  
and the Montgomery County Health Department

### *Special Edition:*

- Complete CRMC Service Guide
- CRMC Foundation Update
- Physicians Listing and More



Compliments of:

**Coffeyville Regional  
Medical Center**

[www.crmcinc.org](http://www.crmcinc.org)



Dear Friends,

Communities and residents from southeast Kansas and northeast Oklahoma choose Coffeyville Regional Medical Center for their healthcare needs because they trust our CRMC family to care for theirs. Our

healthcare system offers many of the same services and medical technology found in larger cities, so there is no need to travel far from home to experience exceptional care.

So, what sets us apart? It's our people - and knowing that our mission is to serve every generation with patient-centered, compassionate care. Many of our associates and physicians have been in the area and involved in our communities for many years. And that means a great deal when you or a loved one needs medical care. Here, you are not just a number, you are our friends, neighbors, and family.

This special edition of Health Partners magazine is designed to re-acquaint you with CRMC. Our hospital has changed a great deal over the years - from being a small community hospital to now being a regional healthcare system with high quality, technologically advanced medical services, and equipment.

I would like to personally thank all of you for the outpouring of support for our healthcare professionals during the past two years of this pandemic. You keep our team's spirits high and are a constant reminder of why we are here.

I sincerely wish you all a healthy and happy 2022.

**Brian Lawrence, MHA**  
President / Chief Executive Officer

## CRMC QUICK FACTS

Annual Admissions: Nearly 2,500

Births: 300 | Surgeries: 3,000

ER Visits: Nearly 10,000

Home Health Visits: Nearly 8,000

## TABLE OF CONTENTS

Emergency Services.....	3
EMS & SANE SART.....	3
Cancer Treatment Services.....	4
Women's Health Services.....	5
Surgical Services.....	6
Neurosurgery.....	6
Orthopedic Services.....	7
Urology.....	7
CRMC Medical Groups.....	8
Medical Imaging Services.....	9
Business & Industry.....	10
Inpatient Services.....	11
Patients & Visitors.....	11
Hospitalists & Transitional Care.....	11
Quality Department.....	11
Home Health.....	12
Rehabilitation Services.....	12
Outpatient Services.....	12
Laboratory Services.....	13
Website and Health Hub.....	13
CRMC Foundation.....	14
Providers by Specialty.....	15

Coffeyville Regional Medical Center is a 501(c)3 municipal, non-profit hospital licensed for 47 beds. On an annual basis, we serve over 45,000 patients from Montgomery, Chautauqua, Labette, Allen, Neosho, and Wilson counties in Kansas, as well as Nowata, and Craig counties from Oklahoma. Established in 1949, CRMC has grown over the years and expanded its facilities and technology to stay current with today's world.

### Get Health Partners Delivered to Your Home

To receive a free copy of Health Partners in your home each quarter, please go to [www.crmcinc.org](http://www.crmcinc.org) -- Click on Quick Links -- Choose Newsletter Sign Up. You must fill out the address information to guarantee a copy of the newsletter will be sent to your mailbox.

Information in Health Partners is provided for informational purposes and not intended to replace the advice of your physician. If you have concerns or questions about specific content that may affect your health, please contact your healthcare provider.

### Coffeyville Regional Medical Center

Main Number: 620-251-1200

Toll Free: 800-540-2762



# CRMC SERVICE DIRECTORY

## EMERGENCY SERVICES

We recognize the impact of seeing an experienced ER team, led by an Emergency Medicine physician, can mean to the health of our community. That's why Coffeyville Regional Medical Center is committed to providing the region with the only Emergency Room staffed 24/7 with Emergency Medicine Physicians. Our physicians are Board Certified or Board Eligible in Emergency Medicine – and that means experienced care for you.

### What is an Emergency Medicine Physician?

Emergency Medicine Physicians are specialized and certified in the discipline of Emergency Medicine. A physician who specializes in Emergency Medicine focuses on the immediate decision-making and actions necessary to prevent death or any further disability both in the pre-hospital setting by directing emergency medical technicians and in the emergency department. This specialist provides immediate recognition, evaluation, care, stabilization and disposition of a generally diversified population of adult and pediatric patients in response to acute illness and injury.



**Landon Vinson, MD**  
Emergency Medicine

### Why Emergency Medicine Physicians Are So Important

Life and death situations are a regular occurrence in an emergency room. Emergency Medicine Physicians are trained in the medical specialty of the diagnosis and treatment of unforeseen injury or illness.

***You Have A Choice | You may request any ambulance service to take you to CRMC. You also have the right to request to be brought to CRMC if you are offered any type of shuttle service from any provider.***

## EMS SERVICES

In an emergency, many times it is the Emergency Medical Services (EMS) responders who transport the patient to the hospital and provide preliminary treatment before arrival. During transport, they are in close communication with the Emergency Department personnel, receiving instructions and providing patient disposition on the way.

CRMC EMS covers the southeastern corner of Montgomery County, the southwestern corner of Labette County and the Northeast corner of Nowata County in Oklahoma.

CRMC EMS is a hospital-based service that provides assistance within the hospital and serves on hospital committees and disaster preparedness committees within the region. It is unique because most EMS services are fire-based, city-based, or private.

### Technology

CRMC has four ambulances equipped with state-of-the-art equipment. Each has 12-lead cardiac monitors and portable ventilators for adults, pediatric patients or infants. In addition they have specialized equipment for certain types of respiratory problems, which can help prevent the patient from being on a ventilator, and provide a better patient outcome.

## SANE/SART

### Providing Care to Adolescent and Adult Victims of Sexual Assault

CRMC is dedicated to providing immediate compassionate, and culturally sensitive care to all victims of sexual assault.

**SANE – The SANE is a Sexual Assault Nurse Examiner**  
**SART - The SART is a Sexual Assault Response Team**

CRMC staff work closely with law enforcement officers to best care for victims. CRMC will be able to meet the needs of sexual assault victims in providing treatment as well as collecting valuable evidence that may help prosecute their abuser.

**AVAILABLE 24 HOURS A DAY - 7 DAYS A WEEK THROUGH THE EMERGENCY DEPARTMENT AT CRMC.**

## Medical Oncology, Radiation Oncology, and Hope Under One Roof | **ONLY AT CRMC**

At Coffeyville Regional Medical Center, area residents will find the advanced technology needed to fight cancer and the compassion to provide hope to patients and their families.

We are fortunate in rural southeast Kansas to have a cancer treatment program that includes medical oncology as well as radiation oncology and surgical services, all under one roof at Coffeyville Regional Medical Center. However, not all cancer treatment programs are alike. At CRMC we are different, combining the best technology in state-of-the-art treatment with a human element of compassion and caring.

### **Tatman Cancer Center**

Patients at the Tatman Cancer Center receive the same advanced treatment available at larger facilities: Chemotherapy, IV Therapy, Hormonal Therapy and Blood Component Transfusion. The oncologist utilizes the American Society of Clinical Oncology (ASCO) or the National Comprehensive Cancer Network (NCCN) guidelines for selection of cancer treatment. The Tatman Cancer Center works closely with other state-of-the-art centers such as MD Anderson to provide the actual chemotherapy treatment plan so that patients can be treated close to home.

### **Jerry Marquette Radiation Oncology Center**

The Jerry Marquette Radiation Oncology Center offers state-of-the-art patient care with a new facility that opened late in 2011. Located adjacent to the Medical Imaging and Surgery areas off of Fourth Street, it allows both outpatients and inpatients the convenience of having diagnostic work and treatment done in the same area. A state-of-the-art linear accelerator, along with other advanced equipment is also part of the facility, providing patients the most up-to-date treatment available.

### **A Team Approach to Cancer Treatment**

A committee consisting of a multidisciplinary group of physicians and non-physician representatives—from administration, cancer registry, quality improvement, medical oncology, nursing, radiation oncology, pharmacy, education, and nutrition meets quarterly. It is responsible to oversee the cancer program, to ensure full compliance with all the standards set by the American College of Surgeons, and for planning, initiating and evaluating cancer care at Coffeyville Regional Medical Center.

The major focus of this Cancer Committee is quality patient care. In addition, it addresses support areas, including pain management and nutrition for patients with cancer.



Nathan Uy, MD and Akinola Ogundipe, MD

### **Treatment Plans from Anywhere Delivered Close to Home**

| We welcome our patients to check all their options. Many common cancers have a standard treatment plan from one facility to the next. However, when a cancer is rare, patients are generally referred to a larger cancer center. As an example, a patient chooses to work with MD Anderson, which requires the need to travel. It can be difficult to travel and be in unfamiliar surroundings when undergoing treatment. However, once the patient has a treatment plan, or prescription, in most cases it can be filled at Coffeyville Regional Medical Center and the treatments can be performed at home, eliminating the need to travel.

**Tatman Cancer Center | 620-252-1606**

**Jerry Marquette Radiation Oncology | 620-252-1563**

To learn more  
about our services  
visit our website!  
[www.crmcinc.org](http://www.crmcinc.org)





# WOMEN'S HEALTH SERVICES

LEARN MORE  
[www.crmcinc.org](http://www.crmcinc.org)



CRMC's Geeta Sandhu Women's Health Unit cares for women through all stages of life. The physicians, nurses and staff are dedicated to giving patients and their families the best experience possible whether experiencing the joys of a newborn baby or helping them recover from a hysterectomy.



## Geeta Sandhu Women's Health Unit

The Women's Health Unit allows patients to labor, deliver and recover in the same room. Patients also have whirlpool tubs available to use during labor to help relieve their pain. A dedicated surgical suite is available in the Geeta Sandhu Women's Health Unit for planned or emergency cesarean sections.

With a combined experience of over 195 years, the nursing staff strives to develop a personal relationship with each patient during their time together. The staff are experienced in calming patients and assisting them through the joys and trials of labor and delivery.

"The Women's Health Unit staff puts their patients first," said Jennifer Wintjen, RN. "The staff care about their patient's pain and try to make them comfortable. The whirlpool tubs offer great heat therapy for relaxing muscles during labor and our anesthesia team is readily available for epidurals."

Security is of the utmost importance and all infants have security bracelets that match their parents. Infants also receive a security ankle bracelet shortly after birth that will sound an alarm if the baby were removed from the locked department. New mothers can expect support and training prior to and after the birth of their child.

CRMC offers free childbirth education classes to help parents prepare for the birth of their child. The class includes education on the stages of labor, breastfeeding, postpartum, infant care and also includes a tour of the Women's Health Unit.

CRMC recognizes that fathers are an important part of the delivery process! That's why each room has a sofa sleeper for their comfort.



Oh baby! A new kind of pregnancy and birthing experience! Whether you are in the immediate planning stages for your family, or looking to the future – when it comes to having a baby – Nobody delivers like CRMC.

Oh Baby! You're going to like it! Our Oh Baby! program enhances the experience of having your baby, with access to a multitude of services and practical gifts that center on pregnancy, birth, and wellness for both baby and mom.

Some of the amenities include Oh Baby! gifts. Your baby will receive a darling sleep gown, and you will receive a nice diaper bag, along with a WHO (World Health Organization) approved breastfeeding bag. Also, CRMC posts free baby announcements on Facebook #BornAtCRMC.



*If you have any questions about any of the classes or about the Women's Health Department feel free to contact Jennifer at 620-252-1589 or email her at [jwintjen@crmccinc.org](mailto:jwintjen@crmccinc.org)*

**Jennifer Wintjen, RN**  
Women's Health Director

# CRMC MEDICAL GROUP SPECIALTY CLINIC



**Aaron Russell**  
General Surgery

**Michelle McGuirk, MD**  
General Surgery

## SURGICAL SERVICES

Our Joint Commission-accredited center uses the latest state-of-the-art equipment in all of our operating rooms and recovery suites. Our surgery department offers an individualized plan of care and creates an environment centered on your comfort and recovery.

Our multi-specialty surgery department means that you can have surgery and recover close to home.

### Surgical Specialties Offered:

- General surgery
- Gynecology/Obstetrics
- Ear, nose and throat
- Gastroenterology
- Neurosurgery
- Ophthalmology (Eyes)
- Orthopedic
- Pain management
- Podiatry
- Urology



**Gery Hsu, MD**  
Neurosurgery

## NEUROSURGERY SERVICES

Neurosurgery is the medical specialty of prevention, diagnosis, surgical intervention, and rehabilitation of disorders specific to the brain, spine, spinal cord, and nerve roots. The spine encompasses and protects the spinal cord. Spinal surgery is usually indicated for stabilization or to eliminate arm, leg, or low back pain.

### Microsurgery

Microsurgery is an operating technique that involves a small surgical incision of 1-1.5 inches or less. The benefits of microsurgery include shorter hospital stays, faster recovery times, and immediate results. Gery Hsu, MD, specializes in microsurgery.

### Kyphoplasty

Kyphoplasty is a minimally invasive procedure that repairs spinal fractures with bone cement. The benefits of kyphoplasty include minimal recovery time and improvement in mobility.

### Lumbar Fusion

A lumbar fusion is intended to stabilize a problematic area of the spine. Over time, this stability provides a reduction in pain for those suffering from mechanical issues of the low back.

**SPECIALTY CLINIC NUMBER: 620-252-1639**

To learn more about our  
services visit our website!  
[www.crmcinc.org](http://www.crmcinc.org)





## UROLOGY SERVICES

Dr. Bernard Howerter takes a personalized approach to care and will work closely with you to provide the best, most effective treatment.

**Urologists diagnose and treat the following conditions:**

- Problems with urination and incontinence
- Pain or discomfort
- Tumors or stones in the urinary system
- Impotence
- Urinary Tract Infection
- Kidney Stones
- Overactive Bladder
- Bladder or Kidney Cancer
- Benign Prostatic Hyperplasia
- Bladder Neck Obstruction
- Interstitial Cystitis
- Hypotestosteronemia



**Bernard Howerter, MD | Urology**

Dr. Howerter has been treating patients in our community for over 46 years.



**Sunil Menon, MD**  
**Orthopedic Surgeon**

## ORTHOPEDIC SERVICES

When nonsurgical interventions are no longer helping to alleviate your pain - such as medication and physical therapy - then it may be time for hip, knee, or shoulder replacement. Other signs may be aching in the joint, followed by periods of relative relief; pain after extensive use; loss of mobility; joint stiffness after periods of inactivity or rest; and/or pain that seems to increase in humid weather.

### Joint Camp at CRMC

We understand that a decision to have joint replacement surgery is made with care. Our orthopedic team is there to assist you and your family on your journey towards a better life. We strive to provide excellent care, to exceed your expectations, and we want you to achieve a full recovery so you can get back to your life as quickly as possible. This will be accomplished as you and your orthopedic team members (nurses, physician, and therapists) work together.

### Rehabilitation - An Integral Part of Your Joint Replacement

Physical Therapy provides a very important role in the final phase of a patient's recuperation from joint replacement. The physical therapist is licensed to provide therapy for the entire body. According to Darci Berry, DPT, Director of Rehabilitation Services, inpatients are seen for therapy while they are here recovering.

## ANESTHESIA TEAM

If you are anticipating a surgery or procedure, you expect to receive an anesthetic to prevent pain during the surgery. We are fortunate today that we have sophisticated surgical departments that can minimize pain and anxiety associated with surgery. These surgeries wouldn't be possible, however, without Anesthesiologists and Certified Registered Nurse Anesthetists (CRNA's).



**Baba Abudu, MD**



**Christopher Hogan, CRNA**



**Julie Moses, CRNA**

# CRMC MEDICAL GROUP PRIMARY CARE & WOMEN'S HEALTH



**Shravan Gangula, MD**  
Primary Care



**Perry Lin, MD**  
Woman's Health



**Stephen Miller, DO**  
Woman's Health



**Ann Taylor, DO**  
Primary Care



**Judy Carpenter, APRN**  
Woman's Health



**Allison Littleford**  
Primary Care



**Barabara McCartney, APRN**  
Primary Care



**Heather Pollet, APRN**  
Primary Care

## CRMC MEDICAL GROUP LOCATIONS

CRMC Medical Group is located in three convenient locations to better suit our patient needs. Area residents choose CRMC Medical Group because they know and trust our CRMC family caring for theirs.

CRMC Medical Group is committed to providing comprehensive medical care through all stages of life. Our physicians and providers are here to provide a foundation for you and your family's care in the areas of family medicine, internal medicine, pediatrics, obstetrics & gynecology, and specialty care in the areas of orthopedics, general surgery, neurosurgery, and urology. Our clinics are located in Coffeyville and Independence.

### Primary Care Clinic

1400 W. 4th Street, North Entrance,  
Suite 100 CRMC Campus  
Coffeyville, KS 67337  
620-688-6566

#### Hours:

Monday - Friday 8:00am - 8:00pm  
Saturday - 8:00am - 12:00pm

### Women's Health Clinic

1400 W. 4th Street, North Entrance,  
Suite 100 CRMC Campus  
Coffeyville, KS 67337  
620-251-0777

#### Hours:

Monday - Friday 8:00am - 5:00pm

### Independence Clinic

122 W. Myrtle  
Independence, KS 67301  
620-577-4062

#### Hours:

Monday - Friday 8:00am - 5:00pm





***Pictured with Dr. David Gutschenritter, MD:  
The new Siemens Altea 1.5 MRI System***



## MEDICAL

## IMAGING SERVICES

**David Gutschenritter, MD**  
Interventional Radiologist

**At Coffeyville Regional Medical Center, we provide our patients with the highest quality healthcare. With Radiologists and state-of-the-art equipment at CRMC, patients receive high quality medical imaging that is comparable to any major metropolitan area without having to travel far from home.**

At CRMC, we have one of the most rapid turnaround times in our area, with our radiologist providing the following:

- Next day reports, except mammo
- Medical Imaging procedures are read by radiologists.
- Sub-specialty reads provided by fellowship trained radiologists

### **INTERVENTIONAL RADIOLOGY PROCEDURES:**

- Biopsy
- Pain treatment
- Central venous access
- Abscess drainage
- Nephrostomy tube
- Cholecystostomy tube
- Liver & renal tumor treatment
- Chronic pain control
- Cancer pain control
- Feeding tubes
- Kyphoplasty
- Chest tube placement
- Limited vascular work

### **SERVICES OFFERED:**

- Digital radiography
- 3D digital mammography
- Ultrasound
- CT scan
- MRI
- Fluoroscopy

### **NUCLEAR MEDICINE**

Nuclear medicine uses very small amounts of radioactive material to diagnose and sometimes treat disease.

- Heart studies
- Bone scans
- Gallbladder functions

### **POSITRON EMISSION TOPOGRAPHY (PET/CT Scan)**

A PET scan is a non-invasive test that accurately images the cellular functions of the human body. A combination of CT and PET are used in detecting cancer.

### **WOMEN'S IMAGING**

Comprehensive women's imaging with:

- 3D digital mammography
- Breast ultrasound
- Breast biopsy
- Assist with surgical procedures

### **PAIN MANAGEMENT PROCEDURES**

- Epidural steroid injection
- Intraarticular Joint or Medial Branch Block
- Therapeutic Joint and Bursa Injections
- Tendons, Ligaments, and Muscle Injections
- Radiofrequency Ablation/ Destruction of Facet Joint

**To learn more about our  
services visit our website!**  
[www.crmcinc.org](http://www.crmcinc.org)





Coffeyville Regional Medical Center Workplace Wellness Services teach employees to make healthy choices that help prevent chronic disease. Through Workplace Wellness initiatives, employers can improve the health and productivity of their employees and save on health insurance.

Research shows that Workplace Wellness Services work. According to a comprehensive review of research studies, work site health promotion programs can lead to reductions of more than 25% in absenteeism, healthcare costs and disability/Worker's Compensation costs.

We consult privately with employees about their individual assessment results, provide referral to physicians and make appointments. We share only aggregate data with the employer. This means you don't have to worry about violating OSHA or HIPAA privacy regulations by initiating a wellness program and screening process for your employees.

## CONTACT INFORMATION

### Lindsay Howerton, LPN

Supervisor of Business and Industry,  
Associate/ Occupational Health  
(620)252-2277  
lhowerton@crmcinc.org

## PHYSICAL EXAM

- Post-Offer Exams and Pre-Placement Exams
- Annual Exams
- PCP (Physical Capacity Profile)
- DOT Exams
- Biometric Screenings
- Musculoskeletal/Neck/Back Evaluations

## WORKER'S COMP SERVICES & THERAPY

- Injury Management and Follow-Up Care
- Injury Prevention Training
- Break-Time Fitness
- Ergonomic/Job Site Analysis
- Transitional/Modified Work Programs
- Acute Rehabilitation

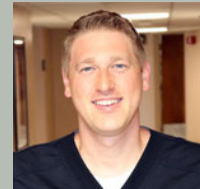
## ALCOHOL & DRUG SCREENING

- Non-DOT Screens
- Instant Drug Screens (6 & 10 Panel)
- Hair Analysis Screening
- DOT Drug Screens
- DOT and Non-DOT Breath Alcohol Testing
- Collection Site for LabCorp, Quest, Psychomedics, CRL and Alere

## ALL OTHER SERVICES

- EKG
- Pulmonary Function Test
- Digital Mammography
- Blood Work
- TB Skin Testing and Reading
- Vision Screenings
- Blood Pressure Evaluation
- Cholesterol Evaluation
- Diabetes Evaluation
- Weight Evaluation (BMI/Waist Circumference)
- Immunizations
- First Aid & CPR Training
- Nutritional Education/Referrals
- Health Education
- Health Risk Assessments
- Physician Referral Services
- Respirator Fit Testing
- Contract Nursing
- Audiogram (CAOHC Certified)
- Hand Nerve Conduction Study
- Spirometry (NIOSH Certified)

## MEET OUR SPECIALISTS



**Chad McCready PA-C**  
(DOT Certified)



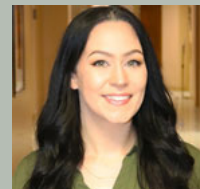
**Lindsay Howerton, LPN**  
Business & Industry  
Supervisor &  
Employee Health Nurse



**Trish Rinehart**  
RMC, C.P.C./B.A.T  
NIOSH Certified  
CAOHC Certified  
PCP Trained Specialist



**Erika Hite, M.A.**  
Medical Assistant  
NIOSH Certified  
CAOHC Certified  
PCP Trained



**Margaret Golden**  
Department Coordinator



**Learn more about  
our Services!**



## CRMC INPATIENT SERVICES

Being in the hospital can be a scary time in someone's life, but at Coffeyville Regional Medical Center, you don't need to worry. Our acute care facility treats patients with the necessary treatment for disease, injury, illness or recovering from surgery. Acute care has specialized personnel using complex, sophisticated equipment and materials, which may include intensive or emergency care.

### Acute Care Services

Acute care is for short-term hospital stays usually lasting between one to three days depending on how the patient responds to their treatments. The unit's function is to provide high-quality care that will promote the physical, mental and spiritual health of the patient and their family. Patients admitted to the unit can be any age and here for any reason deemed appropriate for hospital treatment.

### Intensive Care Unit (ICU)

ICU provides an intensive level of monitoring and specialized care to our critically ill and injured patients. Our goal is to provide high quality, patient centered care. We offer a 7-bed, private room, unit. Our ICU physicians and nurses have extensive, specialized training and clinical experience. We work closely with surgeons, cardiologists, anesthesiologists, physicians and ancillary services to provide patient specific care. We offer both pediatric and adult care services

### HOSPITALISTS

A hospitalist is a physician that specifically cares for patients in the hospital. Most hospitalists are board-certified internists (internal medicine) who have gone through the same training as other internal medicine physicians, including medical school, residency training and board-certification examination. The difference is that hospitalists have chosen not to practice internal medicine in a clinic setting. Some hospitalists are family practice physicians or medical sub specialists who chose to do hospitalist work.

### On Acute Care

When you are admitted to Coffeyville Regional Medical Center your care is provided by a hospitalist while you are an inpatient. The Hospitalist consults with your doctor, maintaining a regular communication with him or her during your stay and receives valuable information about your medical history, medications and special needs.

### PATIENTS AND VISITORS

#### Payment and Financial Assistance:

CRMC accepts cash, check, and major credit cards. For assistance with payment arrangements or for more information regarding CRMC Financial Assistance Program, please call 620-252-1549.

### Insurance:

To help patients meet their financial obligations, CRMC files an insurance claim as a courtesy to patients. To do this, patients must present accurate and complete insurance information at the time of registration. The hospital is responsible for submitting bills to your insurance company and will do everything possible to expedite the claim. Please remember that your policy is a contract between you and your insurance company and that you have the final responsibility for payment of your hospital bill.

### Patient Portal View Your Medical Records Online

Coffeyville Regional Medical Center's Patient Portal allows you to access your health information and other resources on your time and between visits. If you are an inpatient, you will be asked if you want access to the patient portal. Please provide a valid email number to have a staff member enroll you. Once you have been enrolled and have questions about the patient portal you can call, Health Information at 620-252-1152.

### QUALITY

How's your stay? Are you getting the care you need? Are your doctors and nurses listening and responding to your questions or requests? Our goal is to provide the best quality care. To do so, we ask for feedback from patients like you.

### During Your Stay

Please speak with your nurse or nursing supervisor if you have any questions or concerns about your care. We make every effort to address your concerns. If you need further assistance please contact the Quality Improvement Department at 620-252-2205.

### After Your Stay

Once you leave our care, we may ask you to take the Hospital Consumer Assessment of Healthcare Providers and Systems (HCAHPS) survey. This survey is a tool to measure and report patient satisfaction.

### TRANSITIONAL CARE

Transitional care is designed to help patients once they have been discharged from a hospital stay. CRMC Medical Group - Primary Care Clinic wants to continue giving you the care you deserve once you have been discharged from a hospital. Even if you are not established with our practice, we are accepting NEW transitional care patients.

### HEALTH INFORMATION

If you are needing to pick up medical records, you will find the Health Information Desk located in the Main Entrance/Lobby at Coffeyville Regional Medical Center. You can either visit our website and print off an authorization form or visit one of our representatives during their office hours. Monday - Friday: 8:00am- 4:00pm

***If you have any questions on obtaining or requesting Medical Records, please call 620-252-1152.***

## CRMC OUTPATIENT SERVICES



### HOME HEALTH

Coffeyville Regional Medical Center Home Health can help you feel more in control of your health by involving you in more decisions. Benefits of CRMC Home Health include home visits by nurses, physical therapists, speech pathologists and/or home health aides. We also develop your own personal health record to help you manage your healthcare.

**Main Number: 620-688-6561**

**Hours: Monday - Friday, 8:00 a.m. - 4:30 p.m.**

### SERVICES PROVIDED

**Services provided by home health, based on assessed needs, may include**

- Home visits by nursing, physical therapy, occupational therapy and speech therapy

### YOU AND YOUR FAMILY MEMBER'S ROLE

- Be available for all scheduled home visits and telephone contacts
- To keep all scheduled doctor appointments
- Take ownership of your health management
- Become an informed and active participant in your healthcare
- Adapt healthy behaviors/lifestyle

### COFFEYVILLE REGIONAL MEDICAL CENTER'S ROLE

- Work with you and your family on goals that you and the agency have set
- Assist you with solving issues related to living with a chronic illness, including symptoms, treatment plans, lifestyle changes, etc.
- Provide educational materials and resources related to your healthcare needs and lifestyle
- Support you and help you build confidence in your ability to handle the day-to-day challenges of living with a chronic illness
- Development of your own personal health record to help you manage your healthcare

## REHABILITATION DEPARTMENT

The rehabilitation team consists of several professionals in a variety of disciplines working together in conjunction with your referring physician. Occupational and physical therapists work to provide individuals a path to enhanced living.

### Speech Therapy

Speech/language therapy is the treatment of individuals ranging from pediatrics to geriatrics with speech/language disorders. Speech/language pathologists typically treat problems in the areas of articulation; dysfluency; oral-motor, speech, and voice; and receptive and expressive language disorders.

### Aquatic Therapy

High pain levels, multiple sites for pain, weight bearing restrictions, post op conditions, low back pain and overall weakness are just a few diagnoses where aquatic therapy may be beneficial.

### Physical Therapy

Physical Therapy is a treatment that focuses on restoring an individual's activity, strength and mobility following an injury or surgery.

### Occupational Therapy

Occupational Therapy is treatment that focuses on helping individuals in achieving independence in all areas of their lives. In addition to dealing with an individual's physical well-being, occupational therapy addresses psychological, social, and environmental factors.

### Arthritis

The arthritis classes include low impact exercises, an educational module and relaxation/breathing techniques. The low-impact class is designed to help build endurance and improve movement. While the program is a fun, safe way for people with arthritis to stay fit, it should not replace treatment prescribed by a doctor or physical therapist. This program provides arthritis education and it can change someone's quality of life by decreasing pain.

### Cardiac Rehabilitation

The cardiopulmonary rehabilitation program at CRMC is designed to help individuals achieve an optimal level of physical, psychological, vocational and social health. Cardiac rehabilitation services are designed to help people with heart disease recover faster and return to full and productive lives. This is accomplished by the patient working closely with the cardiac rehab team.

**For more information about any of our rehabilitation services, call 620-252-1505.**





## LABORATORY SERVICES

We know that getting the best healthcare treatment requires a good diagnosis - and a lab test plays an important role in the upfront diagnostic work. That's why our Laboratory Services is here 24 hours a day, seven days a week to provide timely, quality lab testing and results to your doctor and healthcare team.

Our work is nationally accredited by the Joint Commission. This gives you added assurance that our medical laboratory is following the strictest standards for quality, accuracy, technical process and safety.

## Our Expert Staff

Our board certified pathologist is Dr. Paul Gelven. Coffeyville Regional Medical Center laboratory works with a team of professional, technical and support staff to produce thousands of lab test results each year.

## Surgical Pathology Services

CRMC's Surgical Pathology services meets national standards on cancer diagnosis with cytogenetics. Twice a month tumor conference/case discussions with Oncological and other specialties of physicians and discuss in detail with educational power point presentations about further patient management care so our patients can get the best treatment options. We offer clinical trials in association with Masonic Cancer Alliance. We do frozen sections to make on-site surgical diagnosis when patients are going through surgical procedures or undergoing radiological (CT/USG) intervention procedures. Our Pathology department is also accredited by the Joint Commission.



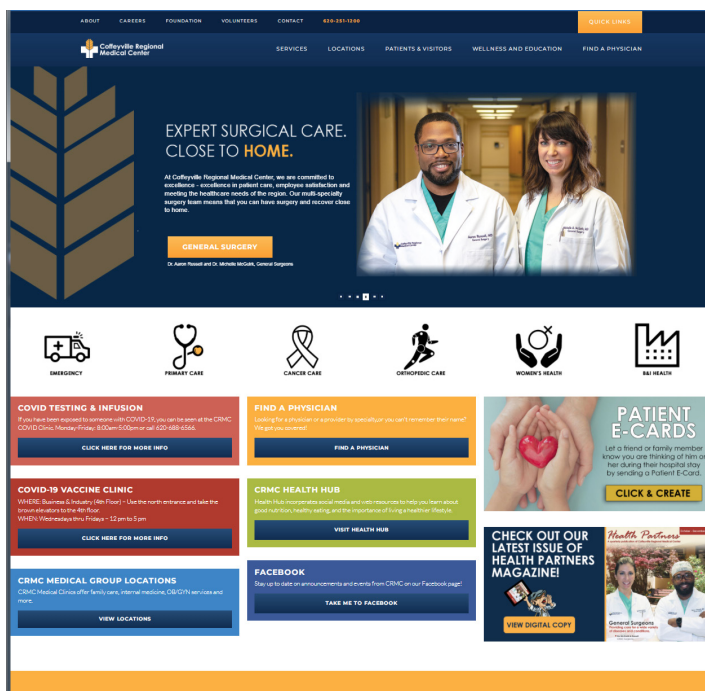
**Paul Gelven, MD**  
Pathology & Histology

### Lab Hours

M-F 7:00 am - 7:00 pm  
Sat. 8:00 am - 12:00 pm  
Sun. 1:00 pm - 5:00 pm

## CRMC WEBSITE

To get the latest about our services, physicians and everything else we offer, please visit our websites at [www.crmcinc.org](http://www.crmcinc.org)



## CRMC HEALTH HUB

We make your Health a priority! We encourage you to start incorporating healthy habits into your yearly, weekly and even daily routine. Whether you're trying to get more sleep, trying to be more active, or trying to stay up-to-date on routine health checkups and screenings, at CRMC we believe that healthy habits lead to a healthier you!

CRMC's Health Hub offers FREE downloadable resources to help you make education decisions about your health, nutrition and daily routine. Find recipes that are tailored to heart health or help finding a meal plan that helps keep your diabetes under control.

Join CRMC's dietitian Marsha Wingate every month to keep up-to-date on additional resources and tips to keep you at your best all year long.



Scan the QR code to visit our Health Hub webpage and start your path to getting healthier...today!



## CRMC FOUNDATION UPDATE



Each and every day we hear the stories of how our associates are making a difference in the lives of the families we serve. The CRMC Foundation inspires the community to engage in philanthropy and give back to the unique community care found at Coffeyville Regional Medical Center. Community support for the foundation reflects the trust and reliance generations of patients have had with us and ensures that we maintain focus on serving every generation with patient-centered, compassionate healthcare.

Rural healthcare funds improvements with three funding options: debt, the net profit generated by the hospital or philanthropy. The Foundation exists to fill the gap between what hospitals can afford to reinvest due to extremely tight margins and what they must purchase to continue to provide care. If the hospital has a 1% profit margin then it takes \$10,000 in billable hospital services to generate \$100 in profit. Philanthropy allows hospitals to react sooner to community needs and purchase necessary equipment, provide valuable training and look toward future building projects. As we look forward to 2022, we hope that you will join us in supporting CRMC and the community that we serve.

Sincerely,  
Lisa Kuehn

### Lisa Kuehn

Senior Director of Strategic  
Development & Philanthropy  
foundation@crmcinc.org  
620-252-1674



### How to donate to the CRMC Foundation

The generous spirit of our donors play a vital role in fulfilling our mission. Philanthropy enables CRMC to purchase state-of-the-art equipment and conduct community programs. It also enables the Foundation to offer scholarships to individuals seeking a career in healthcare. If you are passionate about helping CRMC, please contact Lisa Kuehn, Senior Director of Strategic Development and Philanthropy.



**WANT TO GIVE?**  
Visit [crmcinc.org](http://crmcinc.org)



## 2021 REVIEW

Purchased the house at 304 Wilkie. This space will be valuable for future employee parking for our campus.

The Foundation was able to send 17 individuals to a conference or for certification that would help them in their current job through the Wilson Associate Education Fund. This fund also granted two departments resource and training materials for department-wide education.

The Foundation was able to award \$10,500 in scholarships to those enrolled in medical degrees in 2021. Of that \$9,000 went to CRMC employees and \$1500 went to local graduating seniors with an interest in pursuing the medical profession.

The Foundation received a grant from the Patterson Family Foundation for Pandemic-Related Equipment and Supplies.

The Foundation hosted the 27th Annual Bill Read Golf Classic on October 16th. The four-person scramble had 26 teams participate. This event raised just over \$13,000.





# Physician & Provider

## Directory by Specialty

### CARDIOLOGY

#### **Anderson Mehrle, MD**

CRMC Outpatient Services  
(Located inside Tatman Cancer Center)  
1400 W. 4th Street, Coffeyville, KS 67337  
Call Bartlesville Office – 918-332-3600

#### **Amber Lopez, APRN**

CRMC Outpatient Services  
(Located inside Tatman Cancer Center)  
1400 W. 4th Street, Coffeyville, KS 67337  
Call Bartlesville Office – 918-332-3600

### EAR, NOSE & THROAT (ENT)

#### **Charles Holland Jr., MD**

205 SE Howard Ave, Bartlesville, OK 74006  
Office: 918-333-0474

### FAMILY/GENERAL MEDICINE

#### **James Christensen, DO**

Coffeyville Family Practice  
209 W. 7th, Coffeyville, KS 67337  
Office: 620-251-1100

#### **Shravan Gangula, MD**

CRMC Medical Group  
Primary Care Clinic - Coffeyville  
Office: 620-688-6566

#### **Allison Littleford, DNP**

CRMC Medical Group  
Primary Care Clinic - Coffeyville  
Office: 620-688-6566

#### **Barbara McCartney, APRN**

CRMC Medical Group  
Primary Care Clinic - Coffeyville  
Office: 620-688-6566

#### **Ann Taylor, DO**

CRMC Medical Group  
Primary Care Clinic - Coffeyville  
Office: 620-688-6566  
Independence Clinic  
620-577-4062

#### **Judy Carpenter, APRN**

CRMC Medical Group  
Primary Care Clinic - Coffeyville  
Office: 620-688-6566  
Independence Clinic  
620-577-4062

### GENERAL SURGERY

#### **Michelle McGuirk, MD**

CRMC Medical Group  
Specialty Clinic - Coffeyville  
Office: 620-252-1639

#### **Aaron Russell, MD**

CRMC Medical Group  
Specialty Clinic - Coffeyville  
Office: 620-252-1639

### NEPHROLOGY

#### **Joseph Meouchy, MD**

CRMC Outpatient Services/  
Tatman Cancer Center  
1400 W 4th Street, Coffeyville, KS 67337  
Office Number: Wichita Office – 316-263-5891

### NEUROSURGERY

#### **Gery Hsu, MD**

CRMC Medical Group  
Specialty Clinic  
1400 W 4th Street, Coffeyville, KS 67337  
Office Number: 620-252-1639

### OBSTETRICS & GYNECOLOGY

#### **James Christensen, DO**

Coffeyville Family Practice  
209 W. 7th, Coffeyville, KS 67337  
Office: 620-251-1100

#### **Stephen Miller, DO**

CRMC Medical Group  
Women's Health Clinic - Coffeyville  
Office: 620-251-0777  
Independence Clinic  
620-577-4062

#### **Perry Lin, MD**

CRMC Medical Group  
Women's Health Clinic - Coffeyville  
Office: 620-251-0777  
Independence Clinic  
620-577-4062

#### **Judy Carpenter, APRN**

CRMC Medical Group  
Independence Clinic  
Maternal & Infant Clinic  
Office: 620-577-4062

### ONCOLOGY

#### **Akinola Ogundipe, MD**

Oncology/Hematology  
CRMC Outpatient Services/Oncology/  
Tatman Cancer Center  
1400 W. 4th Street, Coffeyville, KS 67337  
Office: 620-252-1501

#### **Nathan Uy, MD**

Radiation Oncology  
CRMC Jerry Marquette Radiation Oncology  
1400 W. 4th Street, Coffeyville, KS 67337  
Office: 620-252-1563

### OPHTHALMOLOGY

#### **Garrick Rettele, MD**

Southeast Eye Care, LLC  
CRMC, 3rd Floor, Blue Elevators  
1400 W. 4th Street, Coffeyville, KS 67337  
Office: 620-251-3235

### ORTHOPEDICS

#### **Sunil Menon, MD**

CRMC Medical Group  
Specialty Clinic - Coffeyville  
Office: 620-252-1639

### PEDIATRICS

CRMC Medical Group  
Primary Care Clinic - Coffeyville  
Office: 620-688-6566  
Independence Clinic  
620-577-4062

### PODIATRY

#### **Jeffrey Hogge, DPM**

Family Podiatry  
209 N. 6th St, #102, Independence, KS 67301  
Office: 620-331-1840

#### **Barry Wesselowski, DPM**

Family Podiatry  
209 N. 6th St, #102, Independence, KS 67301  
Office: 620-331-1840

### UROLOGY

#### **Bernard Howerter, MD**

CRMC Medical Group  
Specialty Clinic - Coffeyville  
Office: 620-252-1639

## HOSPITAL BASED PHYSICIANS & PROVIDERS

### ANESTHESIOLOGY:

Baba Abudu, MD  
Chris Hogan, CRNA  
Julie Moses, CRNA

### HOSPITALIST :

Shravan Gangula, MD  
Brock Juffs, MD  
Tejawi Thippeswamy, MD

### PATHOLOGY:

Paul Gelven, MD

### RADIOLOGY:

David Gutschenritter, MD  
Dan Gillespie, MD

### EMERGENCY MEDICINE:

Russell Anderson, DO  
Michelle Bates, MD  
Taylor Blose, DO  
John Michael Carlson, DO  
John Henry Carson, MD  
Jerry Castleberry, DO  
James L. Christensen, DO  
Jeffrey Dixon, MD  
Francis Eaton, DO  
Sarah Fichuk, DO  
Will Goodrich, DO  
William Gray, MD  
Jesse Hatfield, MD  
James Hensel, DO  
Timothy D. Herrington, MD  
Terry Johannesen, MD  
Jeffrey Johnson, MD  
Craig Kennedy, MD  
Kevin Kierl, MD  
Derek Knotts, MD  
Brandon Koenigsknecht, MD  
Huy Luu, MD  
Joseph Meier, MD  
Matthew Millington, DO  
Kenneth E. Phillips, DO  
Riley Polk, MD  
Eric A. Reddick, MD  
Victoria Reynolds, DO  
Garrett Taylor, MD  
Landon Vinson, MD  
Alec Watson, MD  
Emily Williams, MD  
Eric Wooley, MD

Hospital Main Number: 620-251-1200  
Website: [www.crmcinc.org](http://www.crmcinc.org)

## CRMC MEDICAL GROUP LOCATIONS

### CRMC Medical Group

Primary Care Clinic  
1400 W. 4th Street  
Coffeyville, KS 67337  
(North Entrance)  
620-688-6566

### CRMC Medical Group

Specialty Clinic  
1400 W. 4th Street - 3rd Floor  
Coffeyville, KS 67337  
(Use Blue Elevators by ER)  
620-252-1639

### CRMC Medical Group

Women's Health Clinic  
1400 W. 4th Street  
Coffeyville, KS 67337  
(North Entrance)  
620-251-0777

### CRMC Medical Group

Independence Clinic  
122 W. Myrtle Street  
Independence, KS 67301  
620-577-4062

# Welcome Home

"My family and I are extremely happy to be back in Coffeyville. I look forward to reconnecting with the community and my patients."

It is my goal to provide patients with the most comprehensive care and return them to the lifestyle to which they are accustomed."

- Sunil Menon, MD

**Dr. Menon will begin  
seeing patients in April.**

**CRMC MEDICAL GROUP**  
Specialty Clinic  
1400 W. 4th Street  
Coffeyville, KS 67337

**(620) 252-1639**



*Sunil Menon, MD*  
Orthopedic Surgeon