

Community Health Needs Assessment

Montgomery County, KS

On Behalf of Coffeyville Regional Medical Center



October 2022

VVV Consultants LLC
Olathe, KS

Community Health Needs Assessment Table of Contents

I. Executive Summary

- a) Community Health Area of Future Focus (A prioritized description of future community unmet needs identified by community discussion)
- b) Town Hall CHNA Health Findings: Areas of Strengths and Areas to Change and/or Improve.

II. Methodology

- a) CHNA Scope and Purpose
- b) Local Collaborating CHNA Parties (The identity of any and all organizations in which the organization collaborated with and third parties that engaged to assist with the CHNA)
- c) CHNA and Town Hall Research Process (A description of the process & methods used to conduct the CHNA, a description of how the organization considered the input of persons representing the community, and an explanation of the process/ criteria used in prioritizing)
- d) Community Profile (A description of the community served by the facility and how the community was determined)

III. Community Health Status

- a) Historical Community Health Indicators Review - Secondary Data
- b) Current Community Health Status - Online Feedback Research

IV. Inventory of Existing County Health Resources

- a) CHNA Inventory of PSA Services and Providers (A description of the existing health care facilities and other resources within the community available to meet the needs identified through the CHNA)

V. Detail Exhibits

- a) Patient Origin & Access to Care
- b) Town Hall Attendees, Notes, and Feedback
- c) Public CHNA Notice / News
- d) Primary Research Detail

I. Executive Summary

[VVV Consultants LLC]

I. Executive Summary

Coffeyville Regional Medical Center – Montgomery County, KS - 2022 Community Health Needs Assessment (CHNA)

The previous CHNA for Montgomery County was completed in 2019. (Note: The Patient Protection and Affordable Care Act (ACA) require not-for-profit hospitals to conduct a CHNA every three years and adopt an implementation strategy to meet the needs identified by the CHNA). Wave #4 Montgomery County, KS CHNA assessment began in March of 2021 and was facilitated / created by VVV Consultants, LLC (Olathe, KS) staff under the direction of Vince Vandelaar, MBA.

Creating healthy communities requires a high level of mutual understanding and collaboration among community leaders. The development of this assessment brings together community health leaders and providers, along with the residents, to research and prioritize county health needs and document community health delivery success. This health assessment will serve as the foundation for community health improvement efforts for the next three years. **Important community CHNA Benefits** for both the local hospital and the health department, are as follows: 1.) Increases knowledge of community health needs and resources 2.) Creates common understanding of the priorities of the community's health needs 3.) Enhances relationships and mutual understanding between and among stakeholders 4.) Provides a basis upon which community stakeholders can make decisions about how they can contribute to improving the health of the community 5.) Provides rationale for current and potential funders to support efforts to improve the health of the community 6.) Creates opportunities for collaboration in delivery of services to the community and 7.) Provides guidance to the hospital and local health department for how they can align their services and community benefit programs to best meet needs, and 8.) fulfills Hospital "Mission" to deliver.

County Health Area of Future Focus on Unmet Needs

Area Stakeholder held a community conversation to review, discuss and prioritize health delivery. Below are two tables reflecting community views and findings:

2022 CHNA Priorities - Unmet Needs				
On Behalf of Coffeyville Regional Medical Center				
CHNA Wave #4 Town Hall - August 11, 2022				
Primary Service Area (12 Attendees / 44 Total Votes)				
#	Community Health Needs to Change and/or Improve	Votes	%	Accum
1	Childcare (Affordable / Choices / Availability)	8	18.2%	18%
2	Mental Health Stigma Preventing Service	8	18.2%	36%
3	Housing	8	18.2%	55%
4	Visiting Specialists(IM, Peds, Derm, OBGYN, Psych)	7	15.9%	70%
5	Suicide	7	15.9%	86%
Total Votes		80	100%	
Other needs receiving votes: Tobacco (Smoking / Vaping), Collaboration of Healthcare Delivery, Obesity (Nutrition / Exercise), Poverty / Lack of Income, Uninsured / Underinsured				

Town Hall CHNA Findings: Areas of Strengths

Montgomery Co KS - Community Health Strengths Recalled			
#	Topic	#	Topic
1	Prevention Services of Drugs and Alcohol	6	Having Specialty Providers
2	School Health	7	Veteran Support
3	Access to a Local Hospital with an ER Service	8	Available Provisions for Homeless and in need of Food
4	Access to Outdoor Activities	9	Community Collaboration
5	Population Density	10	Education

Key CHNA Wave #4 Secondary Research Conclusions found:

KANSAS HEALTH RANKINGS: According to the 2022 Robert Wood's Montgomery County Health Rankings, Montgomery County, KS Average was ranked 98th in Health Outcomes, 103rd in Health Factors, and 102nd in Physical Environmental Quality out of the 105 Counties.

TAB 1. Montgomery County's population is 31,156 (based on 2021), with a population percent change of -1.0%. About six percent (5.9%) of the population is under the age of 5, while the population that is over 65 years old is 20.3%. As of 2020, 3.7% of citizens speak a language other than English in their home. Children in single parent households make up a total of 23.4% compared to the rural norm of 18.6%, and 83.0% are living in the same house as one year ago.

TAB 2. In Montgomery County, the average per capita income is \$25,719 while 17.8% of the population is in poverty. The severe housing problem was recorded at 13.4% compared to the rural norm of 11.4%. Those with food insecurity in Montgomery County is 15.8%, and those having limited access to healthy foods (store) is 10.2%. Individuals recorded as having a long commute while driving alone is 18.7% compared to the norm of 24.0%.

TAB 3. Children eligible for a free or reduced-price lunch in Montgomery County is 66.7%. Roughly ninety percent (90.1%) of students graduated high school compared to the rural norm of 88.8%, and 20.2% have a bachelor's degree or higher.

TAB 4. The percent of births where prenatal care started in the first trimester is 76.3% and 9.0% of births in Montgomery County have a low birth weight. The percent of all births occurring to teens (15-19) is 9.4%.

TAB 5. The Montgomery County primary care service coverage ratio is 1 provider (county based officed physician who is a MD and/or DO) to 3,183 residents. There were 3,640 preventable hospital stays in 2019 compared to the Rural Norm of 4,143.

TAB 6. In Montgomery County, 20.2% of the Medicare population has depression. The average mentally unhealthy days last reported (2019) is 4.8 days in a one-week period, while the age-adjusted suicide mortality rate (per 100,000) is 21.7.

TAB 7a – 7b. Montgomery County has an obesity percentage of 41.0% and a physical inactivity percentage is 32.2%. The percentage of adults who smoke is 20.6%, while the excessive drinking percentage is 17.8%. The Medicare hypertension percentage is 59.8%, while their heart failure percentage is 14.1%. Those with chronic kidney disease amongst the Medicare population is 20.5% compared to the rural norm of 20.9%. The percentage of individuals who were recorded with COPD was 12.8%. Montgomery County recorded roughly three percent 3.3% of individuals who have had a stroke.

TAB 8. The adult uninsured rate for Montgomery County is 13.3% (based on 2019) compared to the rural norm of only 12.4%.

TAB 9. The life expectancy rate in Montgomery County is almost seventy-five years of age (74.9). Alcohol-impaired driving deaths for Montgomery County is 12.8% while age-adjusted Cancer Mortality rate per 100,000 is 156.4. The age-adjusted heart disease mortality rate per 100,000 is at 254.4.

TAB 10. A recorded sixty-four percent (64.2%) of Montgomery County has access to exercise opportunities. Those reported having diabetes is 11.4%. Continually, thirty-six percent (36.0%) of women in Montgomery County seek annual mammography screenings compared to the rural norm of 40.8%.

Key CHNA Wave #4 Primary Research Conclusions found:

Community Feedback from residents, community leaders and providers (N=89) provided the following community insights via an online perception survey:

- Using a Likert scale, average between Montgomery County stakeholders and residents that would rate the overall quality of healthcare delivery in their community as either Very Good or Good; is 71.9%.
- Montgomery County stakeholders are satisfied with some of the following services: Prevention Services of Drugs and Alcohol, School Health, Access to a Local Hospital with an ER Service, Access to Outdoor Activities, Population Density, Having Specialty Providers, Veteran Support, Available Provisions for Homeless and in Need of Food, Community Collaboration, and Education
- When considering past CHNA needs, the following topics came up as the most pressing: Childcare (Affordable / Choices / Availability), Mental Health Stigma Preventing Service, Housing, Visiting Specialists (IM, Peds, Derm, OB/GYN, Psych), and Suicide.

Montgomery Co KS - CHNA YR 2022					
Past CHNA Unmet Needs Identified		Ongoing Problem			Pressing
Rank	Ongoing Problem Area	Votes	%	Trend	Rank
1	Mental Health (Diagnosis, Treatment, Aftercare, Providers)	98	10.3%		1
2	Child Care	88	9.3%		2
3	Affordable Healthcare	76	8.0%		4
4	Drug / Substance Abuse	68	7.2%		3
5	Dental Care	62	6.5%		6
6	Housing (Safe & Affordable)	61	6.4%		5
7	Underinsured / Uninsured	53	5.6%		7
8	Preventative Health / Wellness	52	5.5%		8
9	Poverty	51	5.4%		11
10	Awareness of Healthcare Services	48	5.1%		12
11	Access to Specialists (DERM, Cancer, PULM, AUD)	43	4.5%		10
12	Food Insecurity	37	3.9%		15
13	Public Transportation	36	3.8%		16
14	"Owning Your Health" (Apathy)	35	3.7%		9
15	Health Education	32	3.4%		17
16	Economic Development	31	3.3%		14
17	Hollistic Care	30	3.2%		19
18	Collaboration of Healthcare Services	26	2.7%		13
19	Eye Care	21	2.2%		18
Totals		948	100.0%		

II. Methodology

[VVV Consultants LLC]

II. Methodology

a) CHNA Scope and Purpose

The federal Patient Protection and Affordable Care Act (ACA) requires that each registered 501(c)3 hospital conduct a Community Health Needs Assessment (CHNA) at least once every three years and adopt a strategy to meet community health needs. Any hospital that has filed a 990 is required to conduct a CHNA. IRS Notice 2011-52 was released in late fall of 2011 to give notice and request comments.

JOB #1: Meet/Report IRS 990 Required Documentation

1. A description of the community served by the facility and how the community was determined;
2. A description of the process and methods used to conduct the CHNA;
3. The identity of any and all organizations with which the organization collaborated and third parties that it engaged to assist with the CHNA;
4. A description of how the organization considered the input of persons representing the community (e.g., *through meetings, focus groups, interviews, etc.*), who those persons are, and their qualifications;
5. A prioritized description of all of the community needs identified by the CHNA and an explanation of the process and criteria used in prioritizing such needs; and
6. A description of the existing health care facilities and other resources within the community available to meet the needs identified through the CHNA.

Section 501(r) provides that a CHNA must take into account input from persons who represent the broad interests of the community served by the hospital facility, including individuals with special knowledge of or expertise in public health. Under the Notice, the persons consulted must also include: Government agencies with current information relevant to the health needs of the community and representatives or members in the community who are medically underserved, low-income, minority populations, and populations with chronic disease needs. In addition, a hospital organization may seek input from other individuals and organizations located in or serving the hospital facility's defined community (e.g., health care consumer advocates, academic experts, private businesses, health insurance and managed care organizations, etc.).

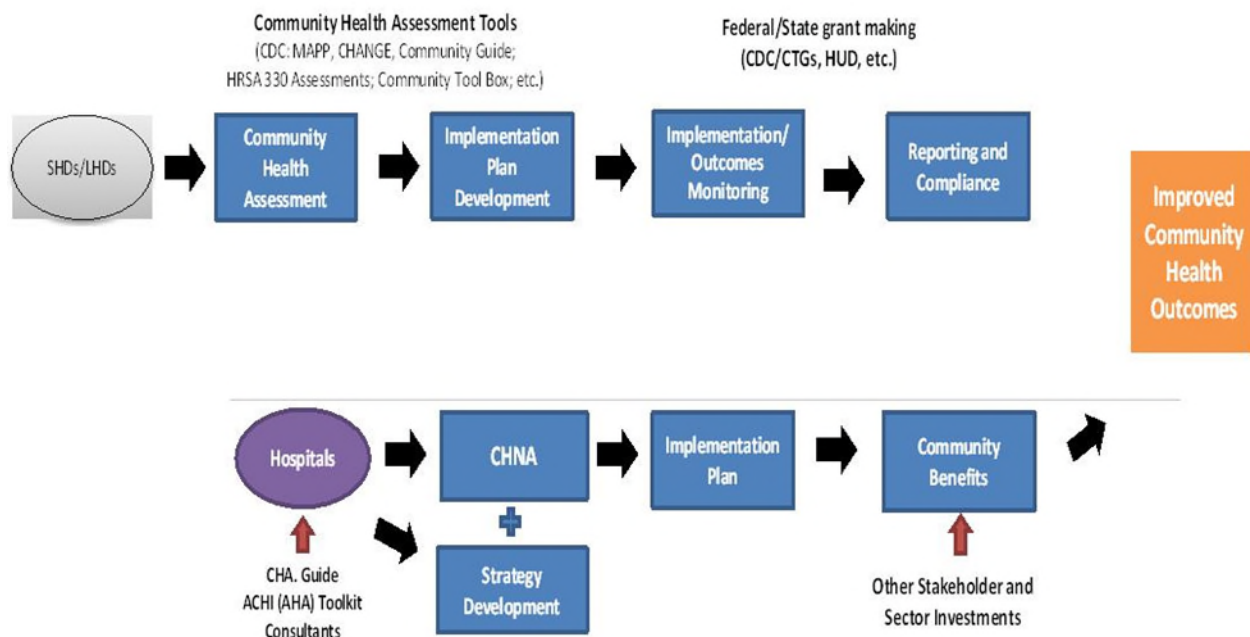
JOB #2: Making a CHNA Widely Available to the Public

The Notice provides that a CHNA will be considered to be "conducted" in the taxable year that the written report of the CHNA findings is made widely available to the public. The Notice also indicates that the IRS intends to pattern its rules for **making a CHNA "widely available to the public"** after the rules currently in effect for Form 990. Accordingly, an organization would make a **facility's written report** widely available by posting the final report on its website either in the form of (1) the report itself, in a readily accessible format or (2) a link to another organization's website, along with instructions for accessing the report on that website. *The Notice clarifies that an organization must post the CHNA for each facility until the date on which its subsequent CHNA for that facility is posted.*

JOB #3: Adopt an Implementation Strategy by Hospital

Section 501(r) requires a hospital organization to adopt an implementation strategy to meet the needs identified through each CHNA. The Notice defines an “implementation strategy” as a written plan that addresses each of the needs identified in a CHNA by either (1) describing how the facility plans to meet the health need or (2) identifying the health need as one that the facility does not intend to meet and explaining why the facility does not intend to meet it. A hospital organization may develop an implementation strategy in collaboration with other organizations, which must be identified in the implementation strategy. As with the CHNA, a hospital organization that operates multiple hospital facilities must have a separate written implementation strategy for each of its facilities.

Great emphasis has been given to work hand-in-hand with leaders from hospitals, the state health department and the local health department. A common approach has been adopted to create the CHNA, leading to aligned implementation plans and community reporting.



IRS Requirements Overview (Notice 2011-52)

Notice and Request for Comments Regarding the Community Health Needs Assessment Requirements for Tax-exempt Hospitals

Applicability of CHNA Requirements to “Hospital Organizations”

The CHNA requirements apply to “hospital organizations,” which are defined in Section 501(r) to include (1) organizations that operate one or more state-licensed hospital facilities, and (2) any other organization that the Treasury Secretary determines is providing hospital care as its principal function or basis for exemption.

How and When to Conduct a CHNA

Under Section 501(r), a hospital organization is required to conduct a CHNA for each of its hospital facilities once every three taxable years. ***The CHNA must take into account input from persons representing the community served by the hospital facility and must be made widely available to the public. The CHNA requirements are effective for taxable years beginning after March 23, 2012.*** As a result, a hospital organization with a June 30 fiscal year end must complete a CHNA full report every 3 years for each of its hospital facilities by fiscal June 30th.

Determining the Community Served

A CHNA must identify and assess the health needs of the **community served** by the hospital facility. Although the Notice suggests that geographic location should be the primary basis for defining the community served, it provides that the organization may also take into account the target populations served by the facility (e.g., children, women, or the aged) and/or the facility’s principal functions (e.g., specialty area or targeted disease). *A hospital organization, however, will not be permitted to define the community served in a way that would effectively circumvent the CHNA requirements (e.g., by excluding medically underserved populations, low-income persons, minority groups, or those with chronic disease needs).*

Persons Representing the Community Served

Section 501(r) provides that a CHNA must take into account input from **persons who represent the broad interests of the community** served by the hospital facility, including individuals with special knowledge of or expertise in public health. Under the Notice, the persons consulted must also include: (1) government agencies with current information relevant to the health needs of the community and (2) representatives or members of medically underserved, low-income, and minority populations, and populations with chronic disease needs, in the community. In addition, a hospital organization may seek input from other individuals and organizations located in or serving the hospital facility’s defined community (e.g., health care consumer advocates, academic experts, private businesses, health insurance and managed care organizations, etc.).

Required Documentation

The Notice provides that a hospital organization will be required to separately document the CHNA for each of its hospital facilities in a **written report** that includes the following information: 1) a description of the community served by the facility and how the community was determined; 2) a description of the process and methods used to conduct the CHNA; 3) the identity of any and all organizations with which the organization collaborated and third parties that it engaged to assist with the CHNA; 4) a description of how the organization considered the input of persons representing the community (e.g., through meetings, focus groups, interviews, etc.), who those persons are, and their qualifications; 5) a prioritized

description of all of the community needs identified by the CHNA and an explanation of the process and criteria used in prioritizing such needs; and 6) a description of the existing health care facilities and other resources within the community available to meet the needs identified through the CHNA.

Making a CHNA Widely Available to the Public

The Notice provides that a CHNA will be considered to be “**conducted**” in the taxable year that the written report of the CHNA findings is made **widely available to the public**. The Notice also indicates that the IRS intends to pattern its rules for making a CHNA “widely available to the public” after the rules currently in effect for Forms 990. *Accordingly, an organization would make a facility’s written report widely available by posting on its website either (1) the report itself, in a readily accessible format, or (2) a link to another organization’s website, along with instructions for accessing the report on that website. The Notice clarifies that an organization must post the CHNA for each facility until the date on which its subsequent CHNA for that facility is posted.*

How and When to Adopt an Implementation Strategy

Section 501(r) requires a hospital organization to adopt an implementation strategy to meet the needs identified through each CHNA. **The Notice defines an “implementation strategy” as a written plan that addresses each of the needs identified in a CHNA by either (1) describing how the facility plans to meet the health need, or (2) identifying the health need as one that the facility does not intend to meet and explaining why the facility does not intend to meet it.** A hospital organization may develop an implementation strategy in collaboration with other organizations, which must be identified in the implementation strategy. As with the CHNA, a hospital organization that operates multiple hospital facilities must have a separate written implementation strategy for each of its facilities.

Under the Notice, an implementation strategy is considered to be “**adopted**” on the date the strategy is approved by the organization’s board of directors or by a committee of the board or other parties legally authorized by the board to act on its behalf. Further, the formal adoption of the implementation strategy must occur by the end of the same taxable year in which the written report of the CHNA findings was made available to the public. For hospital organizations with a June 30 fiscal year end, that effectively means that the organization must complete and appropriately post its first CHNA no later than its fiscal year ending June 30, 2013, and formally adopt a related implementation strategy by the end of the same tax year. *This final requirement may come as a surprise to many charitable hospitals, considering Section 501(r) contains no deadline for the adoption of the implementation strategy.*

IRS Community Health Needs Assessment for Charitable Hospital Organizations - Section 501(c)(3) Last Reviewed or Updated: 21-Aug-2020

In addition to the general requirements for tax exemption under Section 501(c)(3) and Revenue Ruling 69-545, hospital organizations must meet the requirements imposed by Section 501(r) on a facility-by-facility basis in order to be treated as an organization described in Section 501(c)(3). These additional requirements are:

1. Community Health Needs Assessment (CHNA) - Section 501(r)(3),
2. Financial Assistance Policy and Emergency Medical Care Policy - Section 501(r)(4),
3. Limitation on Charges - Section 501(r)(5), and
4. Billing and Collections - Section 501(r)(6).

Medically underserved populations include populations experiencing health disparities or that are at risk of not receiving adequate medical care because of being uninsured or underinsured, or due to geographic, language, financial, or other barriers. Populations with language barriers include those with limited English proficiency. Medically underserved populations also include those living within a hospital facility’s service area but not receiving adequate medical care from the facility because of cost, transportation difficulties, stigma, or other barriers.

Additionally, in determining its patient populations for purposes of defining its community, a hospital facility must take into account all patients without regard to whether (or how much) they or their insurers pay for the care received or whether they are eligible for assistance under the hospital facility's financial assistance policy. If a hospital facility consists of multiple buildings that operate under a single state license and serve different geographic areas or populations, the community served by the hospital facility is the aggregate of these areas or populations.

Additional Sources of Input

In addition to soliciting input from the three required sources, a hospital facility may solicit and take into account input received from a broad range of persons located in or serving its community. This includes, but is not limited to:

- Health care consumers and consumer advocates
- Nonprofit and community-based organizations
- Academic experts
- Local government officials
- Local school districts
- Health care providers and community health centers
- Health insurance and managed care organizations,
- Private businesses, and
- Labor and workforce representatives.

Although a hospital facility is not required to solicit input from additional persons, it must take into account input received from any person in the form of written comments on the most recently conducted CHNA or most recently adopted implementation strategy.

Collaboration on CHNA Reports

A hospital facility is permitted to conduct its CHNA in collaboration with other organizations and facilities. This includes related and unrelated hospital organizations and facilities, for-profit and government hospitals, governmental departments, and nonprofit organizations.

In general, every hospital facility must document its CHNA in a separate CHNA report unless it adopts a joint CHNA report. However, if a hospital facility is collaborating with other facilities and organizations in conducting its CHNA, or if another organization has conducted a CHNA for all or part of the hospital facility's community, portions of a hospital facility's CHNA report may be substantively identical to portions of the CHNA reports of a collaborating hospital facility or other organization conducting a CHNA, if appropriate under the facts and circumstances.

If two hospital facilities with overlapping, but not identical, communities collaborate in conducting a CHNA, the portions of each hospital facility's CHNA report relevant to the shared areas of their communities might be identical. So, hospital facilities with different communities, including general and specialized hospitals, may collaborate and adopt substantively identical CHNA reports to the extent appropriate. However, the CHNA reports of collaborating hospital facilities should differ to reflect any material differences in the communities served by those hospital facilities. Additionally, if a governmental public health department has conducted a CHNA for all or part of a hospital facility's community, portions of the hospital facility's CHNA report may be substantively identical to those portions of the health department's CHNA report that address the hospital facility's community.

Collaborating hospital facilities may produce a joint CHNA report as long as all of the collaborating hospital facilities define their community to be the same and the joint CHNA report contains all of the same basic information that separate CHNA reports must contain. Additionally, the joint CHNA report must be clearly identified as applying to the hospital facility.

Joint Implementation Strategies

As with the CHNA report, a hospital facility may develop an implementation strategy in collaboration with other hospital facilities or other organizations. This includes but is not limited to related and unrelated hospital organizations and facilities, for-profit and government hospitals, governmental departments, and nonprofit organizations. In general, a hospital facility that collaborates with other facilities or organizations

in developing its implementation strategy must still document its implementation strategy in a separate written plan that is tailored to the particular hospital facility, taking into account its specific resources. However, a hospital facility that adopts a joint CHNA report may also adopt a joint implementation strategy. With respect to each significant health need identified through the joint CHNA, the joint implementation strategy must either describes how one or more of the collaborating facilities or organizations plan to address the health need or identify the health need as one the collaborating facilities or organizations do not intend to address. It must also explain why they do not intend to address the health need.

A joint implementation strategy adopted for the hospital facility must also: Be clearly identified as applying to the hospital facility, Clearly identify the hospital facility's role and responsibilities in taking the actions described in the implementation strategy as well as the resources the hospital facility plans to commit to such actions, and Include a summary or other tool that helps the reader easily locate those portions of the joint implementation strategy that relate to the hospital facility.

Adoption of Implementation Strategy

An authorized body of the hospital facility must adopt the implementation strategy. See the discussion of the Financial Assistance Policy below for the definition of an authorized body.· This must be done on or before the 15th day of the fifth month after the end of the taxable year in which the hospital facility finishes conducting the CHNA. This is the same due date (without extensions) of the Form 990.

Acquired Facilities A hospital organization that acquires a hospital facility (through merger or acquisition) must meet the requirements of Section 501(r)(3) with respect to the acquired hospital facility by the last day of the organization's second taxable year beginning after the date on which the hospital facility was acquired. In the case of a merger that results in the liquidation of one organization and survival of another, the hospital facilities formerly operated by the liquidated organization will be considered "acquired," meaning they will have until the last day of the second taxable year beginning after the date of the merger to meet the CHNA requirements. Thus, the final regulations treat mergers equivalently to acquisitions.

New Hospital Organizations

An organization that becomes newly subject to the requirements of Section 501(r) because it is recognized as described in Section 501(c)(3) and is operating a hospital facility must meet the requirements of Section 501(r)(3) with respect to any hospital facility by the last day of the second taxable year beginning after the latter of: The effective date of the determination letter recognizing the organization as described in Section 501(c)(3), or · The first date that a facility operated by the organization was licensed, registered, or similarly recognized by a state as a hospital.

New Hospital Facilities

A hospital organization must meet the requirements of Section 501(r)(3), with respect to a new hospital facility it operates by the last day of the second taxable year beginning after the date the facility was licensed, registered, or similarly recognized by its state as a hospital.

Transferred/Terminated Facilities

A hospital organization is not required to meet the requirements of Section 501(r)(3) with respect to a hospital facility in a taxable year if the hospital organization transfers all ownership of the hospital facility to another organization or otherwise ceases its operation of the hospital facility before the end of the taxable year. The same rule applies if the hospital facility ceases to be licensed, registered, or similarly recognized as a hospital by a state during the taxable year. By extension, a government hospital organization that voluntarily terminates its Section 501(c)(3) recognition as described in Rev. Proc. 2018-5 (updated annually) is no longer considered a hospital organization for purposes of Section 501(r) and therefore is not required to meet the CHNA requirements during the taxable year of its termination.

Public Health Criteria:

Domain 1: Conduct and disseminate assessments focused on population health status and public health issues facing the community.

Domain 1 focuses on the assessment of the health of the population in the jurisdiction served by the health department. The domain includes systematic monitoring of health status; collection, analysis, and dissemination of data; use of data to inform public health policies, processes, and interventions; and participation in a process for the development of a shared, comprehensive health assessment of the community.

DOMAIN 1 includes 4 STANDARDS:

- **Standard 1.1** - Participate in or Conduct a Collaborative Process Resulting in a Comprehensive Community Health Assessment
- **Standard 1.2** - Collect and Maintain Reliable, Comparable, and Valid Data That Provide Information on Conditions of Public Health Importance and on the Health Status of the Population
- **Standard 1.3** - Analyze Public Health Data to Identify Trends in Health Problems, Environmental Public Health Hazards, and Social and Economic Factors That Affect the Public's Health
- **Standard 1.4** - Provide and Use the Results of Health Data Analysis to Develop Recommendations Regarding Public Health Policy, Processes, Programs, or Interventions

Required CHNA Planning Process Requirements:

- a. Participation by a wide range of community partners.
- b. Data / information provided to participants in CHNA planning process.
- c. Evidence of community / stakeholder discussions to identify issues & themes. Community definition of a "healthy community" included along with list of issues.
- d. Community assets & resources identified.
- e. A description of CHNA process used to set priority health issues.

Seven Steps of Public Health Department Accreditation (PHAB):

1. Pre-Application
2. Application
3. Document Selection and Submission
4. Site Visit
5. Accreditation Decision
6. Reports
7. Reaccreditation

MAPP Process Overview

Mobilizing for Action through Planning and Partnerships (MAPP) is a flexible strategic planning tool for improving the health and quality of life for the community. Like most strategic planning, MAPP involves organizing partners, creating a vision and shared values, collecting data, identifying areas for improvement, and developing goals and strategies to address them. Through collaboration with partners and the community, MAPP allows us to focus our efforts and work on issues to strengthen the local public health system.

The MAPP process includes the following six phases. It's important to note that MAPP has no set end point and will continue throughout the life cycle of the Community Health Improvement Plan (CHIP).

1. In this first phase, **Organize for Success/Partnership Development**, various sectors of the community with established relationships are reviewed, leading to the identification of areas for partnership development and creation of new relationships to enhance the MAPP process.
2. In the second phase, **Visioning**, a shared community vision and common values for the MAPP process are created.
3. In the third phase, **Four MAPP Assessments**, data is collected from existing and new sources about the health of our community, which results in a Community Health Assessment (CHA).
4. In the fourth phase, **Identify Strategic Issues**, community partners and health professionals select issues based on data collected from the third phase that are critical to the local public health system and align with the vision from the second phase.
5. In the fifth phase, **Formulate Goals and Strategies**, potential ways to address the strategic issues are identified by the community along with the setting of achievable goals. The final result is a Community Health Improvement Plan (CHIP).
6. The sixth and final phase of the MAPP process is the **Action Cycle**, which is where the work happens for meeting the objectives set in the previous phase. Through these collaborative efforts, the health of the community is improved.



Drivers of Health Assessment & Improvement Planning

Different drivers have led health agencies and organizations to institutionalize community health assessment and community health improvement planning in recent years.

National Voluntary Accreditation Requirements

In 2011, the Public Health Accreditation Board (PHAB), in partnership with key public health organizations, launched a new national voluntary accreditation program for state, tribal, local, and territorial health departments. The standards and measures encompass 12 domains of performance and include a comprehensive community health assessment (Domain 1, Standard 1.1) and a community health improvement plan (Domain 5, Standard 5.2). A documented community health assessment and improvement plan are two of the three prerequisites for applying to PHAB. PHAB requires that these processes be conducted collaboratively and that the documents be dated within the last five years. More information is available from [PHABexternal icon](#) and [CDC](#).

CDC Grant Requirements

CDC grants often require or encourage completing a community health assessment or improvement plan. In some cases, these plans provide valuable information for identifying priority health issues or needs. Examples include ; [National Public Health Improvement Initiative \(NPHII\)](#); [Community Transformation Grants or REACH Core](#)

The Public Health Accreditation board defines *community health assessment* as a systematic examination of the health status indicators for a given population that is used to identify key problems and assets in a community. The ultimate goal of a community health assessment is to develop strategies to address the community's health needs and identified issues. A variety of tools and processes may be used to conduct a community health assessment; the essential ingredients are community engagement and collaborative participation. Turnock B. *Public Health: What It Is and How It Works*. Jones and Bartlett, 2009, as adapted in [Public Health Accreditation Board Acronyms and Glossary of Terms Version 1.0 Cdc-pdf\[PDF – 536KB\]External](#), July 2011.

The Catholic Health Association defines a *community health needs assessment* as a systematic process involving the community to identify and analyze community health needs and assets in order to prioritize these needs, and to plan and act upon unmet community health needs.” Catholic Health Association, [Guide to Assessing and Addressing Community Health Needs Cdc-pdf\[PDF-1.5MB\]External](#), June 2013.

Social Determinants of Health

What Are Social Determinants of Health?



[Social determinants of health \(SDOH\)external icon](#) are defined as the conditions in which people are born, grow, live, work, and age. SDOH are shaped by the distribution of money, power, and resources throughout local communities, nations, and the world. Differences in these conditions lead to health inequities or the unfair and avoidable differences in health status seen within and between countries.

[Healthy People 2030external icon](#) includes SDOH among its leading health indicators. One of Healthy People 2030's five overarching goals is specifically related to SDOH: Create social, physical, and economic environments that promote attaining the full potential for health and well-being for all.

Through broader awareness of how to better incorporate SDOH throughout the multiple aspects of public health work and the [10 Essential Public Health Services](#), public health practitioners can transform and strengthen their capacity to advance health equity. Health equity means that everyone has a fair and just opportunity to be as healthy as possible. This requires removing obstacles to health, such as poverty, discrimination, and their consequences, including powerlessness and lack of access to good jobs with fair pay, quality education and housing, safe environments, and health care.

II. Methodology

b) Collaborating CHNA Parties

Working together to improve community health takes collaboration. Listed below is an in-depth profile of the local hospital and health department CHNA partners:

Coffeyville Regional Medical Center

1400 W 4th St, Coffeyville, KS 67337

President & CEO: Brian Lawrence, MHA

Phone: (620) 251-1200

About: Coffeyville Regional Medical Center (CRMC) is a 501(c)3 municipal, non-profit hospital licensed for 47 beds. On an annual basis, we serve over 45,000 patients from Montgomery, Chautauqua, Labette, Allen, Neosho and Wilson counties in Kansas, as well as Nowata and Craig counties in Oklahoma. Established in 1949, CRMC has grown over the years and expanded its facilities and technology to stay current with today's world. Our mission is to serve our patients and families with the highest quality healthcare.

As a rural hospital, CRMC is surprising because of its large size and wide variety of services. Although we can provide many of the same services you will find in a big city, we take great pride in our friendly and caring staff. Our physicians have lived, worked and been involved in our community for many years. Some have been here 30-plus years; they know you, not only as a patient, but as a friend and neighbor.

Whether you are a patient, family member or visitor, we want you to feel like part of our family when you come through our doors. Any hospital can provide nursing care, but we believe that we go beyond, providing great care with a "tender loving" touch. If you haven't visited CRMC in a while, please choose us, your neighbor, the next time you need hospital services. Come and feel the difference.

Services: Coffeyville Regional Medical Center offers a complete continuum of healthcare services. Physicians and other clinical staff are dedicated to serving the Coffeyville community through primary care and advanced medical specialties.

From newborns to end-of-life support, to all the needs in between, the physicians and staff of Coffeyville Regional Medical Center are committed to treating each patient with compassionate, quality health care.

- CANCER/ONCOLOGY SERVICES
 - JERRY MARQUETTE RADIATION ONCOLOGY CENTER
 - TATMAN CANCER CENTER
- CARDIOLOGY SERVICES
 - PACEMAKER CLINIC
- DIAGNOSTIC TESTING & IMAGING
 - INTERVENTIONAL RADIOLOGY
- EMERGENCY DEPARTMENT
 - EMERGENCY MEDICAL SERVICES (EMS)
 - SANE/SART EDUCATION
- HOME HEALTH
- INPATIENT CARE
- LABORATORY
- OCCUPATIONAL HEALTH
- ORTHOPEDIC SERVICES
 - SELF-ASSESSMENT: HIP & KNEE PAIN
 - SELF-ASSESSMENT: NECK & BACK PAIN
- OUTPATIENT SERVICES
- PAIN MANAGEMENT
- REHABILITATION
 - AQUATIC SERVICES
 - ARTHRITIS
 - CARDIAC REHABILITATION
 - PHYSICAL THERAPY
 - RESPIRATORY THERAPY
 - SWING BEDS
 - SPEECH THERAPY
 - VITALSTIM THERAPY
- SURGICAL SERVICES
 - EYE SURGERY
 - GENERAL SURGERY
 - GYNECOLOGICAL SURGERY
 - NEUROSURGERY
 - ORTHOPEDIC SURGERY
 - UROLOGICAL SURGERY
- UROLOGY
- WOMEN'S HEALTH
 - CHILDBIRTH PROGRAM

Montgomery County Health Department

908 S Walnut, Coffeyville KS 67337

Phone: (620) 251-4210

217 E Myrtle, Independence, KS 67301

Phone: (620) 331-4300

Administrator: Carolyn Muller, RN

The health department offers a variety of services to prevent disease, promote healthy lifestyle behaviors, and protect the community at large from communicable diseases. Our offices are open 8:30-12:00 and 1:00-5:00 Monday- Friday. Walk In immunization clinics are held each Tuesday 8:30-11:30 and 1:00-4:30. All other services are by appointment.

Our services include Car Seat Checks, Child Care Licensing, Child Health, Chronic Disease Risk Reduction, Community Health Screenings & Education, Disease Investigation, Emergency Preparedness, Healthy Start Home Visits, Immunizations, Allergy or Hormone Injections with doctor's orders, Maternal & Infant program, Teen Pregnancy program, and Women's Health.

Mission: The Mission of the Montgomery County Health Department is to prevent disease and prolong life through organized community effort and cooperation among health care providers, business and industry, schools, civic and professional organizations. There will be an emphasis on control of communicable diseases, personal hygiene, early diagnosis and preventative treatment of diseases, and sanitation of the environment.

The 10 Essential Public Health Services describe the public health activities that all communities should undertake and serve as the framework for the NPHPS instruments.

Public health systems should...

1. Monitor health status to identify and solve community health problems.
2. Diagnose and investigate health problems and health hazards in the community.
3. Inform, educate, and empower people about health issues.
4. Mobilize community partnerships and action to identify and solve health problems.
5. Develop policies and plans that support individual and community health efforts.
6. Enforce laws and regulations that protect health and ensure safety.
7. Link people to needed personal health services and assure the provision of health care when otherwise unavailable.
8. Assure competent public and personal health care workforce.
9. Evaluate effectiveness, accessibility, and quality of personal and population-based health services.
10. Research for new insights and innovative solutions to health problems.

II. Methodology

b) Collaborating CHNA Parties Continued

Consultant Qualifications:

VVV Consultants LLC 601 N. Mahaffie, Olathe, KS 66061 (913) 302-7264

VVV Consultants LLC is an Olathe, KS based “boutique” healthcare consulting firm specializing in Strategy, Research and Business Development services. To date we have completed 70 unique community CHNA’s in KS, MO, IA and NE (references found on our website VandehaarMarketing.com)



VVV Consultants LLC

Introduction: Who We Are

Background and Experience



Vince Vandehaar, MBA – Principal
VVV Consultants LLC – *start 1/1/09 **

- Adjunct Full Professor @ Avila & Webster Universities
- 35+ year veteran marketer, strategist and researcher
- Saint Luke's Health System, BCBS of KC,
- Tillinghast Towers Perrin, and Lutheran Mutual Life
- Hometown: Bondurant IA



Hannah Foster – Associate Consultant
VVV Consultants LLC – *April 2022*

- MO Southern State – Joplin, MO
- Avila University – MBA with HC
- Hometown: Lee's Summit, MO



Cassandra Kahl, BHS – Director, Project Management
VVV Consultants LLC – *Nov 2020*

- University of Kansas – Health Sciences
- Park University - MHA
- Hometown: Maple, WI

VVV Consultants LLC (EIN 27-0253774) began as “VVV Research & Development INC” in early 2009 and converted to an LLC on 12/24/12. Web: VandehaarMarketing.com

Our Mission: to research, facilitate, train, and create processes to improve healthcare delivery and uncover strategic “critical success” initiatives.

Our Vision: meeting today's challenges with the voice of the market.

Our Values :

“Community” – Industry engagement...membership AMA KC, ACHE, EPBA, Forum and SHSMD.

“Stewardship” – Fair fees based on client, project scope, turnaround time, etc.

“Integrity” – Trustworthy delivery with numerous client recommendations / endorsements.

“Experience” – Skilled consulting; Marketing careers. We understand business because we have been there!

“Growth” – Process-driven; ongoing innovational delivery.

II. Methodology

c) CHNA and Town Hall Research Process

Wave #4 Community Health Needs Assessment (CHNA) process began in April of 2022 for Coffeyville Regional Medical Center located in Coffeyville, KS to meet Federal IRS CHNA requirements.

In May 2022, a meeting was called amongst the Coffeyville Regional Medical Center leaders to review CHNA collaborative options. <Note: VVV Consultants LLC from Olathe, KS was asked to facilitate this discussion with the following agenda: VVV CHNA experience, review CHNA requirements (regulations) and discuss CHNA steps/options to meet IRS requirements and to discuss next steps.> Outcomes from discussion led to Coffeyville Regional Medical Center requesting VVV Consultants LLC to complete a CHNA IRS aligned comprehensive report.

VVV CHNA Deliverables:

- Document Hospital Primary Service Area - meets the 80-20 Patient Origin Rule.
- Uncover / document basic secondary research county health data, organized by 10 tabs.
- Conduct / report CHNA Community Check-in Feedback Findings (primary research).
- Conduct a Town Hall meeting to discuss with community secondary & primary data findings leading to determining (prioritizing) county health needs.
- Prepare & publish CHNA report which meets ACA requirements.

To ensure proper PSA Town Hall representation (that meets the 80-20 Patient Origin Rule), a patient origin two-year summary was generated documenting patient draw by zips as seen below:

CRMC Define Primary Service Area				Yr 2019-21 (IP/OP/ER)		
#	Zip	City	County	3YRTot	%	Accum
		Grand Total		208478		
1	67337	COFFEYVILLE	Montgomery	117836	56.5%	56.5%
2	67301	INDEPENDENCE	Montgomery	30438	14.6%	71.1%
3	74072	SOUTH COFFEYVILLE	Montgomery	9074	4.4%	75.5%
4	67333	CANEY	Montgomery	8460	4.1%	79.5%
5	67335	CHERRYVALE	Montgomery	3820	1.8%	81.4%
6	67340	DEARING	Montgomery	3349	1.6%	83.0%
7	67351	LIBERTY	Montgomery	2524	1.2%	84.2%
8	67344	ELK CITY	Montgomery	1063	0.5%	84.7%
9	67347	HAVANA	Montgomery	948	0.5%	85.1%
10	67364	TYRO	Montgomery	741	0.4%	85.5%
11	67363	SYCAMORE	Montgomery	83	0.0%	85.5%

To meet IRS aligned CHNA requirements and meet Public Health accreditation criteria stated earlier, a four-phase methodology was followed:

Phase I—Discovery:

Conduct a 30-minute conference call with the CHNA county health department and hospital clients. Review / confirm CHNA calendar of events, explain / coach clients to complete required participant database and schedule / organize all Phase II activities.

Phase II—Qualify Community Need:

A) Conduct secondary research to uncover the following historical community health status for the primary service area. Use valid health indicator sources cited to document current state of county health organized as follows:

Health Indicators - Secondary Research
TAB 1. Demographic Profile
TAB 2. Economic Profile
TAB 3. Educational Profile
TAB 4. Maternal and Infant Health Profile
TAB 5. Hospital / Provider Profile
TAB 6. Behavioral / Mental Health Profile
TAB 7. High-Risk Indicators & Factors
TAB 8. Uninsured Profile
TAB 9. Mortality Profile
TAB 10. Preventative Quality Measures

B) Survey Community Stakeholders to inquire about past CHNA unmet needs and obtain current health delivery trends and document on going health issues.

Phase III—Quantify Community Need:

Conduct a 90-minute Town Hall meeting with required community primary service area residents. At each Town Hall meeting, CHNA secondary data will be reviewed, facilitated group discussion will occur and a group ranking activity to determine the most important community unmet health needs was administered.

Phase IV—Complete Data Analysis and Create Comprehensive Community Health Needs Assessment:

Complete full documentation to create each CHNA sections documented in Table of Contents. Publish hard copy reports (2) for client usage plus create a full CHNA report pdf to be posted on hospital website to meet government CHNA regulation criteria.

Detail CHNA Development Steps Include:

Development Steps to Create Comprehensive Community Health Needs Assessment	
Step # 1 Commitment	<i>Determine interest level of area healthcare leaders (Hospital, Health Dept., Mental Health Centers, Schools, Churches, Physicians etc.), prepare project quote.</i>
Step # 2 Planning	<i>Prepare brief CHNA Project Work Calendar - list goals, objectives, purpose, outcome, roles, community involvement, etc. Hold Community Kick-off meeting.</i>
Step # 3 Secondary Research	<i>Collect & Report Community Health Published Facts. Gather data health practice data from published secondary research sources i.e. census, county health records, behavioral risk factors surveillance, etc.</i>
Step # 4a Primary Research - Town Hall prep	<i>Collect Community Opinions. (Quantitative Research). Gather Stakeholders / Community opinions regarding community health needs and healthcare practices.</i>
Step # 4b Primary Research - Conduct Town Hall	<i>Conduct "Conversation with Community" Town Hall (Qualitative Research). Review Secondary & Primary Data findings. Facilitate community conversation to build consensus; discuss opinions / identify health needs.</i>
Steps # 5 Reporting	<i>Prepare/Present comprehensive CHNA report (to community leaders), facilitate development of CHNA Implementation Plan (Actions to improve health). < Note: Formal report will follow IRS Notice 2011-52 regs & PHAB requirements. ></i>
VVV Consultants, LLC Olathe, KS 913 302-7264	

Data & Benchmarks Review

Community health assessments typically use both primary and secondary data to characterize the health of the community:

- **Primary data** are collected first-hand through surveys, listening sessions, interviews, and observations.
- **Secondary data** are collected by another entity or for another purpose.
- **Indicators** are secondary data that have been analyzed and can be used to compare rates or trends of priority community health outcomes and determinants.

Data and indicator analyses provide descriptive information on demographic and socioeconomic characteristics; they can be used to monitor progress and determine whether actions have the desired effect. They also characterize important parts of health status and health determinants, such as behavior, social and physical environments, and healthcare use.

Community health assessment indicators should be.

- Methodologically sound (valid, reliable, and collected over time)
- Feasible (available or collectable)
- Meaningful (relevant, actionable, and ideally, linked to evidence-based interventions)
- Important (linked to significant disease burden or disparity in the target community)

Jurisdictions should consider using data and indicators for the smallest geographic locations possible (e.g., county-, census block-, or zip code-level data), to enhance the identification of local assets and gaps.

Local reporting (county specific) sources of community-health level indicators:

CHNA Detail Resources
Quick Facts - Business
Centers for Medicare and Medicaid Services
CMS Hospital Compare
County Health Rankings
Quick Facts - Geography
Quick Facts - People
U.S. Department of Agriculture - Food Environment Atlas
U.S. Center for Disease Control and Prevention

Sources of community-health level indicators:

- [County Health Rankings and Roadmaps](#)
The annual Rankings measure vital health factors, including high school graduation rates, obesity, smoking, unemployment, access to healthy foods, the quality of air and water, income inequality, and teen births in nearly every county in America. They provide a snapshot of how health is influenced by where we live, learn, work and play.
- [Prevention Status Reports \(PSRs\)](#)
The PSRs highlight—for all 50 states and the District of Columbia—the status of public health policies and practices designed to prevent or reduce important public health problems.
- [Behavioral Risk Factor Surveillance System](#)
The world's largest, ongoing telephone health survey system, tracking health conditions and risk behaviors in the United States yearly since 1984. Data are collected monthly in all 50 states, the District of Columbia, Puerto Rico, the US Virgin Islands, and Guam.
- The [Selected Metropolitan/ Micropolitan Area Risk Trends](#) project was an outgrowth of BRFSS from the increasing number of respondents who made it possible to produce prevalence estimates for smaller statistical areas.
- [CDC Wonder](#) Databases using a rich ad-hoc query system for the analysis of public health data. Reports and other query systems are also available.
- [Center for Applied Research and Engagement Systems external icon](#)
Create customized interactive maps from a wide range of economic, demographic, physical and cultural data. Access a suite of analysis tools and maps for specialized topics.
- [Community Commons external icon](#)
Interactive mapping, networking, and learning utility for the broad-based healthy, sustainable, and livable communities' movement.
- [Dartmouth Atlas of Health Care external icon](#)
Documented variations in how medical resources are distributed and used in the United States. Medicare data used to provide information and analysis about national, regional, and local markets, as well as hospitals and their affiliated physicians.
- [Disability and Health Data System](#)
Interactive system that quickly helps translate state-level, disability-specific data into valuable public health information.
- [Heart Disease and Stroke Prevention's Data Trends & Maps](#)
View health indicators related to heart disease and stroke prevention by location or health indicator.
- [National Health Indicators Warehouse external icon](#)
Indicators categorized by topic, geography, and initiative.
- [US Census Bureau external icon](#)
Key source for population, housing, economic, and geographic information.
- [US Food Environment Atlas external icon](#)
Assembled statistics on food environment indicators to stimulate research on the determinants of food choices and diet quality, and to provide a spatial overview of a community's ability to access healthy food and its success in doing so.
- [Centers for Medicare & Medicaid Services Research and Data Clearinghouse external icon](#)
Research, statistics, data, and systems.
- [Environmental Public Health Tracking Network](#)
System of integrated health, exposure, and hazard information and data from a variety of national, state, and city sources.
- [Health Research and Services Administration Data Warehouse external icon](#)
Research, statistics, data, and systems.
- [Healthy People 2030 Leading Health Indicators external icon](#)
Twenty-six leading health indicators organized under 12 topics.
- [Kids Count external icon](#)
Profiles the status of children on a national and state-by-state basis and ranks states on 10 measures of well-being; includes a [mobile site external icon](#).
- [National Center for Health Statistics](#)
Statistical information to guide actions and policies.
- [Pregnancy Risk Assessment and Monitoring System](#)
State-specific, population-based data on maternal attitudes and experiences before, during, and shortly after pregnancy.
- [Web-based Injury Statistics Query and Reporting System \(WISQARS\)](#)
Interactive database system with customized reports of injury-related data.
- [Youth Risk Behavior Surveillance System](#)
Monitors six types of health-risk behaviors that contribute to the leading causes of death and disability among youth and adults.

Specific project CHNA roles, responsibilities, and timelines are documented in the following calendar.

Coffeyville Regional Medical Center - (Montgomery Co. KS) VVV CHNA Wave #4 Work Plan - Year 2022			
Project Timeline & Roles - Working Draft as of 4/17/22			
Step	Timeframe	Lead	Task
1	4/01/2022	VVV / Hosp	Sent Leadership information regarding CHNA Wave #4 for review.
2	4/4/2022	Hosp	Select CHNA Wave #4 Option B. Approve / Sign VVV CHNA quote
3	5/15/2022	VVV	Hold Kick-off Meeting. Send out REQCommInvite Excel file. HOSP & HLTH Dept to fill in PSA Stakeholders Names /Address /Email
4	5/15/2022	VVV	& Request Hospital Client to send NHA PO reports for FFY 19, 20 and 21. In addition, request hospital to complete 3 year historical PSA IP/OP/ER/Clinic patient origin file (Use ZipPSA_3yrPOorigin.xls)
5	6/24/2022	VVV	Prepare CHNA Wave#4 Stakeholder Feedback "online link". Send link for hospital review.
6	May - June 2022	VVV	Assemble & complete Secondary Research - Find / populate 10 TABS. Create Town Hall ppt for presentation.
7	6/24/2022	VVV / Hosp	Prepare/send out PR story#1 / Email#1 Request announcing upcoming CHNA work to CEO to review/approve.
8	6/24/2022	VVV / Hosp	Place PR #1 story to local media CHNA survey announcing "online CHNA Wave #4 feedback". Request public to participate. Send E Mail request to local stakeholders
9	6/24/2022	VVV	Launch / conduct online survey to stakeholders: Hospital will e-mail invite to participate to all stakeholders. Cut-off 7/22/2022 for Online Survey
10	By 7/15/2022	Hosp	Prepare/send out to leaders the PR#2 story / Email#2 Request announcing upcoming Community TOWN HALL invite letter and place local AD.
11	7/18/2022	VVV / Hosp	Place PR #2 story to local media / Send Email to local stakeholders announcing / requesting participation in upcoming Town Hall Event.
12	8/9/2022	ALL	Conduct conference call (time TBD) with Hospital / Public HLTH to review Town Hall data / flow
13	Thursday Aug. 11th, 2022	VVV	Conduct CHNA Town Hall for a working lunch (11:30 a.m.-1:00 p.m.) . Review & Discuss Basic health data plus RANK Health Needs.
14	On or Before 9/17/2022	VVV	Complete Analysis - Release Draft 1- seek feedback from Leaders (Hospital & Health Dept.)
15	On or Before 9/30/2022	VVV	Produce & Release final CHNA report. Hospital will post CHNA online (website).
16	Oct 11?	VVV	Conduct Client Implementation Plan PSA Leadership meeting
17	TBD	VVV	Hold Board Meetings discuss CHNA needs, create & adopt an implementation plan. Communicate CHNA plan to community.

Community Health Needs Assessment Town Hall Meeting – Montgomery Co (KS) on behalf of Coffeyville Regional Medical Center



VVV Consultants LLC

Olathe, Kansas 66061

VandelaarMarketing.com
913-302-7264

1

Community Health Needs Assessment (CHNA) Onsite Town Hall Discussion Agenda

- I. Opening / Introductions (5 mins)
- II. Review CHNA Purpose and Process (5 mins)
- III. Review Current County "Health Status"
 - Secondary Data by 10 TAB Categories
 - Review Community Feedback Research (40 mins)
- IV. Collect Community Health Perspectives
 - Hold Community Voting Activity
 - Determine Most Important Unmet Needs (35 mins)
- V. Close / Next Steps (5 mins)

2

Introduction: Who We Are Background and Experience



Vince Vandelaar, MBA – Principal
VVV Consultants LLC – start 1/1/09 *

- Adjunct Full Professor @ Avila & Webster Universities
- 35+ year veteran marketer, strategist and researcher
- Saint Luke's Health System, BCBS of KC,
- Tillinghast Towers Perrin, and Lutheran Mutual Life
- Hometown: Bondurant IA



Hannah Foster – Associate Consultant
VVV Consultants LLC – April 2022

- MO Southern State – Joplin, MO
- Avila University – MBA with HC
- Hometown: Lee's Summit, MO



Cassandra Kahl, BHS – Director, Project Management
VVV Consultants LLC – Nov 2020

- University of Kansas – Health Sciences
- Park University - MHA
- Hometown: Maple, WI

3

CHNA Experience



2022 CHNA Wave #4 - VVV Consultants LLC Clients						
#	2021 Clients	Location	T Hall	#	2022 Clients	Location
1	Gove Co Med Center	Quinter, KS	OnSite	22	Tri Valley	Cambridge NE
2	Pawnee Valley	Larned, KS	Virtual	23	G.C. Grape Mem Hosp	Hamburg IA
3	Citizens Health	Colby, KS	Virtual	24	SAC	Shenandoah IA
4	Hays Medical	Hays, KS	Virtual	25	MercyOne Centerville	Centerville IA
5	Osborne Co Mem H	Osborne, KS	Virtual	26	Manning Regional	Manning IA
6	Smith Co Mem Hosp	Smith Ctr, KS	Virtual	27	MercyOne Newton	Newton, IA
7	Sheridan Co	Hoxie, KS	OnSite	28	MercyOne Elkhart	Elkhart, IA
8	Kowa Co	Greensburg, KS	OnSite	29	Elkworth Co Med Ctr	Elkworth, IA
9	Pratt Reg	Pratt, KS	OnSite	30	Republic Co Hosp	Republic, KS
10	Nemaha Valley Com	Sabetha, KS	OnSite	31	Cameron Reg PSA	Cameron, MO
11	Sabetha Comm	Sabetha, KS	OnSite	32	Hannibal Reg PSA	Hannibal, MO
12	Miami County	Paola, KS	OnSite	33	Melham Mem Hospital	Broken Bow NE
13	Olathe Med	OMC JCCC	OnSite	34	Dickinson Co KS	Abilene, KS
14	Patterson Health	Anthony, KS	OnSite	35	Ray County MO	Ray County MO
15	Trego Co	Wakeeney KS	OnSite	36	Atchison Co KS	Atchison, KS
16	Russell Reg	Russell, KS	OnSite	37	Brown Co KS	Hawatha, KS
17	Carroll Co MO	Carrollton, MO	OnSite	38	Cass Regional	Harrisonville, MO
18	Cowley Co	Winfield, KS	Virtual	39	Cherokee Regional	Cherokee, IA
19	Marion Co	Hillsboro, KS	OnSite	40	Golden Valley HC	Clinton, MO
20	HCH Jackson Co	Holton, KS	OnSite	41	Coffeyville Regional	Coffeyville, KS
21	ECMC - Not Online	Kinsley, KS	Virtual			

4

Town Hall Participation (You)

- ALL attendees practice “Safe Engagement”. We will work together - Table Teams
- ALL attendees welcome to share. Engaging Conversation (No right or wrong answer)
 - Parking Lot
- ALL Take Notes – Important Health Indicators
- Please give truthful responses – Serious Community Conversation. Here to Update Unmet Needs List.
- Have a little fun along the way

5

II. Review of a CHNA

- **A Community Health Needs Assessment (CHNA) is a....**
 - Systematic collection, assembly, analysis, and dissemination of information about the health of the community.
- **A CHNA's role is to....**
 - Identify factors that affect the health of a population and determine the availability of resources to adequately address those factors.
- **Purpose of a CHNA – Why Conduct One?**
 - Determine health-related trends and issues of the community
 - Understand / evaluate health delivery programs in place.
 - Meet Federal requirements – both local hospital and health department
 - Develop Implementation Plan strategies to address unmet health needs (4-6 weeks after Town Hall)

6

A Conversation with the Community & Stakeholders

Community members and organizations invited to CHNA Town Hall

Consumers: Uninsured/underinsured people, Members of at-risk populations, Parents, caregivers and other consumers of health care in the community, and Consumer advocates.

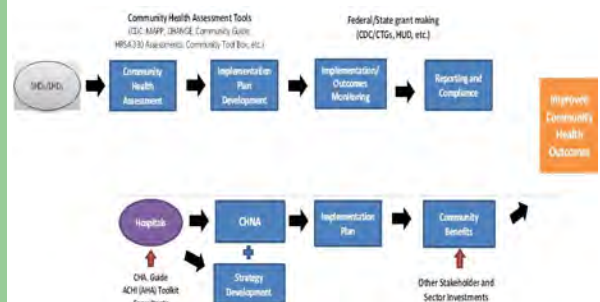
Community leaders and groups: The hospital organization's board members, Local clergy and congregational leaders, Presidents or chairs of civic or service clubs – Chamber of Commerce, veterans' organizations, Lions, Rotary, etc., Representatives from businesses – owners/CEO's of large businesses (local or large corporations with local branches), Business people & merchants (e.g., who sell tobacco, alcohol, or other drugs), Representatives from organized labor, Political, appointed and elected officials, Foundations, United Way organizations. And other "community leaders."

Public and other organizations: Public health officials, Directors or staff of health and human service organizations, City/Community planners and development officials, Individuals with business and economic development experience, Welfare and social service agency staff, Housing advocates - administrators of housing programs: homeless shelters, low-income-family housing and senior housing, Education officials and staff - school superintendents, principals and teachers, Public safety officials, Staff from state and area agencies on aging, Law enforcement agencies - Chiefs of police, Local colleges and universities, Coalitions working on health or other issues.

Other providers: Physicians, Leaders in other not-for-profit health care organizations, such as hospitals, clinics, nursing homes and home-based and community-based services, Leaders from Catholic Charities and other faith-based service providers, Mental health providers, Oral health providers, Health insurers, Parish and congregational nursing programs, Other health professionals

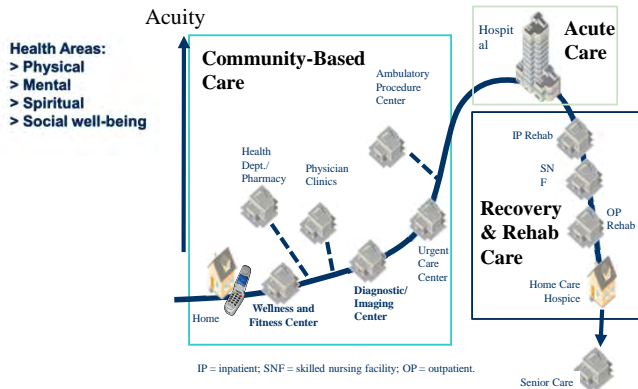
7

Community Health Needs Assessment Joint Process: Hospital & Local Health Providers



8

Future System of Care—Sg2



9

Triple Aim Focus



10

II. IRS Hospital CHNA Written Report Documentation – Table of Contents

- A description of the community served
- A description of the CHNA process
- The identity of any and all organizations and third parties which collaborated to assist with the CHNA
- A description of how the organization considered the input of persons representing the community (e.g., through meetings, focus groups, interviews, etc.), who those persons are, and their qualifications
- A **prioritized description of all of the community needs identified by the CHNA.**
- A description of the existing health care facilities and other resources within the community available to meet the needs identified through the CHNA

11

III. Review Current County Health Status: Secondary Data by 10 Tab Categories & State Rankings

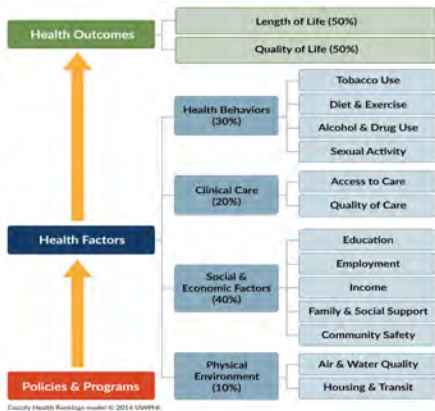
Trends: Good Same Poor

Health Indicators - Secondary Research

TAB 1. Demographic Profile
TAB 2. Economic Profile
TAB 3. Educational Profile
TAB 4. Maternal and Infant Health Profile
TAB 5. Hospital / Provider Profile
TAB 6. Behavioral / Mental Health Profile
TAB 7. High-Risk Indicators & Factors
TAB 8. Uninsured Profile
TAB 9. Mortality Profile
TAB 10. Preventative Quality Measures

12

County Health Rankings - Robert Wood Johnson Foundation and University of WI Health Institute



13

1	Physical Environment (10%)	2b	Social and Economic Environment (40%)
Focus Area	Measure	Focus Area	Measure
Air and water quality (5%)	Air pollution - particulate matter Drinking water violations	Community safety (5%)	Violent crime Injury deaths
	The average daily measure of fine particulate matter in micrograms per cubic meter (PM2.5) in a county Percent of population potentially exposed to water exceeding a violation limit during the past year		Violent crime rate per 100,000 population Injury mortality per 100,000
Housing and transit (5%)	Severe housing problems Driving alone to work Long commutes - driving alone		Health Outcomes (10%) Health Behaviors
	Percent of households, with at least 1 of 4 housing problems: overcrowding, high housing costs, or lack of kitchen or plumbing facilities Percent of the workforce that drives alone to work Among workers who commute in their car alone, the percent that commute more than 30 minutes		
2	Clinical Care (20%)	Focus Area	Measure
Focus Area	Description	Tobacco use	Adult smoking
Access to care (10%)	Percent of population under age 65 without health insurance Ratio of population to primary care physicians Dentists Mental health providers	Diet and exercise (10%)	Adult obesity
	Primary care physicians Dentists Mental health providers		Food environment index Physical inactivity
Quality of care (10%)	Preventable hospital admissions Diabetic screening Mammography screening	Alcohol and drug use (5%)	Excessive drinking Alcohol-impaired driving deaths
	Hospitalization rate for ambulatory-care sensitive conditions per 1,000 Medicare enrollees Percent of diabetic Medicare enrollees that receive HbA1c screening Percent of female Medicare enrollees that receive mammography screening		Sexually transmitted infections Teen births
2b	Social and Economic Environment (40%)	3b / 3c	Morbidity / Mortality
Focus Area	Measure	Focus Area	Measure
Education (10%)	High school graduation Some college	Quality of life (50%)	Poor or fair health days Poor physical health days Poor mental health days
Employment (10%)	Unemployment		Average number of physically unhealthy days reported in past 30 days (age-adjusted) Average number of mentally unhealthy days reported in past 30 days (age-adjusted)
Income (10%)	Children in poverty		Percent of live births with low birthweight (< 5500 grams)
Family and social support (5%)	Inadequate social support Children in single-parent households		Premature death
	Percent of adults without social/emotional support Percent of children that live in household headed by single parent		Years of potential life lost before age 75 per 100,000 population (age-adjusted)

14

IV. Collect Community Health Perspectives Thoughts/Opinions?

- 1) **Today:** What are the strengths of our community that contribute to health? (White card)
- 2) **Today:** Are there healthcare services in your community/neighborhood that you feel need to be improved and/or changed? (Color card)
- 3) **Tomorrow:** What is occurring or might occur that would affect the "health of our community?"

15

Community Health Needs Assessment



VVV Consultants LLC
601 N Mahaffie
Olathe, KS 66061

Questions? Next Steps?

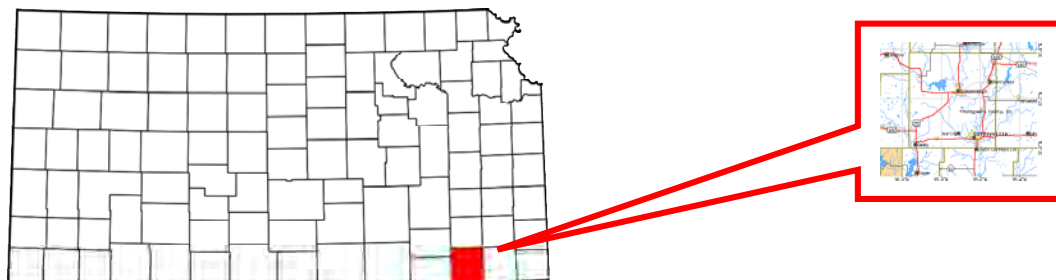
VVV@VandehaarMarketing.com
HCF@VandehaarMarketing.com
MEG@VandehaarMarketing.com
(913) 302-7264

16

II. Methodology

d) Community Profile (A Description of Community Served)

Montgomery County, Kansas Community Profile



The population of Montgomery County was estimated to be 30,687 citizens in 2022 and a population density of 48 persons per square mile. Montgomery County's major cities are Caney, Cherryvale, Coffeyville, Dearing, Elk City, Havana, Independence, Liberty and Tyro.

Montgomery County (KS) Public Airports¹

Name	USGS Topo Map
Caney Shepherd Center Heliport	Caney
Coffeyville Memorial Hospital Airport	Coffeyville West
Coffeyville Municipal Airport	Coffeyville East
Coffeyville Regional Medical Center Heliport	Coffeyville West
Darbro Field	Elk City
Harmony Valley Airport	Liberty
Independence Municipal Airport	Bolton
Patterson Farms Airport	Bolton

¹ <https://kansas.hometownlocator.com/features/cultural,class,airport,scfips,20125.cfm>

Montgomery County (KS): Public Schools²

Name	Level
Caney Valley Charter Academy	High
Caney Valley High	High
Cherryvale Sr / Middle School	High
Community Elementary	Elementary
Eisenhower Elem	Elementary
Field Kindley High	High
Independence Middle	Middle
Independence Sr High	High
Jefferson School	Elementary
Lincoln Central Elem	Elementary
Lincoln Memorial Elem	Elementary
Roosevelt Middle	Middle

² <https://kansas.hometownlocator.com/schools/sorted-by-county,n,montgomery.cfm>

Montgomery County, KS - Detail Demographic Profile

			Population				Households		HH	Per Capita
	ZIP	NAME	County	Year 2020	Year 2025	Change	Year 2020	Year 2025	Avg Size 2020	Income 2020
1	67301	Independence	MONTGOMERY	12,394	11,740	-5.28%	5,017	4,743	2.4	\$24,082
2	67333	Caney	MONTGOMERY	3,111	2,953	-5.08%	1,217	1,156	2.5	\$23,007
3	67335	Cherryvale	MONTGOMERY	3,556	3,415	-3.97%	1,396	1,339	2.5	\$23,062
4	67337	Coffeyville	MONTGOMERY	12,469	11,819	-5.21%	5,109	4,834	2.3	\$24,131
5	67340	Dearing	MONTGOMERY	338	323	-4.44%	153	147	2.2	\$32,850
6	67344	Elk City	MONTGOMERY	706	669	-5.24%	297	283	2.4	\$23,866
7	67347	Havana	MONTGOMERY	374	374	0.00%	160	160	2.3	\$29,333
8	67351	Liberty	MONTGOMERY	529	524	-0.95%	222	221	2.4	\$31,697
9	67363	Sycamore	MONTGOMERY	43	41	-4.65%	21	20	2.1	\$40,152
10	67364	Tyro	MONTGOMERY	128	130	1.56%	53	53	2.4	\$31,962
Totals				33,648	31,988	-4.93%	13,645	12,956	2.4	\$28,414

				Population				Year 2020		Females
	ZIP	NAME	County	Year 2020	Pop. 65+	Kids<18	Gen Y	Males	Females	Age 20-35
1	67301	Independence	MONTGOMERY	12,394	2,452	4,055	1,511	40	6,275	1,399
2	67333	Caney	MONTGOMERY	3,111	599	893	422	41	1,572	389
3	67335	Cherryvale	MONTGOMERY	3,556	705	1,078	426	42	1,768	380
4	67337	Coffeyville	MONTGOMERY	12,469	2,705	3,906	1,569	41	6,421	1,528
5	67340	Dearing	MONTGOMERY	338	76	80	35	48	161	33
6	67344	Elk City	MONTGOMERY	706	185	173	78	51	330	60
7	67347	Havana	MONTGOMERY	374	94	96	38	48	185	33
8	67351	Liberty	MONTGOMERY	529	135	129	60	49	256	51
9	67363	Sycamore	MONTGOMERY	43	12	10	4	53	22	4
10	67364	Tyro	MONTGOMERY	128	29	31	14	49	66	12
Totals				33,648	6,992	10,451	4,157	459	17,056	3,889

				Population 2020				Average Households 2020		
	ZIP	NAME	County	Caucasian	African Amer	Amer Ind.	Hispanic	HH Inc	HH	HH \$50K+
1	67301	Independence	MONTGOMERY	83.4%	6.13%	1.80%	7.53%	\$5,017	46,197	2,301
2	67333	Caney	MONTGOMERY	84.3%	0.84%	5.98%	5.46%	\$1,217	44,053	578
3	67335	Cherryvale	MONTGOMERY	93.3%	0.90%	1.43%	4.25%	\$1,396	45,458	673
4	67337	Coffeyville	MONTGOMERY	72.7%	9.80%	4.98%	8.65%	\$5,109	42,721	2,274
5	67340	Dearing	MONTGOMERY	83.7%	1.18%	5.03%	1.78%	\$153	62,516	98
6	67344	Elk City	MONTGOMERY	93.2%	0.42%	2.27%	1.27%	\$297	44,800	137
7	67347	Havana	MONTGOMERY	86.4%	0.80%	6.68%	0.80%	\$160	55,741	96
8	67351	Liberty	MONTGOMERY	92.2%	1.13%	2.08%	1.89%	\$222	58,617	131
9	67363	Sycamore	MONTGOMERY	93.0%	2.33%	2.33%	2.33%	\$21	57,143	14
10	67364	Tyro	MONTGOMERY	85.2%	0.78%	4.69%	1.56%	\$53	65,976	39
Totals				86.74%	2.43%	3.73%	3.55%	\$1,365	523,222	6,341

Source: ERSI Demographics

III. Community Health Status

[VVV Consultants LLC]

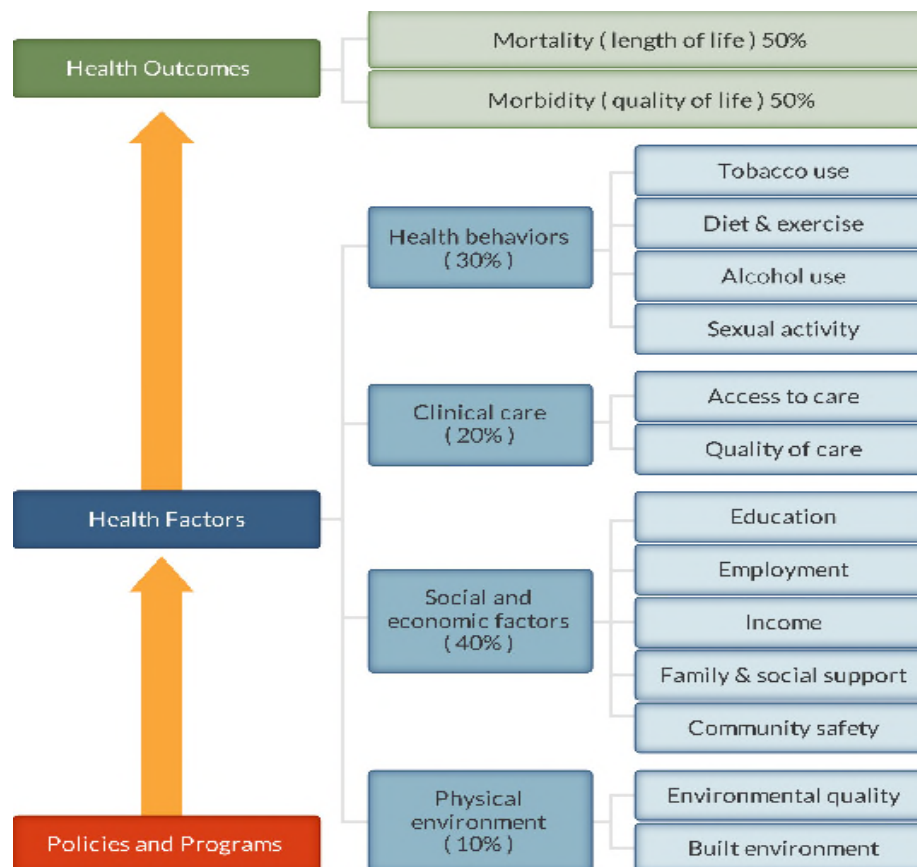
III. Community Health Status

a) Historical Health Statistics- Secondary Research

Health Status Profile

This section of the CHNA reviews published quantitative community health indicators from public health sources and results of community primary research. To produce this profile, VVV Consultants LLC staff analyzed & trended data from multiple sources. This analysis focuses on a set of published health indicators organized by ten areas of focus (10 TABS), results from the 2020 RWJ County Health Rankings and conversations from Town Hall participates. Each table published reflects a Trend column, with GREEN denoting growing/high performance indicators, YELLOW denoting minimal change/average performance indicators and RED denoting declining/low performance indicators.

Note: The Robert Wood Johnson Foundation collaborates with the University of Wisconsin Population Health Institute to release annual *County Health Rankings*. As seen below, RWJ's model use a number of health factors to rank each county.



County Health Rankings model ©2012 UWPHI

National Research – Year 2022 RWJ Health Rankings:

#	KS Rankings - 105 Counties	Definitions	Montgomery Co. KS	TREND	KS Rural 25 Norm
1	Health Outcomes		98		79
2	Mortality	Length of Life	93		22
3	Morbidity	Quality of Life	99		97
4	Health Factors		103		94
5	Health Behaviors	Tobacco Use, Diet/Exercise, Alcohol Use, Sexual Activity	98		73
6	Clinical Care	Access to care / Quality of Care	66		102
7	Social & Economic Factors	Education, Employment, Income, Family/Social support, Community Safety	103		96
8	Physical Environment	Environmental quality	102		20
KS Rural 28 Norm includes the following counties: Atchison, Brown, Chautauqua, Clay, Dickinson, Doniphan, Elk, Ellsworth, Finney, Geary, Harvey, Haskell, Jackson, Jefferson, Labette, Mcpherson, Marion, Meade, Montgomery, Morris, Nemaha, Neosho, Ottawa, Pratt, Rice, Seward, Stevens, and Wilson.					
http://www.countyhealthrankings.org , released 2022					

PSA Secondary Research:

When studying community health, it's important to document health data by topical areas for primary service area (PSA). Below is a summary of key findings organized by subject area.

Note: Each Tab has been trended to reflect County trends to NORM.

Health Indicators - Secondary Research
TAB 1. Demographic Profile
TAB 2. Economic Profile
TAB 3. Educational Profile
TAB 4. Maternal and Infant Health Profile
TAB 5. Hospital / Provider Profile
TAB 6. Behavioral / Mental Health Profile
TAB 7. High-Risk Indicators & Factors
TAB 8. Uninsured Profile
TAB 9. Mortality Profile
TAB 10. Preventative Quality Measures

Tab 1: Demographic Profile

Understanding population and household make-up is vital to start CHNA evaluation.

Tab	Demographic - Health Indicators	Montgomery Co. KS	Trend	State of KS	KS Rural 28 Norm	Source
1	a Population estimates, July 1, 2021, (V2021)	31,156		2,913,314	14,405	People Quick Facts
	b Population, percent change - April 1, 2020 (estimates base) to July 1, 2021, (V2021)	-1.0%			-0.6%	People Quick Facts
	d Persons under 5 years, percent, 2021	5.9%		6.4%	6.3%	People Quick Facts
	e Persons 65 years and over, percent, 2021	20.3%		16.3%	19.7%	People Quick Facts
	f Female persons, percent, 2021	50.3%		50.2%	49.6%	People Quick Facts
	g White alone, percent, 2021	84.5%		86.3%	91.7%	People Quick Facts
	h Black or African American alone, percent, 2021	5.3%		6.1%	2.6%	People Quick Facts
	i Hispanic or Latino, percent, 2021	7.2%		12.2%	11.8%	People Quick Facts
	j Language other than English spoken at home, percent of persons age 5 years+, 2016-2020	3.7%		11.9%	9.8%	People Quick Facts
	k Living in same house 1 year ago, percent of persons age 1 year+, 2016-2020	83.0%		83.8%	87.5%	People Quick Facts
	l Children in single-parent households, percent, 2016-2020 (2022)	23.4%		29.0%	18.6%	County Health Rankings
	m Veterans, 2016-2020	2,077		176,444	947	People Quick Facts

Tab 2: Economic Profile

Monetary resources will (at times) drive health “access” and self-care.

Tab	Economic - Health Indicators	Montgomery Co. KS	Trend	State of KS	KS Rural 28 Norm	Source
2	a Per capita income in past 12 months (in 2020 dollars), 2016-2020	\$25,719		\$31,814	\$27,600	People Quick Facts
	b Persons in poverty, percent, 2021	17.8%		11.4%	11.4%	People Quick Facts
	c Housing units, July 1, 2019, (V2021)	16,440		1,288,401	6,650	People Quick Facts
	d Persons per household, 2016-2020	2.3		2.5	2.4	People Quick Facts
	e Severe housing problems, percent, 2014-2018 (2021)	13.4%		13.0%	11.4%	County Health Rankings
	f Total of All firms, 2012 (2021)	2,589		239,118	1,202	Business Quick Facts
	g Unemployment, percent, 2020 (2021)	7.3%		3.4%	4.7%	County Health Rankings
	h Food insecurity, percent, 2019 (2021)	15.8%		13.0%	12.3%	County Health Rankings
	i Limited access to healthy foods, percent, 2019 (2021)	10.2%		8.0%	9.5%	County Health Rankings
	j Long commute - driving alone, percent, 2016-2020 (2021)	18.7%		21.0%	24.0%	County Health Rankings

Tab 3: Educational Profile

Currently, school districts are providing on-site primary health screenings and basic care.

Tab	Education - Health Indicator	Montgomery Co. KS	Trend	State of KS	KS Rural 28 Norm	Source
3	a Children eligible for free or reduced price lunch, percent, 2019-2020 (2021)	66.7%		46.6%	52.9%	County Health Rankings
	b High school graduate or higher, percent of persons age 25 years+, 2015-2019	90.1%		91.0%	88.8%	People Quick Facts
	c Bachelor's degree or higher, percent of persons age 25 years+, 2015-2019	20.2%		33.4%	21.9%	People Quick Facts

Tab 4: Maternal / Infant Profile

Tracking maternal / infant care patterns are vital in understanding the foundation of family health.

Tab		Maternal/Infant - Health Indicators	Montgomery Co. KS	Trend	State of KS	KS Rural 28 Norm	Source
4	a	Percent of Births Where Prenatal Care began in First Trimester, 2018-2020 (2021)	76.3%		81.0%	79.6%	Kansas Health Matters
	b	Percentage of Premature Births, 2018-2020 (2021)	11.3%		9.8%	9.4%	Kansas Health Matters
	c	Percent of Infants up to 24 months that received full Immunizations, 2017-2018 (2021)	20.3%		71.1%	72.2%	Kansas Health Matters
	d	Percent of Births with Low Birth Weight, 2018-2020 (2021)	9.0%		7.4%	7.2%	Kansas Health Matters
	e	Percent of WIC Mothers Breastfeeding Exclusively, percent, 2020 (2021)	10.9%		13.6%	16.6%	Kansas Health Matters
	f	Percent of all Births Occurring to Teens (15-19), 2018-2020	9.4%		5.2%	6.1%	Kansas Health Matters
	g	Percent of births Where Mother Smoked During Pregnancy, 2018-2020	21.2%		8.7%	13.2%	Kansas Health Matters

#	Criteria - Vital Statistics	Mongomery Co KS	Trend	Kansas	KS Rural 28 Norm
a	Total Live Births, 2016	11.8		13.1	12.9
b	Total Live Births, 2017	10.8		12.5	12.1
c	Total Live Births, 2018	11.3		12.5	12.7
d	Total Live Births, 2019	10.1		12.1	12.1
e	Total Live Births, 2020	11.2		11.8	11.7
g	Total Live Births, 2016- 2020 - Five year Rate (per 1,000)	11.0		12.4	12.3

Source: Kansas Department of Health and Environment

Tab 5: Hospitalization and Provider Profile

Understanding provider access and disease patterns are fundamental in healthcare delivery. Listed below are several vital county statistics.

Tab		Hospital/Provider - Health Indicator	Montgomery Co. KS	Trend	State of KS	KS Rural 28 Norm	Source
5	a	Primary care physicians (Pop Coverage per) (No extenders incl.) , 2019 (2021)	3183:1		1271:1	2120:1	County Health Rankings
	b	Preventable hospital rate per 100,000, 2019 (2021) (lower the better)	3,640		3,645	4,143	County Health Rankings
	c	Patients Who Gave Their Hospital a Rating of 9 or 10 on a Scale from 0 (Lowest) to 10 (Highest)	69.0%		73.0%	77.6%	CMS Hospital Compare, Latest Release
	d	Patients Who Reported Yes, They Would Definitely Recommend the Hospital	66.0%		72.0%	76.3%	CMS Hospital Compare, Latest Release
	e	Average (Median) time patients spent in the emergency department, before leaving from the visit (mins)	103		112	116	CMS Hospital Compare, Latest Release

Tab 6: Behavioral / Mental Profile

Behavioral healthcare provides another important indicator of community health status.

Tab		Mental - Health Indicator	Montgomery Co. KS	Trend	State of KS	KS Rural 28 Norm	Source
6	a	Depression: Medicare Population, percent, 2018 (2021)	20.2%		19.8%	18.2%	Kansas Health Matters
	b	Age-adjusted Suicide Mortality Rate per 100,000 population, 2018-2020 (lower is better)	21.7		18.5	13.4	Kansas Health Matters
	c	Mental Behavioral Hospital Admission Rates per 100,000, 2018-2020	70.3		70.6	52.8	Kansas Health Matters
	k	Percent of Medicare Part D Beneficiaries Receiving Opioids Supply >10 Days 2017 (2021)	49.8%		37.8%	44.2%	Kansas Health Matters
	d	Average Number of mentally unhealthy days, 2019 (2021)	4.8		4.5	4.5	County Health Rankings

Tab 7a: Risk Indicators & Factors Profile

Knowing community health risk factors and disease patterns can aid in the understanding next steps to improve health.

Tab		High-Risk - Health Indicator	Montgomery Co. KS	Trend	State of KS	KS Rural 28 Norm	Source
7a	a	Adult obesity, percent, 2019 (2021)	41.0%		35.6%	37.3%	County Health Rankings
	b	Adult smoking, percent, 2019 (2021)	20.6%		16.8%	18.8%	County Health Rankings
	c	Excessive drinking, percent, 2019 (2021)	17.8%		20.0%	18.7%	County Health Rankings
	d	Physical inactivity, percent, 2019 (2021)	32.2%		26.7%	31.4%	County Health Rankings
	e	# of Physically unhealthy days, 2019	4.1		3.6	3.8	County Health Rankings
	f	Sexually transmitted infections (chlamydia), rate per 100,000 - 2018 (2021)	515.3		524.7	395.5	County Health Rankings

Tab 7b: Chronic Risk Profile

Tab		Chronic - Health Indicator	Montgomery Co. KS	Trend	State of KS	KS Rural 28 Norm	Source
7b	a	Hypertension: Medicare Population, 2018 (2021)	59.8%		55.9%	56.8%	Kansas Health Matters
	b	Hyperlipidemia: Medicare Population, 2018 (2021)	41.1%		43.9%	40.7%	Kansas Health Matters
	c	Heart Failure: Medicare Population, 2018 (2021)	14.1%		13.5%	14.7%	Kansas Health Matters
	d	Chronic Kidney Disease: Medicare Pop, 2018 (2021)	20.5%		22.5%	20.9%	Kansas Health Matters
	e	COPD: Medicare Population, 2018 (2021)	12.8%		11.9%	12.5%	Kansas Health Matters
	f	Atrial Fibrillation: Medicare Population, 2018 (2021)	7.9%		8.9%	8.9%	Kansas Health Matters
	g	Cancer: Medicare Population, 2018 (2021)	7.2%		8.2%	7.7%	Kansas Health Matters
	h	Osteoporosis: Medicare Population, 2018 (2021)	3.9%		6.4%	5.9%	Kansas Health Matters
	i	Asthma: Medicare Population, 2018 (2021)	3.1%		4.2%	3.5%	Kansas Health Matters
	j	Stroke: Medicare Population, 2018 (2021)	3.3%		3.2%	2.9%	Kansas Health Matters

Tab 8: Uninsured Profile and Community Benefit

Based on state estimations, the number of insured is documented below. Also, the amount of charity care (last three years of free care) from area providers is trended below.

Tab	Coverage - Health Indicator	Montgomery Co. KS	Trend	State of KS	KS Rural 28 Norm	Source
8	a Uninsured, percent, 2019 (2021)	13.3%		10.7%	12.4%	County Health Rankings

	Coffeyville Regional Medical Center	YR 2019	YR 2020	YR 2021
1	Bad Debt (Gross Charges)	\$2,920,682	\$2,837,281	\$2,962,360
2	Charity Care (Gross Charges)	\$2,003,200	\$1,952,660	\$2,285,601

Tab 9: Mortality Profile

The leading causes of county deaths from Vital Statistics are listed below.

Tab	Mortality - Health Indicator	Montgomery Co. KS	Trend	State of KS	KS Rural 28 Norm	Source
9	a Life Expectancy, 2017-2019 (2021)	74.9		78.5	77.6	Kansas Health Matters
	b Age-adjusted Cancer Mortality Rate per 100,000 population, 2018-2020 (lower is better)	156.4		151.4	163.0	Kansas Health Matters
	c Age-adjusted Heart Disease Mortality Rate per 100,000 population, 2018-2020 (lower is better)	254.4		162.0	172.7	Kansas Health Matters
	d Age-adjusted Chronic Lower Respiratory Disease Mortality Rate per 100,000, 2018-2020 (Lower is better)	254.4		157.2	172.6	Kansas Health Matters
	e Alcohol-impaired driving deaths, percent, 2016-2020 (2021)	12.8%		19.4%	20.5%	County Health Rankings

Tab 10: Preventive Quality Measures Profile

The following table reflects future health of the county. This information also is an indicator of community awareness of preventative measures.

Tab	Preventative - Health Indicator	Montgomery Co. KS	Trend	State of KS	KS Rural 28 Norm	Source
10	a Access to exercise opportunities, percent, 2021	64.2%		73.3%	46.5%	County Health Rankings
	b Adults with diabetes, monitoring, percent, 2019	11.4%		9.7%	10.4%	County Health Rankings
	c Mammography annual screening, percent, 2019	36.0%		46.0%	40.8%	County Health Rankings
	d Adults that report having visited a doctor for a routine check-up within the past year, percent, 2019	75.6%		NA	74.7%	Kansas Health Matters
	e Adults who visited a dentist or dental clinic in the past year, percent, 2018	55.2%		NA	61.8%	Kansas Health Matters
	f Percent Annual Check-Up Visit with Eye Doctor	NA		NA	NA	TBD

PSA Primary Research:

For each CHNA Wave # 4 evaluation, a community stakeholder survey has been created and administered to collect current healthcare information for Montgomery Co KS.

Chart #1 – Montgomery County, KS Online Feedback Response (N=89)

Montgomery County KS - CHNA YR 2022			
For reporting purposes, are you involved in or are you a ...? (Multiple)	Montgomery Co KS N=89	Trend	Wave 4 Norms N= 7,198
Business / Merchant	3.2%		11.9%
Community Board Member	5.3%		10.5%
Case Manager / Discharge Planner	1.1%		1.0%
Clergy	3.2%		1.5%
College / University	2.1%		3.2%
Consumer Advocate	0.0%		1.7%
Dentist / Eye Doctor / Chiropractor	0.0%		0.9%
Elected Official - City/County	0.0%		2.3%
EMS / Emergency	3.2%		2.6%
Farmer / Rancher	8.4%		7.8%
Hospital / Health Dept	32.6%		21.1%
Housing / Builder	2.1%		0.9%
Insurance	2.1%		1.4%
Labor	1.1%		2.7%
Law Enforcement	1.1%		1.4%
Mental Health	0.0%		2.2%
Other Health Professional	14.7%		12.4%
Parent / Caregiver	10.5%		18.4%
Pharmacy / Clinic	2.1%		2.5%
Media (Paper/TV/Radio)	0.0%		0.6%
Senior Care	0.0%		3.8%
Teacher / School Admin	3.2%		7.6%
Veteran	1.1%		3.6%
Other (please specify)	3.2%		8.9%
TOTAL	89		6692
Norms: KS Counties: Atchinson, Brown, Dickinson, Jackson, Marion, Montgomery, Cowley, Russell, Trego, Harper, Miami, Johnson, Nemaha, Ellis, Pawnee, Gove, Sheridan, Kiowa, Pratt, Ellsworth, Republic; MO Counties: Carroll, Caldwell, Clinton, Daviess, DeKalb, Lewis, Marion, Monroe, Pike, Ralls, Ray, Shelby Co; IA Counties: Fremont, Page, Appanoose, Carroll, Jasper, Clayton; NE Counties: Custer & Furnis.			

Chart #2 - Quality of Healthcare Delivery Community Rating

Montgomery County KS - CHNA YR 2022			
How would you rate the "Overall Quality" of healthcare delivery in our community?	Montgomery Co KS N=89	Trend	Wave 4 Norms N=7,198
Top Box %	19.1%		26.2%
Top 2 Boxes %	71.9%		68.7%
Very Good	19.1%		26.2%
Good	52.8%		42.6%
Average	25.8%		24.5%
Poor	2.2%		5.3%
Very Poor	0.0%		1.5%
Valid N	89		7,150
Norms: KS Counties: Atchinson, Brown, Dickinson, Jackson, Marion, Montgomery, Cowley, Russell, Trego, Harper, Miami, Johnson, Nemaha, Ellis, Pawnee, Gove, Sheridan, Kiowa, Pratt, Ellsworth, Republic; MO Counties: Carroll, Caldwell, Clinton, Daviess, DeKalb, Lewis, Marion, Monroe, Pike, Ralls, Ray, Shelby Co; IA Counties: Fremont, Page, Appanoose, Carroll, Jasper, Clayton; NE Counties: Custer & Furnis.			

Chart #3 – Overall Community Health Quality Trend

Montgomery County KS - CHNA YR 2022			
When considering "overall community health quality", is it...	Montgomery Co KS N=89	Trend	Wave 4 Norms N=7,198
Increasing - moving up	35.9%		42.8%
Not really changing much	47.4%		45.7%
Decreasing - slipping	16.7%		11.5%
Valid N	89		6,471
Norms: KS Counties: Atchinson, Brown, Dickinson, Jackson, Marion, Montgomery, Cowley, Russell, Trego, Harper, Miami, Johnson, Nemaha, Ellis, Pawnee, Gove, Sheridan, Kiowa, Pratt, Ellsworth, Republic; MO Counties: Carroll, Caldwell, Clinton, Daviess, DeKalb, Lewis, Marion, Monroe, Pike, Ralls, Ray, Shelby Co; IA Counties: Fremont, Page, Appanoose, Carroll, Jasper, Clayton; NE Counties: Custer & Furnis.			

Chart #4 – Re-evaluate Past Community Health Needs Assessment Needs

Montgomery Co KS - CHNA YR 2022					
Past CHNA Unmet Needs Identified		Ongoing Problem		Pressing	
Rank	Ongoing Problem Area	Votes	%	Trend	Rank
1	Mental Health (Diagnosis, Treatment, Aftercare, Providers)	98	10.3%		1
2	Child Care	88	9.3%		2
3	Affordable Healthcare	76	8.0%		4
4	Drug / Substance Abuse	68	7.2%		3
5	Dental Care	62	6.5%		6
6	Housing (Safe & Affordable)	61	6.4%		5
7	Underinsured / Uninsured	53	5.6%		7
8	Preventative Health / Wellness	52	5.5%		8
9	Poverty	51	5.4%		11
10	Awareness of Healthcare Services	48	5.1%		12
11	Access to Specialists (DERM, Cancer, PULM, AUD)	43	4.5%		10
12	Food Insecurity	37	3.9%		15
13	Public Transportation	36	3.8%		16
14	"Owning Your Health" (Apathy)	35	3.7%		9
15	Health Education	32	3.4%		17
16	Economic Development	31	3.3%		14
17	Holistic Care	30	3.2%		19
18	Collaboration of Healthcare Services	26	2.7%		13
19	Eye Care	21	2.2%		18
Totals		948	100.0%		

Chart #5 - Community Health Needs Assessment “Causes of Poor Health”

Montgomery County KS - CHNA YR 2022			
In your opinion, what are the root causes of "poor health" in our community?	Montgomery Co KS N=89	Trend	Wave 4 Norms N=7,198
Chronic disease prevention	15.6%		11.0%
Lack of health & Wellness Education	18.0%		14.0%
Lack of Nutrition / Exercise Services	10.7%		10.6%
Limited Access to Primary Care	5.9%		6.4%
Limited Access to Specialty Care	8.3%		8.3%
Limited Access to Mental Health Assistance	17.6%		18.5%
Family assistance programs	3.4%		5.7%
Lack of health insurance	10.7%		14.2%
Neglect	9.8%		11.4%
Total Votes	89		11,976
Norms: KS Counties: Atchinson, Brown, Dickinson, Jackson, Marion, Montgomery, Cowley, Russell, Trego, Harper, Miami, Johnson, Nemaha, Ellis, Pawnee, Gove, Sheridan, Kiowa, Pratt, Ellsworth, Republic; MO Counties: Carroll, Caldwell, Clinton, Daviess, DeKalb, Lewis, Marion, Monroe, Pike, Ralls, Ray, Shelby Co; IA Counties: Fremont, Page, Appanoose, Carroll, Jasper, Clayton; NE Counties: Custer & Furnis.			

Chart #6 – Community Rating of HC Delivery Services (Perceptions)

Montgomery County KS - CHNA YR 2022	Montgomery Co KS N=89			Wave 4 Norms N=7,198	
How would our community rate each of the following?	Top 2 boxes	Bottom 2 boxes	Trend	Top 2 boxes	Bottom 2 boxes
Ambulance Services	93.4%	0.0%		80.2%	5.2%
Child Care	23.3%	23.3%		41.7%	17.4%
Chiropractors	71.2%	8.5%		70.0%	6.1%
Dentists	55.7%	14.8%		69.6%	10.6%
Emergency Room	86.9%	3.3%		71.6%	9.3%
Eye Doctor/Optomtrist	75.4%	4.9%		73.8%	7.2%
Family Planning Services	27.6%	22.4%		36.8%	20.3%
Home Health	81.7%	0.0%		53.7%	11.2%
Hospice	72.9%	1.7%		62.6%	8.8%
Telehealth	33.9%	22.0%		48.7%	13.4%
Inpatient Services	78.0%	3.4%		74.5%	6.3%
Mental Health	8.6%	53.4%		25.6%	38.1%
Nursing Home/Senior Living	35.6%	18.6%		52.2%	14.8%
Outpatient Services	71.2%	1.7%		73.5%	4.9%
Pharmacy	81.4%	0.0%		85.5%	2.7%
Primary Care	64.4%	1.7%		75.4%	6.3%
Public Health	35.6%	15.3%		57.3%	9.4%
School Health	41.4%	8.6%		59.9%	8.3%
Visiting Specialists	53.4%	15.5%		64.3%	9.7%

Chart #7 – Community Health Readiness

Montgomery County KS - CHNA YR 2022		Bottom 2 boxes	
Community Health Readiness is vital. How would you rate each of the following? (% Poor / Very Poor)	Montgomery Co KS N=89	Trend	Wave 4 Norms N=7,198
Behavioral / Mental Health	25.2%		36.9%
Emergency Preparedness	1.6%		9.8%
Food and Nutrition Services/Education	7.1%		17.0%
Health Screenings (as asthma, hearing, vision, scoliosis)	5.5%		12.0%
Prenatal/Child Health Programs	4.8%		14.0%
Substance Use/Prevention	24.4%		36.6%
Suicide Prevention	23.2%		39.1%
Violence Prevention	24.2%		36.4%
Women's Wellness Programs	4.8%		19.4%
Norms: KS Counties: Atchinson, Brown, Dickinson, Jackson, Marion, Montgomery, Cowley, Russell, Trego, Harper, Miami, Johnson, Nemaha, Ellis, Pawnee, Gove, Sheridan, Kiowa, Pratt, Ellsworth, Republic; MO Counties: Carroll, Caldwell, Clinton, Daviess, DeKalb, Lewis, Marion, Monroe, Pike, Ralls, Ray, Shelby Co; IA Counties: Fremont, Page, Appanoose, Carroll, Jasper, Clayton; NE Counties: Custer & Furnis.			

Chart #8a – Healthcare Delivery “Outside our Community”

Montgomery County KS - CHNA YR 2022				Specialties:	
In the past 2 years, did you or someone you know receive HC outside of our community?	Montgomery Co KS N=89	Trend	Wave 4 Norms N=7,198	Spec	Cts
Yes	50.0%		72.7%	PRIM	3
No	50.0%		27.3%	CARD	2
Norms: KS Counties: Atchinson, Brown, Dickinson, Jackson, Marion, Montgomery, Cowley, Russell, Trego, Harper, Miami, Johnson, Nemaha, Ellis, Pawnee, Gove, Sheridan, Kiowa, Pratt, Ellsworth, Republic; MO Counties: Carroll, Caldwell, Clinton, Daviess, DeKalb, Lewis, Marion, Monroe, Pike, Ralls, Ray, Shelby Co; IA Counties: Fremont, Page, Appanoose, Carroll, Jasper, Clayton; NE Counties: Custer & Furnis.				DERM	2
				EMER	2
				VETS	2

Chart #8b – Healthcare Delivery “Outside our Community”

Montgomery County KS - CHNA YR 2022			
Access to care is vital. Are there enough providers / staff available at the right times to care for you and our community?	Montgomery Co KS N=89	Trend	Wave 4 Norms N=7,198
Yes	36.8%		57.7%
No	63.2%		42.3%
Norms: KS Counties: Atchinson, Brown, Dickinson, Jackson, Marion, Montgomery, Cowley, Russell, Trego, Harper, Miami, Johnson, Nemaha, Ellis, Pawnee, Gove, Sheridan, Kiowa, Pratt, Ellsworth, Republic; MO Counties: Carroll, Caldwell, Clinton, Daviess, DeKalb, Lewis, Marion, Monroe, Pike, Ralls, Ray, Shelby Co; IA Counties: Fremont, Page, Appanoose, Carroll, Jasper, Clayton; NE Counties: Custer & Furnis.			

Chart #9 – What HC topics need to be discussed in future Town Hall Meeting

Montgomery County KS - CHNA YR 2022			
What needs to be discussed further at our CHNA Town Hall meeting?	Montgomery Co KS N=89	Trend	Wave 4 Norm= 7,198
Abuse/Violence	4.3%		4.1%
Alcohol	4.3%		3.8%
Alternative Medicine	3.8%		3.0%
Breast Feeding Friendly Workplace	3.1%		1.6%
Cancer	7.4%		4.1%
Care Coordination	1.5%		2.3%
Diabetes	1.5%		2.7%
Drugs/Substance Abuse	1.3%		5.6%
Family Planning	2.8%		2.2%
Heart Disease	6.6%		3.0%
Lack of Providers/Qualified Staff	1.8%		3.8%
Lead Exposure	3.8%		1.1%
Mental Illness	1.8%		7.2%
Neglect	2.0%		2.8%
Nutrition	5.1%		4.3%
Obesity	0.5%		4.3%
Occupational Medicine	2.0%		0.9%
Ozone (Air)	3.3%		1.3%
Physical Exercise	7.4%		4.3%
Poverty	0.8%		3.7%
Preventative Health / Wellness	0.3%		3.7%
Respiratory Disease	3.8%		1.2%
Sexually Transmitted Diseases	4.6%		2.2%
Smoke-Free Workplace	4.3%		1.4%
Suicide	2.3%		5.1%
Teen Pregnancy	5.9%		3.2%
Telehealth	1.5%		2.3%
Tobacco Use	2.6%		2.2%
Transportation	1.5%		2.6%
Vaccinations	4.1%		3.4%
Water Quality	1.3%		2.0%
Health Literacy	1.3%		2.9%
Other (please specify)	1.0%		1.5%
TOTAL Votes	89		21,876

IV. Inventory of Community Health Resources

[VVV Consultants LLC]

YR 2019 Inventory of Healthcare Services - Coffeyville Regional PSA

Cat	Healthcare Services Offered in County: Yes / No	Hospital	Health Dept	Other
Clinic	Primary Care	yes	no	yes
Hosp	Alzheimer Center	no	no	yes
Hosp	Ambulatory Surgery Centers	yes	no	no
Hosp	Arthritis Treatment Center	no	no	no
Hosp	Bariatric / Weight Control Services (Support Only)	yes	no	no
Hosp	Birthing / LDR / LDRP Room	yes	no	no
Hosp	Breast Cancer Services	yes	no	no
Hosp	Burn Care Services	no	no	no
Hosp	Cardiac Rehabilitation	yes	no	no
Hosp	Cardiac Surgery	no	no	no
Hosp	Cardiology Services	yes	no	no
Hosp	Case Management	yes	no	yes
Hosp	Chaplaincy / Pastoral Care Services	yes	yes	yes
Hosp	Chemotherapy	yes	no	no
Hosp	Colonoscopy	yes	no	no
Hosp	Crisis Prevention	yes	no	yes
Hosp	CT Scanner	yes	no	no
Hosp	Diagnostic Radioisotope Facility	yes	no	no
Hosp	Diagnostic / Invasive Catheterization	yes	no	no
Hosp	Electron Beam Computed Tomography (EBCT)	no	no	no
Hosp	Enrollment Assistance Services	yes	no	yes
Hosp	Extracorporeal Shock Wave Lithotripter (ESWL)	no	no	no
Hosp	Fertility Clinic	yes	no	no
Hosp	Full Field Digital Mammography (FFDM)	yes	no	no
Hosp	Genetic Testing / Counseling	no	no	no
Hosp	Geriatric Services	yes	no	yes
Hosp	Heart Services	yes	no	no
Hosp	Hemodialysis	yes	no	yes
Hosp	HIV / AIDS Services	no	no	no
Hosp	Image-Guided Radiation Therapy (IGRT)	yes	no	no
Hosp	Inpatient Acute Care - Hospital Services	yes	no	no
Hosp	Intensity-Modulated Radiation Therapy (IMRT) 161	no	no	no
Hosp	Intensive Care Unit	yes	no	no
Hosp	Intermediate Care Unit	no	no	no
Hosp	Interventional Cardiac Catheterization	no	no	no
Hosp	Isolation Room	yes	no	yes
Hosp	Kidney Services	yes	no	no
Hosp	Liver Services	yes	no	no
Hosp	Lung Services	yes	no	no
Hosp	Magnetic Resonance Imaging (MRI)	yes	no	no
Hosp	Mammograms	yes	no	no
Hosp	Mobile Health Services (PET Scan)	yes	no	no
Hosp	Multislice Spiral Computed Tomography (<64 Slice CT)	no	no	no
Hosp	Multislice Spiral Computed Tomography (64+ Slice CT)	yes	no	no
Hosp	Neonatal Services	no	no	no
Hosp	Neurological Services	yes	no	no
Hosp	Obstetrics Services	yes	no	no
Hosp	Occupational Health Services	yes	no	yes
Hosp	Oncology Services	yes	no	no
Hosp	Orthopedic Services	yes	no	no
Hosp	Outpatient Surgery	yes	no	no
Hosp	Pain Management	yes	no	no
Hosp	Palliative Care Program	yes	no	yes
Hosp	Pediatric Services	yes	no	yes
Hosp	Physical Rehabilitation	yes	no	yes
Hosp	Positron Emission Tomography (PET)	yes	no	no
Hosp	Positron Emission Tomography / CT (PET / CT)	yes	no	no
Hosp	Psychiatric Services	no	no	yes
Hosp	Radiology, Diagnostic	yes	no	no
Hosp	Radiology, Therapeutic	yes	no	no

YR 2019 Inventory of Healthcare Services - Coffeyville Regional PSA

Cat	Healthcare Services Offered in County: Yes / No	Hospital	Health Dept	Other
Hosp	Reproductive Health	yes	yes	no
Hosp	Robotic Surgery	no	no	no
Hosp	Shaped Beam Radiation System 161 (Radiation Onc Therapy)	yes	no	no
Hosp	Single Photon Emission Computerized Tomography	yes	no	no
Hosp	Sleep Center	no	no	no
Hosp	Social Work Services	yes	yes	yes
Hosp	Sports Medicine	yes	no	no
Hosp	Stereotactic Radiosurgery	no	no	no
Hosp	Swing Bed Services	yes	no	yes
Hosp	Transplant Services	no	no	no
Hosp	Trauma Center - Level IV	no	no	no
Hosp	Ultrasound	yes	no	no
Hosp	Women's Health Services	yes	yes	yes
Hosp	Wound Care	yes	no	yes
SR	Adult Day Care Program	no	no	yes
SR	Assisted Living	no	no	yes
SR	Home Health Services	yes	yes	yes
SR	Hospice	yes	yes	yes
SR	Long-Term Care	no	no	yes
SR	Nursing Home Services	no	no	yes
SR	Retirement Housing	no	no	yes
SR	Skilled Nursing Care	no	no	yes
SR	Swing Bed	yes	no	no
ER	Emergency Services	yes	no	no
ER	Urgent Care Center	no	no	no
ER	Ambulance Services	yes	no	yes
SERV	Alcoholism-Drug Abuse	no	no	yes
SERV	Blood Donor Center	no	no	no
SERV	Chiropractic Services	no	no	yes
SERV	Complementary Medicine Services	no	no	no
SERV	Dental Services	no	no	yes
SERV	Fitness Center	no	no	yes
SERV	Health Education Classes	yes	yes	yes
SERV	Health Fair	yes	yes	yes
SERV	Health Information Center	yes	no	yes
SERV	Health Screenings	yes	yes	yes
SERV	Meals on Wheels	no	no	yes
SERV	Nutrition Programs	yes	yes	yes
SERV	Patient Education Center	yes	no	no
SERV	Support Groups	yes	yes	yes
SERV	Teen Outreach Services	yes	no	yes
SERV	Tobacco Treatment / Cessation Program	yes	no	yes
SERV	Transportation to Health Facilities	no	no	yes
SERV	Wellness Program	yes	no	yes

Providers serving Montgomery Co Residents - 2019

Number of FTE Providers Working in Montgomery County	MD / DO / PA Office in County	FTE Visiting DRs*
Primary Care:		
Family Practice	9.7	0.0
Internal Medicine / Geriatrics	0.7	0.0
Obstetrics / Gynecology	3.8	0.0
Pediatrics	1.7	0.0
Medicine Specialists:		
Allergy / Immunology	0.0	0.0
Cardiology	0.6	0.3
Dermatology	0.0	0.0
Endocrinology	0.0	0.0
ENT	0.0	0.0
Gastroenterology	1.0	0.0
Oncology	0.2	0.3
Infectious Diseases	0.0	0.0
Nephrology	0.0	0.1
Neurology	0.0	0.0
Psychiatry	1.0	0.0
Pulmonary	0.0	0.0
Rheumatology	0.0	0.0
Surgery Specialists:		
General Surgery / Colon / Oral	2.0	0.0
Neurosurgery	0.2	0.6
Ophthalmology	1.0	0.0
Orthopedics	1.5	0.0
Otolaryngology	0.0	0.1
Plastic / Reconstructive	0.0	0.0
Thoracic / Cardiovascular / Vascular	0.0	0.0
Urology	1.2	0.0
Hospital Based:		
Anesthesia / Pain	3.0	0.0
Emergency	7.0	0.0
Hospitalist	3.0	0.0
Radiology / Oncology	2.0	0.2
Pathology	1.0	0.0
Neonatal / Perinatal	0.0	0.0
Pain Management	4.0	0.0
Physical Medicine / Rehab	0.0	0.0
Occupational Medicine	0.0	0.0
Podiatry	0.0	0.1
Chiropractor	0.0	0.0
Optometrist	0.0	0.0
Women's Health	1.0	
Wound Care	4.0	0.0
TOTALS	49.6	1.6

*Total FTE specialists serving community whose office outside PSA.

Visiting Specialists to Coffeyville Regional Medical Center - 2022

Specialty	Provider Name		Group / City	Days in Clinic per Month
Cardiology	Dr. Andersen Mehrle	MD	OP Services - 1400 W 4th Street - Coffeyville	2
ENT*	Dr. Charles Holland, Jr.	MD	1400 W 4th Street - Coffeyville	1
Nephrology	Dr. Paul Maraj	MD	OP Services - 1400 W 4th Street - Coffeyville	1
Neurosurgery	Dr. Gery Hsu	MD	1400 W 4th Street - Coffeyville	6
Medical Oncology	Dr. Akinola Ogundipe	MD	Tatman Cancer Center - 1400 W 4th Street - Coffeyville	4
Radiation Oncology	Dr. Nathan Uy	MD	Jerry Marquette Radiation Oncology Ctr - 1400 W 4th Street - Coffeyville	4

*For Surgery Only

Montgomery County, Kansas Area Healthcare Services

Emergency Numbers

Police/Sheriff	911
Fire	911
Ambulance	911

Non-Emergency Numbers

Montgomery County Sheriff	(620) 251-3500
Montgomery County Ambulance Services	(620) 332-2528

A Better Choice

3007 E. Central
Wichita, KS 67214
(316) 685-5757

Accessible Home Health

200 ARCO Place, P.O. Box 147, Ste. 103
Independence, KS 67301
(620) 331-0811

Active Partners**Home Health Care**

415 Fruitland, P.O. Box 688
Independence, KS 67301
(620) 332-8584

In-Home Services

415 Fruitland, P.O. Box 688
Independence, KS 67301
(620) 332-8584

Addiction Recovery Center

1105 S. Hugh
Frontenac, KS 66763
(620) 235-1600

Adopt-A-Family (Community National Bank)

125 N. Penn, P.O. Box 687
Independence, KS 67301
(620) 331-3100

Adopt Kansas Kids

3545 S.W. 5th St.
Topeka, KS 66606
(785) 274-3100

AI-Anon

(888) 425-2666
Independence (See Episcopal Church)

Alcoholics Anonymous**Caney**

114 N. Main Caney, KS 67333
(918) 924-2933

Cedar Vale

608 Maple
Cedar Vale, KS 67024

Coffeyville

Martin & Union
Coffeyville, KS 67333
(620) 251-1287

Fredonia

807 Jefferson St.
Fredonia, KS 66736

Howard

114 N. Pine
Howard, KS
(620) 374-2809/(620) 374-4035

Independence

213 W. Oak
Independence, KS 67301
(620) 332-9294

Neodesha

Episcopal Church
702 Osage
Neodesha, KS 66757

Parsons

3101 Morgan Ave.
Parsons, KS 67357

Sedan

Pleasant Valley Manor
623 E. Elm St.
Sedan, KS 67361
(888) 423-8154

Alexandra's House

638 W. 39th Terr.
Kansas City, MO 64111
(816) 931-2539/(816) 898-2539 (Urgent Needs Only)

Allen County Regional Hospital

3066 N. Kentucky
Iola, KS 66749
(620) 365-1000

Altamont Fire Department

500 S. Huston St.
Altamont, KS 67330
(620) 784-5612

Altamont Police Department

407 Huston St.
Altamont, KS 67330
(620) 784-5582

Altamont Public Library

407 Huston Ave.
Altamont, KS 67330
(620) 784-5530

Altoona Public Library

714 Main St.
Altoona, KS 66710
(620) 568-6645

Altoona Over 50 Center

721 Main
Altoona, KS 66710
(620) 568-3780

Altoona Volunteer Fire Department

125 W. 7th
Altoona, KS 66710
(620) 568-2777

Always There Home Care

1475 S. 10th, Ste. A
Independence, KS 67301
(620) 331-0070

American Legion**Caney**

Ernest Brown, KS Post 138
1607 HWY. 75
Caney, KS 67333
(620) 879-2173

Cedar Vale

Kemp-Barnes, KS Post 201
706 Cleveland St.
Cedar Vale, KS 67024

Coffeyville

Coffeyville, KS Post 20
811 W. 12th, P.O. Box 186
Coffeyville, KS 67337
(620) 251-5186

Fredonia

Charles Walters, KS Post 8
10283 Harper Rd.
Fredonia, KS 66736

Howard

Carter-Rader, KS Post 149
100 W. Washington St.
Howard, KS 67349

Independence

Harold R. Andrews, KS Post 139
1531 W. Main
Independence, KS 67301
(620) 331-5180

Moline

Ferguson-Spease, KS Post 388
222 N. Main
Moline, KS 67353

Sedan

Doy Moore, KS Post 141
P.O. Box 211
Sedan, KS 67361

American Medical Equipment

1401 W. 4th, P.O. Box 1146
Coffeyville, KS 67337
(620) 251-8257

American Red Cross – Montgomery County

128 W. 8th
Coffeyville, KS 67337
(888) 460-1050

Angels Care Home Health

622 Main St.
Neodesha, KS 66757
(620) 325-3841

Another Chance Thrift Shop

408 E. 1st Ave.
Caney, KS
(620) 879-5266

Apollo Services

600 Main St.
Parsons, KS 37657
(620) 423-0274

Apria Health Care

900 W. Myrtle, Ste. 100
Independence, KS 67301
(620) 331-5305

Area Agency on Aging (Southeast Kansas)

1 W. Ash
Chanute, KS 66720-1010
620-431-2980/(800) 794-2440

Arkansas City Public Library

120 E. 5th Ave.
Arkansas City, KS 67005
(620) 442-1280

Asbury Village

3800 Asbury Dr.
Coffeyville, KS 67337
(620) 251-6270

Ash Youth Center

1501 N. 10th St.
Independence, KS 67301
(620) 331-0260

Assisted Living at Windsor Place

106 Tyler Blvd. & 2904 W. 8th
Coffeyville, KS 67337
(620) 251-0214/(620) 251-6538

Assistive Technology for Kansans

110 South 18th, P.O. Box 957
Parsons, KS 67357
(620) 421-6551/(800) 526-3648

Associate Church of Caney

Caney, KS 67333
(620) 306-4624

Atmos Energy

1509 W. Maple
Independence, KS 67301
(620) 331-1547/(888) 442-1313/(877) 842-8737

B&E Cab

Independence
(620) 331-1580

Bartlett Fire Department

507 Main St.
Bartlett, KS 67332
(620) 226-3400

Beacon (The)

525 E. 6th St.
Fort Scott, KS 66701
(620) 223-6869

Benedict Fire Department
(620) 698-2777

Big Brothers/Big Sisters

Bikers Against Child Abuse
P.O. Box 18744
Pittsburg, KS 66762
(620) 404-9111

Boy Scouts of America
1555 E. 2nd St.
Wichita, KS 67214
(316) 264-3386

Boys and Girls Club
615 Ellis
Coffeyville, KS 67337
(620) 870-9181

Bradford Place
621 S. 2nd St.
Independence, KS 67301
(620) 331-2260

Buffalo Fire Department
Buffalo, KS
(620) 537-8788

Buffalo Senior Center
412 Main St.
Buffalo, KS
(620) 537-8700

Bureau of Vital Statistics
900 SW Jackson, 1st Floor, Room #151
Topeka, KS 66612
(785) 296-1400

Bus Tickets – Montgomery County
(620) 251-9600

Caney Fire Department
100 W. 4th Ave.
Caney, KS 67333
(620) 879-2141

Candlerock
10341 Jewell Rd.
Fredonia, KS 66736
(620) 378-7248

Candlerock Care
501 Cedar St.
Cedar Vale, KS 67024
(620) 758-5026

Caney Early Care and Education Center
601 South High
Caney, KS 67333
(620) 879-2748

Caney City Library
100 N. Ridgeway
Caney, KS 67333
(620) 879-5341

Caney Nursing Center
615 S. High
Caney, KS 67333
(620) 365-8008

Caney Police Department
201 S. State St, P.O. Box 129
Caney, KS 67333
(620) 879-2141

Caring Pregnancy Options
2041 S.W. McAlister
Topeka, KS 66604
(785) 272-3316

CASA of the 31st Judicial District (Allen, Neosho, Wilson, & Woodson Counties)
Allan County Court House, Room B
1 North Washington
Iola, KS 66749
(620) 365-1448

Catholic Charities
320 S. Broadway
Pittsburg, KS 66762
(620) 231-5300

Catholic Social Service
425 N. Topeka
Wichita, KS 67202
(316) 264-8344

Cedar Vale Memorial Library
608 Cedar St., P.O. Box 369
Cedar Vale, KS 67024
(620) 758-2598

Cedar Vale Police Department
702 Cedar St.
Cedar Vale, KS 67024
(620) 758-2951

Celebrate Recovery
Cherryvale
717 E. 6th (*First Southern Baptist Church*)
Cherryvale, KS
(620) 331-2444

Fredonia
402 N. 8th
Fredonia, KS 66736
(800) 522-4700

Independence
3001 S. 10th (*Community Christian Church*)
Independence, KS 67301
(620) 331-2309
801 W. Chestnut (*Crystalbrook Church*)
Independence, KS 67301

Tyro

301 S. Market (Tyro Christian Church)
Tyro, KS 67364
(620) 289-4415

Chamber of Commerce (See City)**Coffeyville****Fredonia****Independence****Neodesha****Chanute Public Library**

111 N. Lincoln Ave.
Chanute, KS 66720
(620) 431-3820

**Chautauqua County Council on Aging
(Chautauqua County Health Department)**

215 North Chautauqua
Sedan, KS 67361
(620) 725-3308

Chautauqua County Attorney

218 N. Montgomery, P.O. Box 306
Sedan, KS 67361
(620) 725-5876

Chautauqua County Court Services

P.O. Box 306
Sedan, KS 67361
(620) 725-5871

Chautauqua County Health Department

215 N. Chautauqua
Sedan, KS 67361
(620) 725-5850/(620) 725-3173

Chautauqua County Sheriff Department

215 N. Chautauqua
Sedan, KS 67361 (620) 725-3108

Chautauqua Food Pantry (First Baptist Church)

216 N. Chautauqua St.
Sedan, KS 67361
(620) 725-5399

Cherokee County Health Department

110 E. Walnut, P.O. Box 107
Columbus, KS 66725
(620) 429-3087

Cherryvale Center Apartments

807 E. 7th St.
Cherryvale, KS 67335
(620) 336-3312

Cherryvale Diploma Center

218 West Main
Cherryvale, KS 67335
(620) 336-2530/(877) 336-2530

Cherryvale Family Medicine

203 W. Main
Cherryvale, KS 67335
(620) 336-2131

Cherryvale Fire Department

116 S. Neosho St.
Cherryvale, KS 67335
(620) 336-2121

Cherryvale Housing Authority

621 W 4th St.
Cherryvale, KS 67335 (620) 336-3939

Cherryvale Nursing & Rehabilitation Center

1001 W. Main St., P.O. Box 336
Cherryvale, KS 67335
(620) 336-2102

Cherryvale Police Department

123 W. Main
Cherryvale, KS 67335
(620) 336-2400

Cherryvale Rural Health Clinic

216 E. 4th St.
Cherryvale, KS 67335
(620) 336-2131

Cherryvale Public Library

329 E. Main St.
Cherryvale, KS 67335
(620) 336-3460

Cherryvale Senior Citizen Center

207 E. Main
Cherryvale, KS 67335
(620) 336-2624/(620) 336-2250

Chetopa City Library

312 Maple
Chetopa, KS 67336
(620) 236-7194

Chetopa Manor

814 Walnut St. Chetopa, KS 67336
(620) 236-7248

Child Care Aware of Southeast Kansas**Mound Valley**

(620) 687-4319

Pittsburg

105 West 3rd Street
Pittsburg, KS 66762
(620) 232-9700

Child Protective Services**Report Only**

(800) 922-5330

Coffeyville

(620) 251-5750

Independence

(620) 331-0350

Child Start

(800) 684-3962

Child Support Customer Service

(888) 757-2442

Children's Hospice International

(703) 684-0330

Children's Mercy

2401 Gillham Rd.

Kansas City, MO 64108

(816) 234-3000

Children's Nutrition Services

1316 Madison St.

Fredonia, KS 66736

(620) 378-4840

Choices

113 W. 3rd

Pittsburg, KS 66762

(620) 231-0208

Christian Adoption

P.O. Box 243

Coffeyville, KS 67337

(620) 251-4405/(800) 277-7006

Christian Karate Academy

134 W. Oak

Independence, KS 67301

Christians United Feeding Friends

South 4th at Maple

Independence, KS 67301

(620) 331-4794

Church of Christ**Cherryvale**

Old Highway 169

Cherryvale, KS 67335

(620) 336-3948

Coffeyville

(620) 251-0559

Church of the Nazarene

312 W. 4th

Cherryvale, KS 67335

(620) 336-2581

Circles – Coffeyville/Independence

(620) 332-3125

Class LTD

www.classltd.org

Coffeyville

Montgomery County Service Center

1117 W. 8th St.

Coffeyville, KS 67337

(620) 251-7604/(800) 479-0259

Columbus

Administrative Office

1200 Merle Evans Dr., P.O. Box 266

Columbus, KS 66725

(620) 429-1212

Pittsburg

Crawford County - Service Center

2928 N. Rouse, P.O. Box 297

Pittsburg, KS 66762 (620) 231-3131

Independence

2801 W. Main St., Suite B

Independence, KS 67301

(620) 331-8604/(800) 479-0259

Parsons

Labette County Service Center

1207 Partridge

Parsons, KS 67357

(620) 421-2800

Cleveland Apartments

313 S. Linden

Coffeyville, KS 67337 (620) 251-6790

Clothes Closet

Main & Liberty - Annex of Methodist Church

Cherryvale, KS 67335

Coffeyville City Offices

102 W. 7th

Coffeyville, KS 67337

(620) 252-6124

Coffeyville Chamber of Commerce

807 Walnut

Coffeyville, KS 67337

(620) 251-2550

Coffeyville Community College

400 W. 11th

Coffeyville, KS 67337

(620) 251-7700/(877) 51-RAVEN

CCC Adult Education

520 W. 8th

(620) 252-7000

Coffeyville Doctors Clinic

801 W. 8th, P.O. Box 1057

Coffeyville, KS 67337

Coffeyville Family Practice

209 W. 7th, P.O. Box 564

Coffeyville, KS 67337

(620) 251-1100

Coffeyville Fire Department

701 S. Walnut, P.O. Box 1629
Coffeyville, KS 67337
(620) 252-6147

Coffeyville Garden Apartments

1099 Highland Rd.
Coffeyville, KS 67337
(620) 251-6517

Coffeyville Police Department

102 W. 7th, P.O. Box 1629
Coffeyville, KS 67335
(620) 252-6122

Coffeyville Public Library

311 W. 10th
Coffeyville, KS 67337
(620) 251-1370

**Coffeyville Regional Medical Center
(CRMC)**

1400 W. 4th
Coffeyville, KS 67337
(620) 251-1200/(800) 540-2762

Coffeyville Senior Citizens Activity Center

601 Walnut
Coffeyville, KS 67337
(620) 251-7890

Coffeyville Vo-Tech

1208 W. 4th
Coffeyville, KS 67337
(620) 251-4469

Comforting Angels

Coffeyville
9th & Elm, P.O. Box 385
Coffeyville, KS 67337
(620) 251-6677

Parsons

115 S. 18th St., Ste 208
Parsons, KS 67357
(888) 959-66 77

Commodity Distribution

Cherryvale
(620) 336-2250

Elk City
(620) 205-9329

Independence
(620) 331-3840

Liberty
(620) 336-2831

Neodesha
(620) 325-2749

Community Access Center

307 1/2 W. Pecan
Independence KS, 67301
(620) 331-5115

Community Acts of Love

Old Hwy 96 between Fredonia and Fall River
(620) 378-3989

Community Clothes Closet

1625 W. Main
Independence, KS 67301
(620) 331-2521

Community Corrections**11th Judicial District**

1 Katy Drive Parsons, KS 67357
(620) 421-5840

31st Judicial District

9 E. Main Chanute, KS 66720
(620) 431-5725

Montgomery County**Independence**

200 Arco Pl., Ste 360, P.O. Box 846
Independence, KS 67301
(620) 331-4474

Coffeyville

(City Hall) 3rd Fl., P.O. Box 11
Coffeyville, KS 67337
(620) 251-7531

**Community Developmental Disability
Organization – CDDO (Southeast Kansas
– Montgomery Labette Cherokee
Crawford)**

1200 Merle Evans Dr., P.O. Box 266
Columbus, KS 66725-0266
(620) 429-8985/(800) 479-0259

**Community Health Center of Southeast
Kansas****Coffeyville Cline & Dental Center**

604 S. Union Street
Coffeyville, KS 67337
(620) 251-4300

Columbus

(620) 429-2101/(866) 396-6788

Iola Dental Clinic

1408 E. Street
Iola, KS 66749
(620) 365-6400/(866) 396-6800

Pittsburg Clinic

3011 N. Michigan
Pittsburg, KS 66762
(620) 231-9873

Pittsburg Dental Center

924 N. Broadway
Pittsburg, KS 66762
(620) 231-6788

Community United Feeding Friends

South 4th at Maple
Independence, KS 67301
(620) 331-4794

Connections

415 Fruitland, P.O. Box 688
Independence, KS 67301
(620) 332-1976/(866) 485-4858

Cornerstone Family Fitness

2801 W. Main St.
Independence, KS 67301
(620) 331-1161

Coventry Health Care of Kansas

8535 E. 21st N.
Wichita, KS 67206
(866) 320-0697

Cowley County Council on Aging

700 Gary Street, Suite C
Winfield, KS 67156
(620) 221-7020

Arkansas City

(620) 442-3330

Cowley County Sheriff Department

311 E. 9th Ave.
Winfield, KS 67156
(620) 221-5444

Craig Home Care**Independence**

114 E. Main, P.O. Box 1044
Independence, KS 67301
(620) 331-6500/(888) 427-6500

Pediatric Care

114 E. Main, P.O. Box 1044
Independence, KS 67301
(620) 331-6500/(888) 427-6500

Wichita

910 E. Douglas, P.O. Box 2241
Wichita, KS 67201-2241
(316) 264-9998/(888) 260-9990

Creating Women's Fitness

106 S. 25th
Independence, KS 67301
(620) 331-9995

CRMC Medical Group-Primary Care

1400 W. 4th St.
Coffeyville, KS 67337
801 W. 8th, P.O. Box 1057
(620) 688-6566

CRMC Medical Group-Women's Health Clinic

14 W00 W 4th St.
Coffeyville, KS 67337

CRMC Medical Group-Multi Specialty Clinic

122 W. Myrtle
Independence, KS 67301
(620) 330-8118

Crystalbrook Church

801 W. Chestnut St.
Independence, KS 67301
(620) 331-2444

Dale Apartments

206 W. 8th
Coffeyville, KS 67337
(620) 251-3040

DCCCA**Chanute**

215 West Cherry, P.O. Box 702
Chanute, KS 66720
(620) 432-5180

El Dorado

119 Jones St.
El Dorado, KS 67042
(316) 322-9600

Emporia

115 West 5th Street
Emporia, KS 66801
(620) 343-2109

Pittsburg

1102 S. Rouse St.
Pittsburg, KS 66762
(620) 231-9840

Winfield

121 College
Winfield, KS 67156
(620) 221-3720

Dearing Christian Church

302 S. Independence St.
Dearing, KS 67340
(620) 948-3954

Dennis - Osage Township Fire Department

105 S. Main St. Dennis, KS 67341
(620) 423-3149

Diabetic Support Group

Independence, KS 67301
(620) 332-3250/(620) 331-2698

Eagle Estates

1354 Taylor Rd., P.O. Box 1012
Independence, KS 67301
(620) 331-1662

Early Childhood Resource Center

2601 Gabriel
Parsons, KS 67357
(620) 421-6550/(800) 362-0390

Edna Fire Department

200 N. Delaware St.
Edna, KS 67342
(620) 922-3321

**Elk and Chautauqua County Special
Education Cooperative**

1201 State Hwy. 99
Howard, KS 67349
(620) 374-2113

Elk City Library

113 N. Montgomery
Elk City, KS 67344
(620) 627-2467/(620) 205-9329

Elk City Volunteer Fire Department

114 S. Montgomery
Elk City, KS 67344
(620) 627-2483

Elk County Council on Aging

134 E. Washington
Howard, KS 67349
(620) 374-2403/(620) 374-3068

Elk County Attorney

127 N. Pine, P.O. Box 415
Howard, KS 67349
(620) 374-3507

Elk County Court Services

P.O. Box 306
Howard, KS 67349
(620) 374-2024

Elk County Extension Office

130 S. Pennsylvania, P.O. Box 647
Howard, KS 67349
(620) 374-2174

Elk County Health Department

127 N. Pine, P.O. Box 566
Howard, KS 67349
(620) 374-2277

Elk County Sheriff Department

100 N. Cedar
Howard, KS 67349
(620) 374-2108

**Elm Acres Youth and Family Service
Adolescent Recovery Services**

1002 East Madison Street
Pittsburg, KS 66762
(620) 231-6129

Episcopal Church

400 E. Maple
Independence, KS 67301
(620) 331-4794

Eureka Nursing Center

1020 N. School St.
Eureka, KS 67045
(620) 583-5584

Faith House

1531 S. Evergreen
Chanute, KS 66720
(620) 431-6919

Families - THE Foundation

(620) 330-4850

Family & Children's Service Center

200 Arco Place
Independence, KS 67301
(620) 332-1340

**Family Life Center Safe House of Butler
County**

El Dorado, KS 67042
(316) 321-7104

Family Life Counseling Center

5100 Main St.
Parsons, KS 67357
(620) 421-0120

First Assembly of God Church

1102 Washington
Fredonia, KS 66736
(620) 378-2801

**First Baptist Church
Caney**

900 S. Ridgeway St.
Caney, KS 67333
(620) 879-5220

Independence

220 S. Penn
Independence, KS 67301
(620) 331-6290

Sedan

216 N. Chautauqua
Sedan, KS 67361
(620) 725-5399

**First Christian Church
Chanute**

102 N. Grant
Chanute, KS 66720
(620) 431-3758

Columbus

320 W Maple St.
Columbus, KS 66725
(620) 429-2791

Elk City

222 S. Montgomery Ave.
Elk City, KS 67344
(620) 627-2601

Independence

319 W. Laurel
Independence, KS 67301
(620) 331-3880

First Church of the Nazarene

3167 S. 10th
Independence, KS 67301
(620) 331-5404

**First United Methodist Church
Coffeyville**

304 W. 10th
Coffeyville, KS 67337
(620) 251-3240

Columbus

320 W. Maple St.
Columbus, KS 66725
(620) 429-2791

Independence

200 S. Penn
Independence, KS 67301
(620) 331-3840

**Fish 'n' Loaves Pantry (Cherryvale
Christian Church)**

319 N. Main
Cherryvale, KS 67335
(620) 336-2533

Flint Hills Assembly of God Church

115 W. Wabash
Howard, KS 67349
(620) 374-2823

Food Pantry - Elk City

522 E. Hickory
Elk City, KS 67344
(620) 627-2225

**Four County Mental Health Center
Coffeyville**

1601 W. 4th
Coffeyville, KS 67337
(620) 251-8180

Cowley County

22214 D St., Strother Field
Winfield, KS 67156
(620) 221-9664/(620) 442-4540

Fredonia

437 N. 6th
Fredonia, KS 66736
(620) 378-4400

Independence

3751 W. Main, P.O. Box 688
Independence, KS 67301
(620) 331-1748

Neodesha

101 S. 8th
Neodesha, KS 66757
(620) 325-2141

Sedan

Lee St., P.O. Box 57
Sedan, KS 67361
(620) 725.5677

Four Square Church of Parsons

98 E. Main St.
Parsons, KS 67357
(620) 423-0423

Fredonia Chamber of Commerce

402 N. 7th
Fredonia, KS 66736
(620) 378-3221

Fredonia Child Care Center

632 N. 7th
Fredonia, KS 66736
(620) 378-4362

Fredonia Fire Department

422 N. 7th St.
Fredonia, KS 66736
(620) 378-2188

Fredonia Housing Authority

519 S. 15th
Fredonia, KS 66736
(620) 378-3911

Fredonia Police Department

128 Adams St.
Fredonia, KS 66736
(620) 378-2424

Fredonia Public Library

807 Jefferson
Fredonia, KS 66736
(620) 378-2863

Fredonia Recreation Commission

432 N. 9th
Fredonia, KS 66736
(620) 378-4254

Fredonia Regional Hospital

1527 Madison
Fredonia, KS 66736
(620) 378-2121

Fredonia Senior Center

629 N. 7th
Fredonia, KS 66736
(620) 378-2000

Friendship Meals***Cedar Vale***

609 Cedar St.
Cedar Vale, KS 67024
(620) 758-2675

Grenola

124 S. Main
Grenola, KS 67346
(620) 358-3601

Howard

148 N. Wabash
Howard, KS 67349
(620) 374-2200

Moline

110 N. Main
Moline, KS 67353
(620) 647-8178

Longton

406 Kansas Ave.
Longton, KS 67352
(620) 642-6861

Gansel House

3768 CR 5250
Independence, KS 67301
(620) 331-7422

Garden Walk Apartments

N. 10th St.
Independence, KS 67301
(620) 331-1205

Genesis

111 W. 7th
Coffeyville, KS 67337
(620) 251-3004/(620) 870-9903

Get Fit! Wellness Center

602 W. Main
Neodesha, KS 66757
(620) 325-2117

Girl Scouts of Kansas Heartland

360 Lexington Rd.
Wichita, KS 67218

Golden Living Center***Fredonia***

240 N. 19th St.
Fredonia, KS 66736
(620) 378-4136

Neodesha

1626 N. 8th St.
Neodesha, KS 66757
(620) 325-3088

Grief Support Group

307 1/2 W. Pecan
Independence, KS 67301

Four County Mental Health Center

(620) 331-1748

Harry Hynes Memorial Hospice

(620) 251-1640
Webb & Rodrick Chapel
(620) 331-3900

Guest Home Estates

400 S. McGee
Caney, KS 67333
(620) 879-5199

Guest Home Estates II

1202 S. Plummer Ave.
Chanute, KS 66720
(620) 431-9509

Hardin Hospice

1906 Main, Ste. 103
Parsons, KS 67357

Harry Hynes Memorial Hospice

2408 W. 8th
Coffeyville, KS 67337
(620) 251-1640/(866) 865-2154

Head Start Early Childhood Development

1103 N. 6th
Neodesha, KS
(620) 3225-2813

Help Fund of Cherryvale

(620) 336-8952

Home Health Care Connection

1717 Corning Ave.
Parsons, KS 67357
(620) 421-1899

Home Sweet Home Homeless Shelter

Independence, KS 67301
(620) 331-0956

Home Sweet Home Care

429 S. 20th St.
Fredonia, KS 66736
(620) 378-2067

Hometown Health Care

314 N. 7th St.
Fredonia, KS 66736
(620) 378-3760

Hope Renewed

1040 N. West St.
Wichita, KS 67203
(316) 945-9400/(800) 395-HELP

Hope Unlimited

Iola, KS 66749
(620) 365-7566

Hospice Care of Kansas
201 N. Penn, Ste. 105
Independence, KS 67301
(620) 331-1525

Hospice Care of Kansas
113 E. Main
Sedan, KS 67361
(620) 725-4160

Housing Authority
Howard Housing Authority
(620) 374-2386
Humbolt Housing Authority
Independence Housing Authority
120 N. 6th
Independence, KS 67301
(620) 332-2536
Neodesha Housing Authority
118 S. 6th
Neodesha, KS 66757
(620) 325-2440

Howard City Library
126 S. Wabash
Howard, KS 67349
(620) 374-2890

Howard Health Clinic

Howard Police Department
116 N. Cedar
Howard, KS 67349
(620) 374-2108

Howard Volunteer Fire Department
110 N. Pine St.
Howard, KS 67349
(620) 374-2121

Humboldt City Library
916 Bridge
Humboldt, KS 66748

I Cab Taxi
Coffeyville
(620) 251-2084
Independence
(620) 331-6019

Independence Chamber of Commerce
616 N. Penn Ave., P.O. Box 386
Independence, KS 67301
(620) 331-1890

**Independence Food Basket (See
Community Access Center)**

Independence City Offices
120 N. 6th
Independence, KS 67301
(620) 332-2500

Independence Community College
1057 W. College Ave., P.O. Box 708
Independence, KS 67301
(620) 331-4100/(800) 842-6063
Adult Education
(620) 332-1420
Independence West Campus
2615 W. Main, P.O. Box 708
Independence, KS 67301
(620) 332-5630

Independence Fire Department
120 N. 6th St.
Independence, KS 67301
(620) 332-2504

Independence Imagination Library
P.O. Box 487, 517 N. 10th St.
Independence, KS 67301
(620) 332-1800

Independence Police Department
120 N. 6th St.
Independence, KS 67301
(620) 332-1700

Independence Public Library
220 E. Maple
Independence, KS 67301
(620) 331-3030

Independence Recreation Commission
1501 N. 10th St.
Independence, KS 67301
(620) 331-0260

Independence Rural Fire Department
Independence, KS 67301

Independence Transport
(620) 331-9385

Independence Tutoring & Counseling
(620) 331-4420

Independent Strides Home Health
315 N. 16th St.
Parsons, KS 67357
(620) 423-3328
Jane Phillips Health for Life
2011 N. Penn Ave.
Independence, KS 67301
(620) 331-7250

Juvenile Justice Authority

Kansas Attorney General
120 S.W. 10th Ave. #2
Topeka, KS 66612
(785) 296-2215

Kansas Children's Service League**Independence**

Independence, KS 67301
(620) 770-3305/(877) 530-5275

Pittsburg

824 E 4th St., Suite 1
Pittsburg, KS 66762
(620) 232-1031

Wichita

1365 North Custer, P.O. Box 517
Wichita, KS 67201
(316) 942-4261

Kansas Commission on Veterans Affairs

200 Arco Place, Room 421, P.O. Box 117
Independence, KS 67301
(620) 331-0540

**Kansas Department of Aging and
Disability Services - Behavioral Health****Kansas Department for Children and
Families Adult Protective Center -
Reporting Center**

(800) 922-5330

Chanute

1500 W. 7th
Chanute, KS 66720
(620) 431-5000

Coffeyville

602 Union
Coffeyville, KS 67337
(620) 251-5750

Independence

Independence Service Center
200 Arco Place, P.O. Box 141
Independence, KS 67301
(620) 331-0350/(888) 369-4777

Iola

406 N. Buckeye
Iola, KS 66749
(620) 365-2164

Parsons

300 N. 17th Parsons, KS 67357
(620) 421-4500

Winfield

1809 S. Main
Winfield, KS 67156
(620) 221-6400

Kansas Department of Education

120 S.E. 10th Ave.
Topeka, KS 66612

**Kansas Department of Health and
Environment**

Curtis State Office Building
1000 S.W. Jackson
Topeka, KS 66612

Kansas Equipment Exchange

2601 Gabriel Ave.
Parsons, KS 67357
(620) 421-4514

Kansas Family Partnerships

5942 S.W. 29th St., Ste. D
Topeka, KS 66614
(785) 266-6161/(800) 206-7231

Kansas Gambling Hotline

(800) 522-4700

**Kansas Health Policy Authority -
Outreach Eligibility**

800 W. Laurel
Independence, KS 67301
(620) 331-3283

**Kansas Inservice Training System - (Life
Span Institute at Parsons)**

2601 Gabriel
Parsons, KS 67357
(620) 421-6550

Kansas Payment Services

(877) 572-5722

Kansas Wildlife, Parks, Tourism

512 S.E. 25th Ave.
Pratt, KS 67124
(620) 672-5911

KANSASWorks - Southeast

Independence, KS 67301
(620) 332-5930/(620) 332-5906

Kaw Valley

11 N. Highland
Chanute, KS 66762
(620) 431-1837

**K-State Research & Extension Service
Wildcat District**

410 Peter Pan Road, Suite B
Independence, KS 67301
(620) 331-2690

KU Center for Advanced Fetal Care

The University of Kansas Medical Center
3901 Rainbow Blvd.
Kansas City, KS 66160
(913) 588-5000

KVC Behavioral Healthcare

11 N. Highland
Chanute, KS 66720
(620) 431-1862

Labette Center for Mental Health Services

1730 Belmont
Parsons, KS 67357
(620) 421-3770/(800) 303-3770

Labette County Assistance Center

1929 Crawford, Suite B
Parsons, KS 67357

Labette County Attorney

201 South Central Avenue
Parsons, KS 67357
(620) 421-6370

Labette County Court Services

1 Katy Drive
Parsons, KS 67357
(620) 421-5840

Labette County Health Department

1902 S. Hwy. 59, Bldg. C
Parsons, KS 67357
(620) 421-4350

Labette County Sheriff Department

718 5th St.
Oswego, KS 67356
(620) 795-2556

Labette Health

1902 U.S. 59
Parsons, KS 67357
(620) 421-4881

Legal Services of SE Kansas

408 N. Walnut
Pittsburg, KS 66762
(620) 232-1330/(800) 723-6953

Liberty Township Hall

203 N. 5th
Liberty, KS 67351
(620) 336-2831

Lighthouse, The

1411 W. Hensley Blvd.
Bartlesville, OK 74003
(918) 337-0182/(918) 336-9029

Lincare

2411 Main St.
Parsons, KS 67357
(620) 421-2774

Lion's Club

Coffeyville
Independence

Longton Police Department

920 Kansas
Longton, KS 67352
(620) 642-2264

Longton Public Library

512-A Kansas Ave.
Longton, KS 67352
(620) 642-6012

Longton Volunteer Fire Department

511 Kansas
Longton, KS 67352
(620) 642-2225

Low Vision Support Group (See Lions Club)**Madison Square Clubhouse**

1701 Madison St.
Fredonia, KS 66736
(620) 378-2802

Make-A-Wish Foundation of Kansas

2016 N. Amidon
Wichita
(316) 838-9474

Manor House Apartments

101 E. 5th
Coffeyville, KS 67337
(620) 251-2581

Meals on Wheels

Coffeyville
(620) 251-0990
Independence
(620) 331-1549

Medicalodge of Coffeyville

720 W. 1st St.
Coffeyville, KS 67337
(620) 251-3705

Mercy House (First United Methodist Church)

1102 Washington
Fredonia, KS 66736
(620) 378-2801

Midwest Pregnancy Care Center

Coffeyville
506 Union. P.O. Box 383
Coffeyville, KS 67337
(620) 251-0900
Independence
213 E. Main, P.O. Box 981
Independence, KS 67301
(620) 331-0700

Ministerial Alliance

Baxter Springs Ministerial Alliance - 1st United Methodist Church
1310 E. Ave.
Baxter Springs, KS 66713
(620) 856-5996

Caney Ministerial Alliance

First Baptist Church
900 S. Ridgeway St.
Caney, KS 67333
(620) 879-5220

Cherryvale Ministerial Alliance

329 E. Main
Cherryvale, KS 67335
(620) 336-2375

Coffeyville Ministerial Alliance

Coffeyville, KS 67337
(620) 251-1977

Elk County Ministerial Alliance

115 N. Wabash
Howard, KS
(620) 374-2823

Elk City Ministerial Alliance

Elk City, KS 67344
(620) 336-2353/(208) 589-2170

Fredonia Ministerial Alliance

(620) 378-2764

Girard Ministerial Alliance

119 N. Summit
Girard, KS 66743
(620) 724-8090

Humboldt Ministerial Alliance

907 Bridge
Humboldt, KS 66748
(620) 473-2343

Independence Ministerial Alliance

Independence, KS 67301
(620) 251-1977

Iola Ministerial Alliance

16 W. Broadway
Iola, KS 66749

Neodesha Ministerial Alliance

802 Indiana St.
Neodesha, KS 66757
(620) 325-2787

Moline Financial Assistance

(620) 647-8148

Moline Food Pantry

(620) 647-3416

Moline Public Library

107 N. Main St.
Moline, KS 67353
(620) 647-3310

Montgomery County District Attorney

300 E. Main St.
Independence, KS 67301
(620) 550-1231

Montgomery County Community**Corrections****Montgomery County Court Services****Coffeyville**

102 W 7th
Coffeyville, KS 67337
(620) 251-5090

Independence

217 E. Myrtle, Rm. 102
Independence, KS 67301
(620) 330-1060

Montgomery County Health Department**Coffeyville**

908 S. Walnut
Coffeyville, KS 67337
(620) 251-4210

Independence

209 E. Laurel
Independence, KS 67301
(620) 331-4300

Montgomery County Sheriff Department

300 E. Main St.
Independence, KS 67301
(620) 331-1500

Montgomery Place

614 S. 8th
Independence, KS 67301
(620) 331-2577

Mosaic**Coffeyville**

1206 S. Elm St.
Coffeyville, KS 67337
(620) 251-8592/(620) 251-0997/(620) 688-1030

Pittsburg

2807 N Broadway
Pittsburg, KS 66762
(620) 231-5590

Mothers of Preschoolers (MOPS) - (See Tyro Christian Church)**Mound Valley Library**

411 Hickory
Mound Valley, KS 67354
(620) 328-3411

My Family

200 ARCO Place
Independence, KS 67301
(620) 330-4850

Narcotics Anonymous**Cedar Vale**

(Cedar Apartments) 602 Wabash St.
Cedar Vale, KS 67024

Coffeyville - Episcopal Church

7th & Elm
Coffeyville, KS 67337
(620) 251-5602/(620) 988-5602

Independence

121 S. 14th
Independence, KS 67301

Caney (Liberty Church of Caney)

114 N. Main

Caney, KS

Parsons (Hamilton Church)

1527 Morton Avenue

Parsons, KS 67357

Neodesha Chamber of Commerce

100 S. 1st St.
Neodesha, KS
(620) 325-2055

Neodesha Civic Center

1407 N. 8th
Neodesha, KS 66757
(620) 325-2749

Neodesha Fire Department

112 S. 4th St.
Neodesha, KS 66757
(620) 325-2642

Neodesha Police Department

108 S. 4th St.
Neodesha, KS 66757
(620) 325-3031

Neodesha Recreation Department

113 S. 5th
Neodesha, KS 66757
(620) 325-3681

Neodesha Senior Center

604 Main St.
Neodesha, KS 66757
(620) 325-5484

Neodesha Service Center

1409 N. 8th
Neodesha, KS 66757
(620) 325-2702

Neosho Memorial Regional Medical Center

629 S. Plummer
Chanute, KS 66720
(620) 431-4000

Neutral Lands of Cherokee

617 Ottawa Ave.
Baxter Springs, KS 66713
(620) 856-3400

New Beginnings

1001 Wilson St.
Neodesha, KS 66757
(620) 325-3333

Osage Township Fire Department

703 5th St.
Oswego, KS 67356
(620) 795-4731

Oswego Home Place

1010 Commercial St.
Oswego, KS 67356
(620) 795-4750

Oswego Public Library

704 4th St.
Oswego, KS 67356
(620) 795-4921

Parents as Teachers

Southeast Kansas Education Service Center (Greenbush)

(800) 557-3412

Labette - USD #506

(620) 784-5326

Coffeyville - USD #445

(620) 252-6485

Parsons Community Free Health Clinic

521 N. 16th St.
Parsons, KS 67357
(620) 421-6430

Parsons Fire Department

1819 Washington Ave.
Parsons, KS 67357
(620) 421-5360

Parsons Presbyterian Manor

3501 Dirr Ave.
Parsons, KS 67357
(620) 421-1450

Parsons Public Library

311 S. 17th St.
Parsons, KS 67357
(620) 421-5920

Parsons State Hospital & Training Center

2601 Gabriel Ave.
Parsons, KS 67357
(620) 421-6550

Penn Manor

601 S. Penn
Independence, KS 67301
(620) 331-8010

Penn Terrace

401 S. Penn
Independence, KS 67301
(620) 331-1678

Peru - Belleville Rural Fire Department

112 E. 6th St.
Peru, KS 67360
(620) 249-5919

Pheasant Point Apartments

2300 N. 20th Place
Independence, KS 67301
(620) 331-3888

Pickwick Apartments

600 Maple
Coffeyville, KS 67337
(620) 251-3310

Plaza Apartments

Coffeyville, KS 67337
(620) 251-0500

Pleasant Valley Manor

P.O. Box 40,
613 E. Elm St.
Sedan, KS 67361
(620) 725-3153

Presbyterian Manor

601 W. 11th
Parsons, KS 67357

Preferred Family Healthcare

602 S. State St., P.O. Box 384
Iola, KS 66749
(620) 365-8402

Pregnancy Crisis Center of Wichita

1040 N. West St.
Wichita, KS 67203
(316) 945-9400/(800) 395-HELP

R&S Studios

117 W. Main
Independence, KS 67301
(620) 331-4010

Rachel's Works

(620) 714-0336

Radiant Electric Coop., Inc.

P.O. Box 390, 9346 Jewell Rd.
Fredonia, KS 66736
(620) 378-2161

Rankin W A Memorial Library

502 Indiana
Neodesha, KS 66757
(620) 325-3275

Red Cross

128 W. 8th
Coffeyville, KS 67337
(620) 251-1050

Regal Estate of Glenwood, Inc.

1000 Mulberry St., P.O. Box 627
Independence, KS 67301
(620) 331-8789

Rolling Prairie Extension Office

215 N. Chautauqua
Sedan, KS 67361
(620) 725-5890

Safe Homes

P.O. Box 181
Winfield, KS 67156
(620) 221-7079/(620) 221-HELP
(4357)/(800) 794-7672

Safehouse Crisis Center**Coffeyville**

1317 W. 8th St.
Coffeyville, KS 67337
(620) 251-0030/(888) 320-7218

Pittsburg

669 S. Hwy. 69
Pittsburg, KS 66762
(620) 231-8692/(800) 794-9148

Salina Rescue Mission

1716 Summers Rd., P.O. Box 1667
Salina, KS 67401
(785) 823-2610

Salvation Army**Montgomery County (Northern)**

Community Access Center
307 1/2 W. Pecan
Independence, KS 67301
(620) 331-5115

Montgomery County (Southern)

102 W.12th
Coffeyville, KS 67337
(620) 251-2686/(888) 460-1050

Sedan

Chautauqua County Health Department
215 N. Chautauqua St.
Sedan, KS 67361
(620) 725-5850

Wilson County

Fredonia Police Department
128 Adams
Fredonia, KS 66736
(620) 378-4152

Sedan City Hospital

300 North St. Sedan, KS 67361
(620) 725-3115

Sedan City Library

115 N. Chautauqua St.
Sedan, KS 67361
(620) 725-3405

Sedan Police Department

211 W. Main St.
Sedan, KS 67361
(620) 725-3136

SEK Academy

220 E. Chestnut
Independence, KS 67301
(620) 331-0057

SEK Assistive Technology**SEK--CAP (Southeast Kansas Community Action Program)****SEK-CAP Central Office**

401 N. Sinnet
Girard, KS 66743
(620) 724-8204

Coffeyville

200 S. Walnut, P.O. Box 486
Coffeyville, KS 67337
(620) 251-6920

Fort Scott

212 E. 1st
Fort Scott, KS 66701
(620) 223-0680

Parsons

110 S. 18th, P.O. Box 957
Parsons, KS 67357
(620) 421-6551/(800) 526-3648

Pittsburg

204 N. Pine
Pittsburg, KS 66762
(620) 724-8204/(620) 231-5400

SEK-CAP Assistive Technology for Kansans

2601 Gabriel Avenue, P.O. Box 738
Parsons, KS 67357
(800) 526-3648

SEK-CAP Head Start

200 S. Walnut, P.O. Box 465
Coffeyville, KS 67337
(620) 251-1147

Independence

900 E. Poplar, P.O. Box 274
Independence, KS 67301
(620) 331-6140

Neodesha

415 N. 8th
Neodesha, KS 66757
(620) 325-3066

SEK-CAP Public Transportation

(620) 252-0119/(620) 724-8204

Senior Citizens Activity Center

611 Walnut
Coffeyville, KS 67337
(620) 251-7890

Southeast Kansas Education Service Center (Greenbush)

947 West 47 Highway
Girard, KS 66743
(620) 724-6281

Senior Employment Resource Program (SER)**Senior Services of SEK**

710 W. Chestnut
Independence, KS 67301
(620) 331-1549
618 S. Union, P.O. Box 1415
Coffeyville, KS 67337
(620) 251-7313

Sheltered Living Homes

2627 S.W. Arrowhead Rd.
Topeka, KS 66614
(785) 272-1761
4316 S.W. Drury Ln.
Topeka, KS 66604
(785) 273-2214

Sincere Praise Evangelistic Center

1116 N. 7th
Neodesha, KS 66757
(620) 325-2749

Single Women with Children (First United Methodist Church)

304 W. 10th
Coffeyville, KS 67337
(620) 251-3240

SKIL - Southeast Kansas Independent Living, Inc.**Chanute**

106 E. Main, P.O. Box 645
Chanute, KS 66720
(620) 431-0757/(866) 927-0757

Columbus

125 East Maple, P.O. Box 478
Columbus, KS 66725
(620) 429-3600/(866) 927-3600

Fredonia

623 Monroe, P.O. Box 448
Fredonia, KS 66736
(620) 378-4881/(866) 927-4881

Independence

107 East Main, P.O. Box 944
Independence, KS 67301
(620) 331-1006/(866) 927-1006

Parsons

1801 Main, P.O. Box 95
Parsons, KS 67357
(620) 421-5502/(800) 688-5616

Parsons Assistive Technology

110 S. 18th, P.O. Box 657
Parsons, KS 67357
(620) 421-6551/(800) 526-3648

Pittsburg

105 W. 3rd, P.O. Box 1706
Pittsburg, KS 66762
(620) 231-6780/(866) 927-6780

Sedan

113 West Main, P.O. Box 340
Sedan, KS 67361
(620) 725-3990/(866) 906-3990

Social Security

2125 N. Penn, Ste. A
Independence
(620) 331-4080/(800) 772-1213

Southeast Assisted Technology (SEAT)**Southeast Kansas Independent Living**

(620) 331-1006/(620) 725-3990

Southeast Kansas Legal Associates

121 W. 8th
Coffeyville, KS 67337
(620) 251-5950

Southeast Kansas Library System

218 E. Madison Ave.
Iola, KS 66749
(620) 365-5136/(800) 279-3219

Southeast Kansas Mental Health Center

304 North Jefferson
Iola, KS 66749
(620) 365-8641

Southeast Kansas Respite Services

2601 Gabriel
Parsons, KS 67357
(620) 421-655

Spring River Mental Health & Wellness**Riverton**

6610 S.E. Quakervale Rd.
Riverton, KS 66770
(620) 848-2300

Columbus

201 W. Walnut
Columbus, KS 66725
(620) 429-1860

St. John Clinic

800 W. Myrtle
Independence, KS 67301
(620) 332-328

Stage Art Productions

112 W. Main St.
Independence, KS 67301
(918) 333-7270

Successful Dreams Support Services

115 S.18th, Suite 207
Parsons, KS 67357
(620) 421-2014

Sycamore Landing Apartments

701 Lewark St.
Coffeyville, KS 67337
(620) 251-0244

Sycamore Rural Fire Department

Sycamore, KS 67363

TFI - The Farm, Inc.**Chanute**

1709 W. 7th Street, P.O. Box 512
Chanute, KS 66720
(620) 432-5200/(866) 232-5200

Independence

501 N. Penn, P.O. Box 527
Independence, KS 67301
(620) 331-0411/(877) 531-0411

Parsons

1906 Main St., Suite B, P.O. Box 832
Parsons, KS 67357
620-421-6637/866-521-6637

Thanks Program, Inc.

629 N. 7th
Fredonia, KS 66736
(620) 378-2000

Thayer Christian Church

8495 Dom Rd.
Thayer, KS 66776
(620) 839-5650

Topeka Rescue Mission

600 N. Kansas
Topeka, KS 66608
(785) 354-1744

**Tri-County Special Education Interlocal
#607**

220 E. Chestnut, P.O. Box 668
Independence, KS 67301
(620) 331-6303

Twilight Manor

849 E. Washington St.
Howard, KS 67349
(620) 374-2495

Tyro Christian Church

301 S. Market Tyro, KS 67364
(620) 289-4415

Uni-care Plan of Kansas
(785) 250-0653

Union Rescue Mission
130 N. St. Francis
Wichita, KS 67202
(316) 265-0132

United Methodist Church
Neodesha
802 Indiana St.
Neodesha, KS 66757
(620) 325-2787
Elk City
200 South Lincoln
Elk City, KS 67344
(620) 627-2225

United Way of the Plains - Resource Information
Dial 211

UpperCut Boxing
106 S. 6th
Independence, KS 67301

USD 282 - West Elk
Moline Elementary School
416 Plumb St., P.O. Box 278
Howard, KS 67349
(620) 647-3289
West Elk Junior-Senior High School
1199 State Hwy. 99, P.O. Box 278
Howard, KS 67349
(620) 374-2147

USD #283 - Longton – Elk Valley
Elk Valley Elementary Primary School & High School
701 S. Delaware
Longton, KS 67352
(620) 642-2811

USD 285 - Cedar Vale
Cedar Vale Elementary School & High School
508 Dora, P.O. Box 458
Cedar Vale, KS 67024
(620) 758-2265

USD 286 - Sedan
Board of Education
302 Sherman
Sedan, KS 67361
(620) 725-3187
Sedan Elementary School
404 Sherman
Sedan, KS 67361
(620) 725-5611
Sedan 4-Year Old Preschool
Sedan, KS 67361

Sedan Junior-Senior High School
404 Sherman
Sedan, KS 67361
(620) 725-3186

USD #387 - Altoona-Midway
District Office
20584 U.S. 75 Hwy.
Buffalo, KS 66717
Phone and Fax (620) 537-772
Altoona Midway Elementary School
833 River St., P.O. Box 128
Altoona, KS 66710
(620) 568-5725/(877) 596-8556
Altoona Midway Middle School & High School
20704 U.S. 75 Hwy.
Buffalo, KS 66717
(620) 537-7711/(877) 596-8249

USD 436 - Caney Valley
Board of Education
700 E. Bullpup Blvd.
Caney, KS 67333
(620) 879-9200
Caney Early Care & Education Center
5110 Tuxedo Blvd.
Bartlesville, OK 74006-2830
Caney Valley Junior High & High School
601 E. Bullpup Blvd.
Caney, KS 67333
(620) 879-9220
Lincoln Memorial School
201 E. 1st
Caney, KS 67333
(620) 879-9240
Virtual School - Caney
Caney Valley High School
601 E. Bullpup Blvd.
Caney, KS 67333
(620) 879-2223

USD 445 - Coffeyville
Board of Education
615 Ellis
Coffeyville, KS 67337-3427
(620) 252-6400
Community Elementary School
102 S. Cline
Coffeyville, KS 67337
(620) 252-6430
Dr. Jerry Hamm Learning Center
220 S. Walnut
Coffeyville, KS 67337
(620) 251-1147
Field Kindley High School
1110 W. 8th
Coffeyville, KS 67337
(620) 252-6410

Grace Academy Preschool

2455 Woodland Ave.
Coffeyville, KS 67337
(620) 251-1190

Holy Name Catholic School

406 Willow
Coffeyville, KS 67337
(620) 251-0480

LINC

216 W. 9th
Coffeyville, KS 67337
(620) 251-9070

Roosevelt Middle School

1000 W. 8th
Coffeyville, KS 67337
(620) 252-6420

Tyro Community Christian School

P.O. Box 306
Tyro, KS 67364

USD 446 - Independence

517 N. 10th, P.O. Drawer 487
Independence, KS 67301
(620) 332-1800

Eisenhower Elementary

501 Spruce
Independence, KS 67301
(620) 332-1854

First United Methodist Preschool

111 E. 11th St., P.O. Box 545
Independence, KS 67301
(620) 331-0719

Independence Bible School

2246 S. 10th St.
Independence, KS 67301
(620) 331-3781

Independence 4-Year Old Preschool**Independence High School**

1301 N. 10th
Independence, KS 67301
(620) 332-1815

Independence Middle School

300 W. Locust
Independence, KS 67301
(620) 332-1836

Jefferson Elementary School

2101 N. 13th St.
Independence, KS 67301
(620) 332-1875

Methodist Preschool**St. Andrew Catholic School**

215 N. Park Blvd.
Independence, KS 67301

Zion Lutheran School

301 S. 11th
Independence, KS 67301
(620) 332-3331

USD 447 - Cherryvale

618 E. 4th St.
Cherryvale, KS 67335
(620) 336-8130

Cherryvale 4-Year Old Preschool

Cherryvale, KS 67335

Cherryvale Middle/High School

700 S. Carson
Cherryvale, KS 67335
(620) 336-8100

Cherryvale Virtual School

218 W. Main
Cherryvale, KS 67335
(620) 336-2530

Lincoln Central School

401 E. Main
Cherryvale, KS 67335
(620) 336-8140

USD 461 - Neodesha

522 Wisconsin, P.O. Box 88
Neodesha, KS 66757
(620) 325-2610

Neodesha 4-Year Old Preschool

Neodesha, KS 66757

Neodesha High School

1001 N. 8th
Neodesha, KS 66757
(620) 325-3015

North Lawn Elementary

620 N. Grandby Ave.
Neodesha, KS 66757
(620) 325-3011

Heller Elementary School

415 E. 8th
Neodesha, KS 66757
(620) 325-3066

USD 484 - Fredonia**Board of Education**

300 N. 6th, P.O. Box 539
Fredonia, KS 66736
(620) 378-4177

Four-Year-Old Preschool

Fredonia, KS

Fredonia Middle School

203 N. 8th
Fredonia, KS 66736
(620) 378-4167

Fredonia Senior High School

916 Robinson
Fredonia, KS 66736
(620) 378-4172

Lincoln Elementary

713 N. 9th
Fredonia, KS 66736
(620) 378-4138

USD 503 - Parsons**Board of Education**

2900 Southern
Parsons, KS 67357
(620) 421-5950

Catholic School***Garfield Elementary School***

300 S.14th St.

Parsons, KS 67357

(620) 421-3530

Guthridge Elementary School

1020 S. 31st St.

Parsons, KS 67357

(620) 421-6800

Meadow View Grade School***Parsons 4-Year Old Preschool***

Parsons, KS 67357

Parsons Senior High School

3030 Morton

Parsons, KS 67357

(620) 421-3660

USD 504 - Oswego***Board of Education***

719 4th St.

Oswego, KS 67356

(620) 795-2126

Neosho Heights Elementary

12 Oregon St.

Oswego, KS 67356

(620) 795-4541

Oswego 4-Year Old Preschool

Oswego, KS 67356

Oswego High School

1501 Tomahawk Trail

Oswego, KS 67356

(620) 795-2125

Oswego Middle School

410 Kansas St.

Oswego, KS 67356

(620) 795-4724

Service Valley Charter Academy

21101 Wallace Rd.

Oswego, KS 67356

(620) 421-3449

USD #505 – Chetopa-St. Paul***Board of Education***

430 Elm St.

Chetopa, KS 67336

(620) 236-7244

Chetopa/St. Paul 4-Year Old Preschool***Chetopa Elementary School***

430 Elm St.

Chetopa, KS 67336

(620) 236-7959

Chetopa High School

430 Elm St.

Chetopa, KS 67336

(620) 236-7959

Chetopa Virtual Learning Center***Chetopa Public Schools***

430 Elm

Chetopa, KS 67336

(620) 236-7244

St. Paul Elementary School***St. Paul High School******USD #506 - Altamont/Bartlett******Board of Education***

401 S. High School St., P.O. Box 189

Altamont, KS 67330

Altamont Grade School

705 E. 6th St.

Altamont, KS 67330

(620) 784-5511

Bartlett Grade School

201 W. 2nd

Bartlett, KS 67332

(620) 226-3414

Edna Grade School

220 W. Myrtle

Edna, KS 67342

Four-Year Old Program***Labette County High School***

601 S. High School, P.O. Box 407

Altamont, KS 67330

(620) 784-5321

Meadow View Grade School

1377 21000 Rd.

Parsons, KS 67357

(620) 421-1857

Mound Valley Grade School

402 Walnut

Mound Valley, KS 67354

(620) 328-3121

Veterans Clinic***Chanute***

629 South Plummer

Chanute, KS 66720

(800) 574-8387 X 54453

Parsons

1907 Harding Dr.,

Parsons, KS 67357

(888) 878-6881

Topeka

2200 Gage Boulevard

Topeka, KS

(785) 350-3111

Wichita

5500 E Kellogg Ave.

Wichita, KS 67218

(316) 685-2221

VFW***Chanute***

VFW Post 1654

1054 W. Main

Chanute, KS 66720

Coffeyville

VFW Post 1022

1714 W. 8th

Coffeyville, KS 67337

(620) 251-5120

Fredonia

VFW Post 3018

Fredonia, KS 66736

(620) 378-4482

Independence

Dewlen Dix Post 1186
113 E. Myrtle, P.O. Box 535
Independence, KS 67301
(620) 331-6010

Parsons

VFW Post 704
105 Main St.
Parsons, KS
(620) 421-6610

Victims' Advocates

Chautauqua County
(620) 725-5876

Elk County

(620) 374-2236

Montgomery County

(620) 330-1020

Wilson County

(620) 378-4115

Vintage Park**Fredonia**

2111 E. Washington St.
Fredonia, KS
66736 (620) 378-2329

Neodesha

400 Fir St.
Neodesha, KS 66757
(620) 325-2244

WIC**Coffeyville (Coffeyville Recreation Center)**

508 Park Street
Coffeyville, KS 67337

Columbus (Cherokee County Health Department)

110 E. Walnut Street
Columbus, KS 66725

Fredonia

421 N. 7th
Fredonia, KS 66736
(620) 378-4455

Howard

110 E. Walnut
Columbus, KS 66725
(620) 429-3338/(800) 405-5323

Independence (Independence Community College - West)

2615 West Main
Independence, KS 67301

Parsons

1500 S. 29th
Parsons, KS 67357
(620) 421-4790

Sedan

215 N. Chautauqua
Sedan, KS 67361
(620) 725-5850

Webb & Rodrick Chapel

306 W. Main
Independence, KS 67301
(620) 331-3900

Westar Energy**Coffeyville**

P.O. Box 1629
Coffeyville, KS 67337
(620) 252-6125/(800) 383-1183

Independence

1101 E. Main
Independence, KS 67301

Wilson County Attorney

615 Madison, Rm. 201
Fredonia, KS 66736
(620) 378-4115

Wilson County Court Services

615 Madison, Room 214
Fredonia, KS 66736
(620) 378-4435

Wilson County Extension Office

615 Madison, Room 101
Fredonia, KS 66736
(620) 378-2167

Wilson County Health Department

Altoona, KS 66710
(620) 374-2236
421 N. 7th St.
Fredonia, KS 66736
(620) 378-4455
425 Main St.
Neodesha, KS 66757

Wilson County Sheriff Department

925 Pierce
Fredonia, KS 66736
(620) 378-3622

Wilson County Hospital - Sanctuary

1527 Madison
Fredonia, KS 66736

Wilson Medical Center

2600 Ottawa Rd., P.O. Box 360
Neodesha, KS 66757
(620) 325-2611/(888) 286-6798

Windsor Place**Windsor Place**

2921 W. 1st St.
Coffeyville, KS 67337
(620) 251-5190

Windsor Place Assisted Living

2904 W. 8th
Coffeyville, KS 67337
(620) 251-0214

Windsor Place At-Home Care

201 N. Penn, Ste. 104
Independence, KS 67301
(620) 331-3388
106 Tyler
Coffeyville, KS 67337
(620) 251-1866

Winfield Public Library

605 College St.
Winfield, KS 67156
(620) 221-4470

Woodridge Estates

329 Kay Lane
Parsons, KS 67357
(620) 421-4700

V. Detail Exhibits

[VVV Consultants LLC]

a) Patient Origin Source Files

[VVV Consultants LLC]

Patient Origins 2019-2021

2019-2021 Trending IP Discharge Volumes

10/26/2022

Trended Market Share with Percentage

Page 1 of 1

INTELLIMED Market Share Profile System

KS RMC Restricted Data: Q16A-Q21D

Period: 2021 4th Quarter, 2021 3rd Quarter, 2021 2nd Quarter, 2021 1st Quarter; Facility: Coffeyville Regional Medical Center Elapsed: 00:00:03

Service Line MS-DRG	Volume			Percentage of Report Total and Sub-Total						Rate of Change	
	Cases			Cases Report Total			Cases Sub-Total			Volume	
	19D,19C,19B,19A	20D,20C,20B,20A	21D,21C,21B,21A	19D,19C,19B,19A	20D,20C,20B,20A	21D,21C,21B,21A	19D,19C,19B,19A	20D,20C,20B,20A	21D,21C,21B,21A	Period 2-1	Period 3-2
Pulmonary	195	216	234	12.42%	12.97%	15.83%	100.00%	100.00%	100.00%	21	18
Obstetrics - Delivery	212	241	227	13.50%	14.47%	15.36%	100.00%	100.00%	100.00%	29	-14
Normal Newborns	99	138	152	6.31%	8.28%	10.28%	100.00%	100.00%	100.00%	39	14
Cardiology	140	133	127	8.92%	7.98%	8.59%	100.00%	100.00%	100.00%	-7	-6
Orthopedics	147	194	114	9.36%	11.64%	7.71%	100.00%	100.00%	100.00%	47	-80
Neonatology	134	107	79	8.54%	6.42%	5.35%	100.00%	100.00%	100.00%	-27	-28
Gastroenterology	90	83	71	5.73%	4.98%	4.80%	100.00%	100.00%	100.00%	-7	-12
Infectious Disease	79	92	61	5.03%	5.52%	4.13%	100.00%	100.00%	100.00%	13	-31
Nephrology	67	77	61	4.27%	4.62%	4.13%	100.00%	100.00%	100.00%	10	-16
Endocrinology	68	65	58	4.33%	3.90%	3.92%	100.00%	100.00%	100.00%	-3	-7
General Medicine	58	41	53	3.69%	2.46%	3.59%	100.00%	100.00%	100.00%	-17	12
General Surgery	76	55	52	4.84%	3.30%	3.52%	100.00%	100.00%	100.00%	-21	-3
Neurology	42	48	30	2.68%	2.88%	2.03%	100.00%	100.00%	100.00%	6	-18
Hematology	16	24	29	1.02%	1.44%	1.96%	100.00%	100.00%	100.00%	8	5
Hepatobiliary	30	37	24	1.91%	2.22%	1.62%	100.00%	100.00%	100.00%	7	-13
Gynecology	29	30	22	1.85%	1.80%	1.49%	100.00%	100.00%	100.00%	1	-8
Oncology	13	7	13	0.83%	0.42%	0.88%	100.00%	100.00%	100.00%	-6	6
Psychiatry	14	16	12	0.89%	0.96%	0.81%	100.00%	100.00%	100.00%	2	-4
Trauma	9	11	10	0.57%	0.66%	0.68%	100.00%	100.00%	100.00%	2	-1
Urology	4	12	10	0.25%	0.72%	0.68%	100.00%	100.00%	100.00%	8	-2
Obstetrics - Other	13	9	9	0.83%	0.54%	0.61%	100.00%	100.00%	100.00%	-4	0
Unrelated	3	3	7	0.19%	0.18%	0.47%	100.00%	100.00%	100.00%	0	4
Rheumatology	9	9	6	0.57%	0.54%	0.41%	100.00%	100.00%	100.00%	0	-3
Otolaryngology	5	4	4	0.32%	0.24%	0.27%	100.00%	100.00%	100.00%	-1	0
Plastic Surgery	0	0	4	0.00%	0.00%	0.27%	0.00%	0.00%	100.00%	0	4
Vascular	5	4	3	0.32%	0.24%	0.20%	100.00%	100.00%	100.00%	-1	-1
Dermatology	2	3	2	0.13%	0.18%	0.14%	100.00%	100.00%	100.00%	1	-1
Neurosurgery	3	6	2	0.19%	0.36%	0.14%	100.00%	100.00%	100.00%	3	-4
Dentistry	2	0	1	0.13%	0.00%	0.07%	100.00%	0.00%	100.00%	-2	1
Ungroupable	0	0	1	0.00%	0.00%	0.07%	0.00%	0.00%	100.00%	0	1
Burns	1	0	0	0.06%	0.00%	0.00%	100.00%	0.00%	0.00%	-1	0
Ophthalmology	2	0	0	0.13%	0.00%	0.00%	100.00%	0.00%	0.00%	-2	0
Rehabilitation	1	0	0	0.06%	0.00%	0.00%	100.00%	0.00%	0.00%	-1	0
Thoracic Surgery	2	1	0	0.13%	0.06%	0.00%	100.00%	100.00%	0.00%	-1	-1
Report Total	1,570	1,666	1,478	100.00%	100.00%	100.00%	100.00%	100.00%	100.00%	96	-188

Version 9.943, Copyright © Intellimed International, Corp., 2022, All Rights Reserved.

Patient Origins 2019-2021 (Con't)

2019-2021 Trending IP Discharges Zip Code

10/26/2022

Page 1 of 5

Trended Market Share with Percentage

INTELLIMED Market Share Profile System

KS RMC Restricted Data: Q16A-Q21D

Period: 2021 4th Quarter, 2021 3rd Quarter, 2021 2nd Quarter, 2021 1st Quarter; Facility: Coffeyville Regional Medical Center Elapsed: 00:00:03

Zip Code	Volume			Percentage of Report Total and Sub-Total									Rate of Change	
	Cases			Cases Report Total			Cases Sub-Total			Volume			Period 2-1	
	19D,19C,19B,19A	20D,20C,20B,20A	21D,21C,21B,21A	19D,19C,19B,19A	20D,20C,20B,20A	21D,21C,21B,21A	19D,19C,19B,19A	20D,20C,20B,20A	21D,21C,21B,21A	19D,19C,19B,19A	20D,20C,20B,20A	21D,21C,21B,21A	Period 2-1	Period 3-2
67337 Coffeyville	971	945	846	61.85%	56.72%	57.24%	100.00%	100.00%	100.00%	-26	-99			
67301 Independence	207	235	220	13.18%	14.11%	14.88%	100.00%	100.00%	100.00%	28	-15			
74072 S Coffeyville	78	79	63	4.97%	4.74%	4.26%	100.00%	100.00%	100.00%	1	-16			
67333 Caney	55	55	53	3.50%	3.30%	3.59%	100.00%	100.00%	100.00%	0	-2			
67335 Cherryvale	36	33	38	2.29%	1.98%	2.57%	100.00%	100.00%	100.00%	-3	5			
66757 Neodesha	3	21	22	0.19%	1.26%	1.49%	100.00%	100.00%	100.00%	18	1			
67351 Liberty	18	24	18	1.15%	1.44%	1.22%	100.00%	100.00%	100.00%	6	-6			
67342 Edna	17	30	14	1.08%	1.80%	0.95%	100.00%	100.00%	100.00%	13	-16			
67361 Sedan	8	19	14	0.51%	1.14%	0.95%	100.00%	100.00%	100.00%	11	-5			
74042 Lenapah	8	7	11	0.51%	0.42%	0.74%	100.00%	100.00%	100.00%	-1	4			
74083 Wann	17	18	11	1.08%	1.08%	0.74%	100.00%	100.00%	100.00%	1	-7			
67340 Dearing	22	26	10	1.40%	1.56%	0.68%	100.00%	100.00%	100.00%	4	-16			
67347 Havana	4	8	9	0.25%	0.48%	0.61%	100.00%	100.00%	100.00%	4	1			
67357 Parsons	8	8	9	0.51%	0.48%	0.61%	100.00%	100.00%	100.00%	0	1			
66720 Chanute	0	2	8	0.00%	0.12%	0.54%	0.00%	100.00%	100.00%	2	6			
67330 Altamont	5	3	8	0.32%	0.18%	0.54%	100.00%	100.00%	100.00%	-2	5			
67352 Longton	8	1	8	0.51%	0.06%	0.54%	100.00%	100.00%	100.00%	-7	7			
67360 Peru	12	4	7	0.76%	0.24%	0.47%	100.00%	100.00%	100.00%	-8	3			
67364 Tyro	8	17	7	0.51%	1.02%	0.47%	100.00%	100.00%	100.00%	9	-10			
66762 Pittsburg	2	0	6	0.13%	0.00%	0.41%	100.00%	0.00%	100.00%	-2	6			
74048 Nowata	4	9	6	0.25%	0.54%	0.41%	100.00%	100.00%	100.00%	5	-3			
66736 Fredonia	2	6	5	0.13%	0.36%	0.34%	100.00%	100.00%	100.00%	4	-1			
67336 Chetopa	2	2	4	0.13%	0.12%	0.27%	100.00%	100.00%	100.00%	0	2			
67344 Elk City	5	13	4	0.32%	0.78%	0.27%	100.00%	100.00%	100.00%	8	-9			
67354 Mound Valley	2	8	4	0.13%	0.48%	0.27%	100.00%	100.00%	100.00%	6	-4			
67355 Niotaze	6	6	4	0.38%	0.36%	0.27%	100.00%	100.00%	100.00%	0	-2			
74344 Grove	0	0	4	0.00%	0.00%	0.27%	0.00%	0.00%	100.00%	0	4			
67207 Wichita	1	0	3	0.06%	0.00%	0.20%	100.00%	0.00%	100.00%	-1	3			
74006 Bartlesville	1	4	3	0.06%	0.24%	0.20%	100.00%	100.00%	100.00%	3	-1			
66040 La Cygne	0	0	2	0.00%	0.00%	0.14%	0.00%	0.00%	100.00%	0	2			
66777 Toronto	0	0	2	0.00%	0.00%	0.14%	0.00%	0.00%	100.00%	0	2			
67005 Arkansas City	1	2	2	0.06%	0.12%	0.14%	100.00%	100.00%	100.00%	1	0			
67074 Leon	0	0	2	0.00%	0.00%	0.14%	0.00%	0.00%	100.00%	0	2			
67334 Chautauqua	0	0	2	0.00%	0.00%	0.14%	0.00%	0.00%	100.00%	0	2			
74027 Delaware	5	2	2	0.32%	0.12%	0.14%	100.00%	100.00%	100.00%	-3	0			

Version 9.943, Copyright © Intellimed International, Corp., 2022, All Rights Reserved.

b) Town Hall Attendees, Notes, & Feedback

[VVV Consultants LLC]

Montgomery Co KS 2022 CHNA Town Hall THURS 8/11/22 (11:30am-1pm)

#	Table	Lead	Attend	Last	First	Organization	Title
1	B		x	Augustine	Amanda	Asbury Village	RN/Residence Director
2	A	##	x	Coffman	Monte	Health Management of Kansas, Inc	Executive Director
3	E		x	Denny	Steve	Four County	Deputy Dir
4	D	##	x	Mitchell	Chris	Home Sweet Home Min	Admin
5	B	##	x	Muller	Carolyn	Montgomery Co Health Department	
6	A		x	Shaw	Kristin	Women's Health (Independence)	Clinic Manager
7	A		x	Sandusky	Janet	Asbury Village	CSA
8	C	##	x	Summer	Melissa	CRMC	Marketing VP
9	C		x	Brown	Gina	Montgomery Co Health Department	

Coffeyville (KS) Town Hall Event Notes

Attendance: N=11

Date: 8/11/2022 – 11:30 a.m. to 1 p.m.

Community identified the following drugs (substance abuse) occurring in Coffeyville, KS: Meth, Marijuana, Fentanyl.

Notes:

- Infants up to 24 months that received full immunizations (20.3%) is possibly being reported incorrectly.
- Alcohol abuse and Drug abuse are separate.
- College was donated 1 million dollars for new wellness center.
- Social Media and teen mental health.

Strengths-

- | | |
|---|---|
| - Prevention services of drugs and alcohol | - Having Specialty Providers |
| - School Health | - Veteran Support |
| - Access to a local hospital with an ER service | - Available provisions for homeless and in need of food |
| - Access to Outdoor Activities | - Community Collaboration |
| - Population Density | - Education |

Needs-

- | | |
|--|--|
| - Housing (Available / Affordable / Safe) | - Mental Health Stigma Preventing Service |
| - Collaboration of Healthcare Delivery | - Drug Abuse |
| - Childcare (Affordable / Choices / Available) | - Chronic Disease |
| - Obesity | - Visiting Specs (IM, Peds, Derm, OBG, Psych (IN)) |
| - Tobacco (Smoking, Vaping) | - Poverty / Lack of Income |
| - Uninsured / Underinsured | - Domestic Violence (Shelter) |
| | - Suicide |

Wave #4 CHNA - Montgomery Co KS

Town Hall Conversation - Strengths (White Cards) N=11

Card #	What are the strengths of our community that contribute to health?	Card #	What are the strengths of our community that contribute to health?
1	Regional Med Center Available	5	Hospital and Specialist in Montgomery CO.
1	Emergency Care/ EMS Available	5	Population Desinty
1	Hospital branding/ Name	5	Veteran Support
1	Visiting specialists available	5	Good mental health service
1	Connections between community organization	6	Hospital in MG county with specialists
2	Vaccinations- more doc. Offices giving vaccines	6	Wellness Center Donation to CCC
2	Mental Health- Montgomery CO. has for county	6	Community Colleges in MG County
2	STI- HO works closely with KOHE to central outbreaks	6	School Health
2	Lead- Getting more attention	7	Population Desinty
2	Child Care- Unsure through state and regular survey	7	Stay/Robust MH services
3	Resources, Donations, Volunteers	7	Primary Care Access
3	Programs for health and wellness	7	ER Coverage
3	Prevention	7	School Nursing- HC services in school
3	Power of coalitions	7	Veteran Support
3	Drug and Alcohol rehab	8	Good hospital- schools
3	Knowledge, information collaborations	9	Access to healthcare (clinics and ER)
3	Provisions for Homeless	9	Specialty providers in our area
3	School Health	9	School health (free dental, eye, hearing, screenings)
3	Access to a hospital with ER	9	Hospitals
3	Outdoor Activity	9	Education
4	Access to quality healthcare/ hospital	10	Emergency services availability
4	The number of specialties	10	School health
4	Access to outdoor activities/ fitness	10	Good local community mental health center
4	School Health	10	Good local county health department
4	ER only hospital in region to staff	11	School health
4	Emergency Medical Physicians	11	Ambulance service/ Hospital
5	Safe Housing	11	Exercise facilities (multiple choices)
5	School Health	11	Education-preschool- through college
5	Access to care	11	Churches (multiple choices)

Wave #4 CHNA - Montgomery Co KS			
Town Hall Conversation - Weaknesses (Color Cards) N=11			
Card #	What are the weaknesses of our community that contribute to health?	Card #	What are the weaknesses of our community that contribute to health?
1	IM, Peds, more providers	6	Safe/healthy social media-> teen suicide
1	Chronical disease education/ mngt.	6	Inpatient mental health services
1	More collaboration between healthcare entities for the betterment of all.	6	Domestic violence shelter-support
1	Poverty	6	Poverty-Health Insurance
1	Uninsured	7	DO/MD in MG county- POD, Derm, LTC doctor(s)
2	Meth/ drugs epidemic(mental health, police)	7	Mental Health- depression/suicide
2	Unpaid care at hospital	7	Obesity/ exercise opportunity/education
2	Mental Health services	7	Drugs
2	Physicans living locally	7	STIs
2	Less government sponsered care	7	Housing-affordable and safe
3	Housing	8	Physicans, family practitioner/several practice
3	Prevention youth use of tobacco, alcohol, drugs	8	Housing
3	Under or uninsured	9	Poverty level
3	Suicide/Depression	9	Need doctors to live in Coffeyville/ more specialists
3	Poverty, lack of housing (safe and affordable)	9	Bring in more people to live in Coffeyville
4	Need more daycares	9	Chronic Disease/Mental Health awarness/education/help
4	Lead-too much lead issues in Mont. CO	9	Income rate per household
4	STI- need more education out there	10	Child care
4	Vaccinations-parent hesitation	10	Drug/ alcohol abuse
4	Mental Health- Lack of in patient to help people	10	Maternal/ infant health (strength with 1st trimester)
5	Mental Health Access (depression)	10	No health insurance
5	Housing affordable/ acceptable	10	Suicide Rate
5	Education/nurtrition excercise acess	11	Poverty redaction-economic improvement
5	Suicide Social Media	11	Insurance coverage
6	Tobacco use	11	Health literacy and education
6	Safe housing	11	Stigma or perception of mental health support
6	Teen pregnancy	11	Teen pregnancy
6	Substance use-meth, alcohol, opioids	11	Awarness of mental health and health (local) department services

EMAIL #1 Request Message (Cut & Paste)

From: Melissa Summer

Date: 6/24/2022

To: Community Leaders, Providers and Hospital Board and Staff

Subject: 2022 Republic County Community Health Needs Assessment

Coffeyville Regional Medical Center (CRMC) is working with other community health providers to update the 2022 Montgomery County, KS Community Health Needs Assessment. The goal of this assessment update is to understand progress in addressing health needs cited in the 2016 and 2019 CHNA reports and to collect up-to-date community health perceptions.

VVV Consultants LLC, an independent healthcare consulting firm from Olathe, KS, has been retained to conduct this countywide research. All responses will be confidential if you choose to participate in this online survey.

To gather community feedback, a short and confidential online survey has been developed. To access this survey, please utilize the link below to participate. The survey will close July 22nd, 2022.

LINK:

<https://www.surveymonkey.com/r/CoffeyvilleCo>



All community residents and business leaders are encouraged to complete the 2022 CHNA online survey by **July 22nd, 2022**. In addition, please **HOLD the date** for the Town Hall meeting scheduled **Thursday, August 11th, 2022**, for lunch from **11:30 a.m. - 1:00 p.m.** in the **4th Floor Conference Room**. Please stay on the lookout for more information to come soon. Thank you in advance for your time and support!

If you have any questions regarding CHNA activities, please call Melissa at (620) 252-2214

PR#1 News Release

Local Contact: Melissa Summer

Media Release: 6/24/22

Coffeyville Regional Medical Center Conducts Community Health Needs Assessment

Over the next few months, **Coffeyville Regional Medical Center (CRMC)** will be working with area providers to update the Montgomery County Community Health Needs Assessment (CHNA) for 2022. We strive to seek input from the community members regarding the healthcare needs in order to complete the 2022 Community Health Needs Assessment update from 2019.

VVV Consultants LLC, an independent research firm from Olathe, KS has been retained to conduct this countywide research. The goal of this assessment update is to understand progress in addressing community health needs cited in the both the 2016 and 2019 assessment reports, while collecting up-to-date community health perceptions and ideas.

A brief community survey has been developed in order to accomplish this work. The survey can be accessed by visiting the hospitals' website, their Facebook page or scanning the QR code below. All community residents and business leaders are encouraged to complete the 2022 CHNA online survey by **July 22nd, 2022**.

In addition, please **HOLD the date** for the Town Hall meeting scheduled **Thursday, August 11th, 2022** for lunch from **11:30 a.m. - 1:00 p.m** in the **4th Floor Conference Room**. Please, stay on the lookout for more information to come soon. Thank you in advance for your time and support!

If you have any questions regarding CHNA activities, please call Melissa @ (620) 252-2214



From: Melissa Summer

Date: 07/20/2022

To: Community Leaders, Providers, Hospital Board Members and Staff

Subject: CHNA 2022 Town Hall Event – Montgomery County, KS

Please join Coffeyville Medical Regional Center (CRMC) for a Town Hall meeting on Thursday August 11th, from 11:30 a.m. – 1:00 PM at CRMC (Conference Center-4th floor). The purpose of this meeting is to review key health indicators for Montgomery County and gather your feedback for our 2022 Community Health Needs Assessment (CHNA) programs.

Healthcare leaders, social service providers, community-based organizations, and county residents are all invited to this event – *please spread the word.*

To adequately prepare for this socially distanced gathering, we need your RSVP by August 11th. Please utilize the link below or scan the code below to complete your RSVP if you plan to attend this important event.



Scan me to RSVP!

Or click on link below.

RSVP Now: <https://www.surveymonkey.com/r/CoffeyvilleRSVP>

We hope you can find the time to attend this event on August 11th! Thank you for your time and participation!

If you have any questions regarding CHNA activities, please call (620) 252-2214

Join Coffeyville Regional Medical Center as They Host the 2022 CHNA Town Hall Event

Media Release: 07/20/22

Coffeyville Regional Medical Center will be hosting a Town Hall meeting for the 2022 Coffeyville Kansas Community Health Needs Assessment on **Thursday, August 11th from 11:30 a.m. to 1:00 p.m.** located in the **CRMC (Conference Center-4th Floor)**. During this meeting, we will review the community health indicators and gather feedback opinions on key community needs.

As we continue to focus is the safety of our community in conjunction with COVID guidelines, it is vital everyone planning to attend this event RSVPs to properly adhere to guidelines for this social distanced event. Please visit our hospital website and social media sites to obtain the link to complete your RSVP! We hope that you find the time to join us for this important event on August 11th. Thanks in advance for your time and support!



Scan me to RSVP!

If you have any questions about CHNA activities, please call (620) 252-2214

d.) Primary Research Detail

[VVV Consultants LLC]

CHNA 2022 Community Feedback: Coffeyville KS (N=89)

ID	Zip	Rating	Movement	c1	c2	c3	In your opinion, what are the root causes of "poor health" in our community?
1007	67337	Good	Not really changing much	DRUG			Drug abuse
1032	67337	Very Good	Increasing - moving up	AWARE			As I wrote before, the services are here for those willing to make the effort to use them.
1053	67337	Good	Not really changing much	POV			poverty
1063	67337	Very Good	Increasing - moving up	POV	EDUC		poverty/education below norm

CHNA 2022 Community Feedback: Coffeyville KS (N=89)

ID	Zip	Rating	Movement	c1	c2	c3	Covid-19 has impacted our communities. Do you have any worries and/or concerns regarding COVID-19 in relation to Community Health?
1081	67337	Good	Not really changing much	COVID	CORP		The world has grown weary to all the redundant and ridiculous precautions and cancel culture when the mortality rate is so low in regard to COVID. Time to move on.
1085	67337	Average	Not really changing much	COVID	EDU		Some people not Quarantining when they should and not taking things seriously
1052	67337	Good	Not really changing much	PREV	CORP	IFD	Unfortunately, community participation in disease transition prevention is abysmal. While I don't see this as an issue for covid-19, if their were ever another instance of a pandemic/endemic the disease would rapid spread and overwhelm healthcare assets.
1050	67337	Good	Not really changing much	RESO	PART	COMM	Coordination of community resources for this or the next pandemic
1056	67357	Average	Not really changing much	VACC			I don't beleive in anymore vaccines or boosters, especially for children.

CHNA 2022 Community Feedback: Coffeyville KS (N=89)

ID	Zip	Rating	Movement	c1	c2	c3	In the past 2 years, did you or someone you know receive healthcare services outside of our community?
1024	67337	Average	Decreasing - slipping downward	CARD	EMER		Cardiology and emergency services
1033		Good	Increasing - moving up	DERM	ORTHO		Dermatology, hand surgery
1055	67337	Good	Increasing - moving up	DERM			dermatology
1060	67337	Average	Decreasing - slipping downward	ENT			ENT Bartlesville, OK
1043	67333	Good	Not really changing much	FEM	SURG		Mammography and biopsy of breast, specialized surgery not offered in this area.
1003	67330	Good	Increasing - moving up	FP			general medicine
1049	67337	Good	Not really changing much	GAS			GI specialist
1010	67337	Very Good	Increasing - moving up	ORTH			Orthopedics
1088	67337	Good	Not really changing much	PEDS	PULM	CARD	Pediatric Pulmonology and Cardiology
1005	66757	Average	Decreasing - slipping downward	PRIM	EMER	OBG	Primary provider visit, ER visit, Birth, Prenatal care, labs
1068	74072	Good	Decreasing - slipping downward	PRIM			PCP at Nowata Indian Clinic
1084	67301	Very Good	Increasing - moving up	PRIM			Primary Care, Sleep study
1085	67337	Average	Not really changing much	PUL			Sleep Machine
1027	74083	Good	Increasing - moving up	RAD			Radiology Services
1045	67347	Very Good	Increasing - moving up	RHE			rheumatologist
1006	67337	Good	Not really changing much	SPEC			healthcare that wasn't achievable locally
1001	67301	Good	Not really changing much	VETS			VA in wichita
1052	67337	Good	Not really changing much	VETS			Service within the department of Veterans Affairs.

CHNA 2022 Community Feedback: Coffeyville KS (N=89)

ID	Zip	Rating	Movement	c1	c2	c3	Access to care is vital. Are there enough providers / staff available at the right times to care for you and our community?
1017	67337	Good	Increasing - moving up	BH	PEDS		takes days at time to get mental health help needed or placement. and need more ped care providers
1018		Good	Increasing - moving up	BH			Mental health takes days at times to get the help needed.
1049	67337	Good	Not really changing much	CLIN	HRS		Need more after hours care availability
1081	67337	Good	Not really changing much	DOCS	PEDS		Medical doctors and pediatricians beyond APRNs are needed.
1015	67337	Average	Decreasing - slipping downward	DOCS			More MD/DO on staff, not just seeing an APRN
1034	67337	Good	Increasing - moving up	DOCS			We need more Drs. APRNs are great, but they are not MDs.
1060	67337	Average	Decreasing - slipping downward	FP	SCH		Maybe 3 MD's in General Practice. Can't get an appt the day you are sick.
1003	67330	Good	Increasing - moving up	IM			Appears to be more APRN than internal medicine; hard to get into internal medicine vs. APRN
1024	67337	Average	Decreasing - slipping downward	OBG	SURG	URL	OB/GYN, General Surgery, urology.
1084	67301	Very Good	Increasing - moving up	PEDS	OBG	PRIM	We need pediatricians, new OB/GYNs and primary care.
1012	74072	Good	Decreasing - slipping downward	PEDS			Pediatrics. Had to go to Wichita.
1068	74072	Good	Decreasing - slipping downward	PEDS			I think Coffeyville should try to find another Pediatrician, so that parents have more of a choice in who provides care for their child(ren).
1063	67337	Very Good	Increasing - moving up	PRIM	SPEC		primary care is okay, need to travel for most specialties
1014	67337	Average	Increasing - moving up	PRIM			More primary care physicians
1007	67337	Good	Not really changing much	QUAL	OTHR		it seems to always change
1088	67337	Good	Not really changing much	SPEC			Specialists as previously mentioned
1050	67337	Good	Not really changing much	SURG	BH	EMER	50% Gen Surg call is a concern Mental Health lag time for urgent needs in ER OB/GYN options of providers for patients

CHNA 2022 Community Feedback: Coffeyville KS (N=89)

ID	Zip	Rating	Movement	c1	c2	c3	What "new" community health programs should be created to meet current community health needs?
1081	67337	Good	Not really changing much	ADM	MAN		I think this is a topic for stakeholders to discuss.
1053	67337	Good	Not really changing much	ALT	CHIR	PHY	A service that cover mind, body and spiritual that work together. i.e.- medical doctor, chiropractor, massage therapy, physical therapy, and herbal care all together working as a unit to help people in a rounded type service community.
1056	67357	Average	Not really changing much	ALT			body, mind, and spirit
1084	67301	Very Good	Increasing - moving up	BH	DRUG		Mental Health Substance Abuse
1030	67337	Very Good	Not really changing much	BH	DRUG	FINA	Mental Health Services including Drug and alcohol and Victims of abuse services. Financial education program for adults.
1017	67337	Good	Increasing - moving up	BH	PEDS	NEP	mental health and ped care, nephrology/ dialysis
1050	67337	Good	Not really changing much	BH	PREV	FIT	Access to Mental Health Wellness Center options that feel clean and safe with day care
1018		Good	Increasing - moving up	BH	PSY	NEP	Better Mental health and psych emergency, Nephrology, and ped.
1042	67337	Very Good	Not really changing much	BH	SPEC	PRIM	mental health programs, more specialty doctors as well as primary care providers.
1036	67337	Very Good	Not really changing much	BH	SPRT	EDUC	mental health is crisis and needs more programs available
1015	67337	Average	Decreasing - slipping downward	BH	SUIC		More mental health/suicide help
1024	67337	Average	Decreasing - slipping downward	BH			Mental Health
1048	67337	Very Good	Increasing - moving up	BH			Behavioral health
1063	67337	Very Good	Increasing - moving up	BH	PEDS	PSY	Housing for mentally ill, acute care for mentally ill for more than 72 hours, ped and adult psychiatrist , more alcohol and drug counselors
1067	67354	Very Good	Increasing - moving up	BH			Mental Health
1001	67301	Good	Not really changing much	BH			mental health
1071	67337	Good	Not really changing much	BH			Improve mental health tx
1005	66757	Average	Decreasing - slipping downward	CC	BH	DRUG	child care education, mental health services, substance abuse services
1078		Good	Not really changing much	DERM	PEDS		Dermatology pediatrician
1079	67337	Good	Not really changing much	DRUG	ALC		Drug and alcohol / withdraw programs. Community garden
1033		Good	Increasing - moving up	EDU	NUTR		Education on health and nutrition in the public schools.
1052	67337	Good	Not really changing much	EDU	SERV	SH	True sexual health education.
1003	67330	Good	Increasing - moving up	EDU			healthy education is always a need; however, community buy-in is difficult due to the high costs "excuse" of living and eating healthy
1077	74072	Very Good	Increasing - moving up	EDUC	POV		Better education to poor and low income people
1073	74072	Very Good	Increasing - moving up	EDUC			Health education
1070	67337	Good	Not really changing much	EDUC			health education
1072	67337	Good	Not really changing much	EDUC			Health education
1006	67337	Good	Not really changing much	FEM	PEDS	HRS	womens health care, pediatric health care providers, all day urgent care, community health/nutrition/exercise
1055	67337	Good	Increasing - moving up	FIT	NUTR		exercise and healthy eating. It's hard to purchase healthy/fresh foods in the area.
1049	67337	Good	Not really changing much	NUTR	FIT	PREV	wellness/exercise
1083	67337	Good	Increasing - moving up	OBES			weight loss programs
1020	67337	Very Good	Increasing - moving up	ORTH	CLIN		Bone clinics to catch compression fractures and help those at risk for osteoporosis a chance to change it early on
1085	67337	Average	Not really changing much	PREV	CORP		Health and wellness fairs
1088	67337	Good	Not really changing much	PREV	NUTR	EDUC	Preventative services; Nutritional Health/Education
1060	67337	Average	Decreasing - slipping downward	SCH	DOCS		More MD's. Get an appt the day you are sick and actually get treated with meds on first visit.
1045	67347	Very Good	Increasing - moving up	SCRE	OBES	SPRT	community health screenings for early detection of things like HTN, DM, OBESITY
1013	67337	Average	Not really changing much	SPRT	CORP	SCRE	Community health fairs. Offer free screening exams to help get people in the door.
1006	67337	Good	Not really changing much	SPRT	NUTR	FIT	womens health care, pediatric health care providers, all day urgent care, community health/nutrition/exercise
1041	67337	Good	Not really changing much	SUIC			more suicide prevent

Let Your Voice Be Heard!

In 2019, Coffeyville Regional Medical Center surveyed our community to assess health needs. Today, we request your input again in order to create a 2022 Montgomery County, KS Community Health Needs Assessment (CHNA).

To gather current area feedback, a short online survey has been created to evaluate current community health needs and delivery. Survey deadline has been extended to Wed, July 27, 2022.

While your participation is voluntary and confidential, all community input is valued. Thank you for your immediate attention!

1. In your opinion, how would you rate the "Overall Quality" of healthcare delivery in our community?

☐ Very Good ☐ Good ☐ Average ☐ Poor ☐ Very Poor

2. When considering "overall community health quality", is it ...

☐ Increasing - moving up ☐ Not really changing much ☐ Decreasing - slipping downward

Please specify why.

3. In your own words, what is the general perception of healthcare delivery for our community (i.e. hospitals, doctors, public health, etc.)? Be Specific.

4. In your opinion, are there healthcare services in our community/your neighborhood that you feel need to be improved, worked on and/or changed? (Be specific)

5. From our past CHNA, a number of health needs were identified as priorities. Are any of these an ongoing problem for our community? Please select all that apply.

- | | |
|---|--|
| <input type="checkbox"/> Affordable / Safe Housing | <input type="checkbox"/> Obesity (Nutrition / Exercise) - Access and Affordability |
| <input type="checkbox"/> Chronic Disease Management (Diabetes, Heart Disease, Hypertension, etc.) | <input type="checkbox"/> Poverty (Chronic) |
| <input type="checkbox"/> Drug Abuse (Opioids, Meth, Oxycodone, Marijuana, Cocaine) | <input type="checkbox"/> Primary Care Providers |
| <input type="checkbox"/> Economic Development (Seek Entrepreneurs, Address Unemployment) | <input type="checkbox"/> Providers (IM, PC, Derm, Endo, Psych, Pod) |
| <input type="checkbox"/> Lack of County Communication (Coffeyville and to other county areas) | <input type="checkbox"/> Teen Pregnancy |
| <input type="checkbox"/> Lack of Individual Health Ownership (Apathy) | <input type="checkbox"/> Tobacco (Vaping, Chewing, Smoking) |
| <input type="checkbox"/> Lack of Parental / Family Skills (Education) | <input type="checkbox"/> Transportation |

6. Which past CHNA needs are NOW the "most pressing" for improvement? Please select top three.

- | | |
|---|--|
| <input type="checkbox"/> Affordable / Safe Housing | <input type="checkbox"/> Obesity (Nutrition / Exercise) - Access and Affordability |
| <input type="checkbox"/> Chronic Disease Management (Diabetes, Heart Disease, Hypertension, etc.) | <input type="checkbox"/> Poverty (Chronic) |
| <input type="checkbox"/> Drug Abuse (Opioids, Meth, Oxycodone, Marijuana, Cocaine) | <input type="checkbox"/> Primary Care Providers |
| <input type="checkbox"/> Economic Development (Seek Entrepreneurs, Address Unemployment) | <input type="checkbox"/> Providers (IM, PC, Derm, Endo, Psych, Pod) |
| <input type="checkbox"/> Lack of County Communication (Coffeyville and to other County areas) | <input type="checkbox"/> Teen Pregnancy |
| <input type="checkbox"/> Lack of Individual Health Ownership (Apathy) | <input type="checkbox"/> Tobacco (Vaping, Chewing, Smoking) |
| <input type="checkbox"/> Lack of Parental / Family Skills (Education) | <input type="checkbox"/> Transportation |

7. In your opinion, what are the root causes of "poor health" in our community? Please select top three.

- ☐ Chronic Disease
- ☐ Lack of Health & Wellness
- ☐ Lack of Nutrition/Exercise Services
- ☐ Limited Access to Primary Care
- ☐ Limited Access Specialty Care
- ☐ Limited Access to Mental Health
- ☐ Family Assistance programs
- ☐ Lack of Health Insurance
- ☐ Neglect

Other (Be Specific).

8. How would our community area residents rate each of the following health services?

	Very Good	Good	Fair	Poor	Very Poor
Ambulance Services	<input type="radio"/>	<input type="radio"/>	<input type="radio"/>	<input type="radio"/>	<input type="radio"/>
Child Care	<input type="radio"/>	<input type="radio"/>	<input type="radio"/>	<input type="radio"/>	<input type="radio"/>
Chiropractors	<input type="radio"/>	<input type="radio"/>	<input type="radio"/>	<input type="radio"/>	<input type="radio"/>
Dentists	<input type="radio"/>	<input type="radio"/>	<input type="radio"/>	<input type="radio"/>	<input type="radio"/>
Emergency Room	<input type="radio"/>	<input type="radio"/>	<input type="radio"/>	<input type="radio"/>	<input type="radio"/>
Eye Doctor/Optometrst	<input type="radio"/>	<input type="radio"/>	<input type="radio"/>	<input type="radio"/>	<input type="radio"/>
Family Planning Services	<input type="radio"/>	<input type="radio"/>	<input type="radio"/>	<input type="radio"/>	<input type="radio"/>
Home Health	<input type="radio"/>	<input type="radio"/>	<input type="radio"/>	<input type="radio"/>	<input type="radio"/>
Hospice/Palliative	<input type="radio"/>	<input type="radio"/>	<input type="radio"/>	<input type="radio"/>	<input type="radio"/>
Telehealth	<input type="radio"/>	<input type="radio"/>	<input type="radio"/>	<input type="radio"/>	<input type="radio"/>

9. How would our community area residents rate each of the following health services?

	Very Good	Good	Fair	Poor	Very Poor
Inpatient Services	<input type="radio"/>	<input type="radio"/>	<input type="radio"/>	<input type="radio"/>	<input type="radio"/>
Mental Health Services	<input type="radio"/>	<input type="radio"/>	<input type="radio"/>	<input type="radio"/>	<input type="radio"/>
Nursing Home/Senior Living	<input type="radio"/>	<input type="radio"/>	<input type="radio"/>	<input type="radio"/>	<input type="radio"/>
Outpatient Services	<input type="radio"/>	<input type="radio"/>	<input type="radio"/>	<input type="radio"/>	<input type="radio"/>
Pharmacy	<input type="radio"/>	<input type="radio"/>	<input type="radio"/>	<input type="radio"/>	<input type="radio"/>
Primary Care	<input type="radio"/>	<input type="radio"/>	<input type="radio"/>	<input type="radio"/>	<input type="radio"/>
Public Health	<input type="radio"/>	<input type="radio"/>	<input type="radio"/>	<input type="radio"/>	<input type="radio"/>
School Health	<input type="radio"/>	<input type="radio"/>	<input type="radio"/>	<input type="radio"/>	<input type="radio"/>
Visiting Specialists	<input type="radio"/>	<input type="radio"/>	<input type="radio"/>	<input type="radio"/>	<input type="radio"/>

Other (please specify)

10. Community Health Readiness is vital. How would you rate each of the following?

	Very Good	Good	Fair	Poor	Very Poor
Behavioral/Mental Health	<input type="radio"/>	<input type="radio"/>	<input type="radio"/>	<input type="radio"/>	<input type="radio"/>
Emergency Preparedness	<input type="radio"/>	<input type="radio"/>	<input type="radio"/>	<input type="radio"/>	<input type="radio"/>
Food and Nutrition Services/Education	<input type="radio"/>	<input type="radio"/>	<input type="radio"/>	<input type="radio"/>	<input type="radio"/>
Health Screenings/Education	<input type="radio"/>	<input type="radio"/>	<input type="radio"/>	<input type="radio"/>	<input type="radio"/>
Prenatal/Child Health Programs	<input type="radio"/>	<input type="radio"/>	<input type="radio"/>	<input type="radio"/>	<input type="radio"/>
Substance Use/Prevention	<input type="radio"/>	<input type="radio"/>	<input type="radio"/>	<input type="radio"/>	<input type="radio"/>
Suicide Prevention	<input type="radio"/>	<input type="radio"/>	<input type="radio"/>	<input type="radio"/>	<input type="radio"/>
Violence/Abuse Prevention	<input type="radio"/>	<input type="radio"/>	<input type="radio"/>	<input type="radio"/>	<input type="radio"/>
Women's Wellness Programs	<input type="radio"/>	<input type="radio"/>	<input type="radio"/>	<input type="radio"/>	<input type="radio"/>

11. Do you have any Covid-19 worries and/or concerns in regards to Community Health delivery?

☐ Yes

☐ No

If yes, please specify your thoughts.

12. Over the past 2 years, did you or someone in your household receive healthcare services outside of our county?

☐ Yes

☐ No

If yes, please specify the services received

13. Access to care is vital. Are there enough providers/staff available at the right times to care for you and our community?

☐ Yes

☐ No

If NO, please specify what is needed where. Be specific.

14. What "new" community health programs should be created to meet current community health needs?

15. Are there any other health needs (listed below) that need to be discussed further at our upcoming CHNA Town Hall meeting? Please select all that apply.

- | | | |
|---|--|--|
| <input type="checkbox"/> Abuse/Violence | <input type="checkbox"/> Health Literacy | <input type="checkbox"/> Poverty |
| <input type="checkbox"/> Access to Health Education | <input type="checkbox"/> Heart Disease | <input type="checkbox"/> Preventative Health/Wellness |
| <input type="checkbox"/> Alcohol | <input type="checkbox"/> Housing | <input type="checkbox"/> Sexually Transmitted Diseases |
| <input type="checkbox"/> Alternative Medicine | <input type="checkbox"/> Lack of Providers/Qualified Staff | <input type="checkbox"/> Suicide |
| <input type="checkbox"/> Behavioral/Mental Health | <input type="checkbox"/> Lead Exposure | <input type="checkbox"/> Teen Pregnancy |
| <input type="checkbox"/> Breastfeeding Friendly Workplace | <input type="checkbox"/> Neglect | <input type="checkbox"/> Telehealth |
| <input type="checkbox"/> Cancer | <input type="checkbox"/> Nutrition | <input type="checkbox"/> Tobacco Use |
| <input type="checkbox"/> Care Coordination | <input type="checkbox"/> Obesity | <input type="checkbox"/> Transportation |
| <input type="checkbox"/> Diabetes | <input type="checkbox"/> Occupational Medicine | <input type="checkbox"/> Vaccinations |
| <input type="checkbox"/> Drugs/Substance Abuse | <input type="checkbox"/> Ozone (Air) | <input type="checkbox"/> Water Quality |
| <input type="checkbox"/> Family Planning | <input type="checkbox"/> Physical Exercise | |

Other (Please specify).

16. For reporting purposes, are you involved in or are you a....? Please select all that apply.

- | | | |
|--|--|--|
| <input type="checkbox"/> Business/Merchant | <input type="checkbox"/> EMS/Emergency | <input type="checkbox"/> Other Health Professional |
| <input type="checkbox"/> Community Board Member | <input type="checkbox"/> Farmer/Rancher | <input type="checkbox"/> Parent/Caregiver |
| <input type="checkbox"/> Case Manager/Discharge Planner | <input type="checkbox"/> Hospital/Health Dept. | <input type="checkbox"/> Pharmacy/Clinic |
| <input type="checkbox"/> Clergy | <input type="checkbox"/> Housing/Builder | <input type="checkbox"/> Media (Paper/TV/Radio) |
| <input type="checkbox"/> College/University | <input type="checkbox"/> Insurance | <input type="checkbox"/> Senior Care |
| <input type="checkbox"/> Consumer Advocate | <input type="checkbox"/> Labor | <input type="checkbox"/> Teacher/School Admin |
| <input type="checkbox"/> Dentist/Eye Doctor/Chiropractor | <input type="checkbox"/> Law Enforcement | <input type="checkbox"/> Veteran |
| <input type="checkbox"/> Elected Official - City/County | <input type="checkbox"/> Mental Health | |

Other (Please specify).

17. What is your home ZIP code? Please enter 5-digit ZIP code; for example 66544 or 65305



VVV Consultants LLC



VVV Consultants LLC

Vince Vandehaar, MBA

Principal & Adjunct Professor

VVV@VandehaarMarketing.com

Hannah Foster, MBA

Associate Consultant

HCF@VandehaarMarketing.com

Cassandra Kahl, BHS MHA

Director, Project Management

CJK@VandehaarMarketing.com

HQ Office:

601 N Mahaffie, Olathe, KS 66061

(913) 302-7264

<http://vandehaarmarketing.com>

VVV Consultants LLC is an Olathe, KS based “boutique” healthcare consulting firm specializing in Strategy; Research and Business Development services. We partner with clients. Plan the Work; Work the Plan